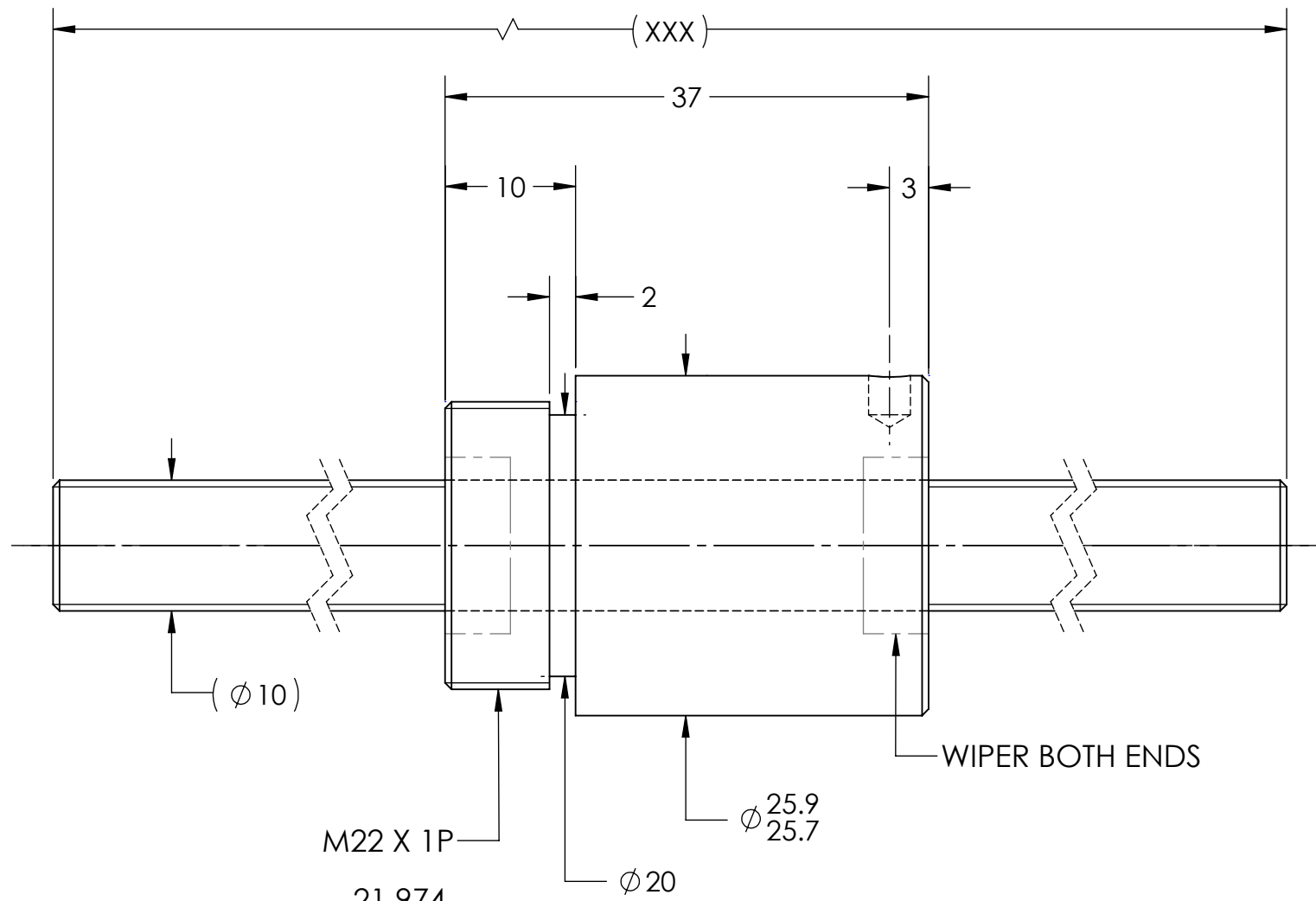
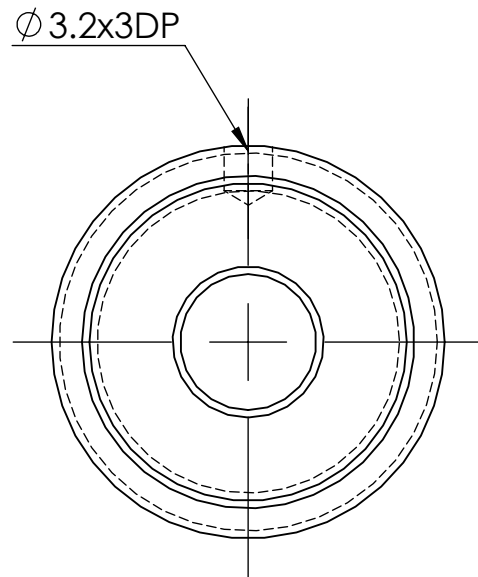


UNCONTROLLED IF PRINTED

$\sqrt{Ra6.3}$ ($\sqrt{Ra6.3}^G$)



M22 X 1P
 MD: 21.974
 21.794
 PD: 21.324
 21.206

BREAK SHARP EDGES UNLESS OTHERWISE SPECIFIED

PRELOAD(kgf)	~	ROUGH M/C	FIN M/C	GRD		MATERIAL	SHAFT:CF53/Equiv. NUT:SNM220/Equiv.			
R.D.	7.742	$\sqrt{Ra25}$	$\sqrt{Ra6.3}$	$\sqrt{Ra0.4}$		THREAD BALL TRACK	HRC 56~62			
S.F. (kgf)	~	TOLERANCE mm								
DRAG TRQ(kgf-cm)	~	UP	6	30	120	300	600	1200	2400	2400
TURN DIRECTION	R	TO	6	30	120	300	600	1200	2400	OVER
P.C. DIA.	10.2	± 0.1	± 0.2	± 0.3	± 0.4	± 0.5	± 0.8	± 1.0	± 1.5	
BALL DIA.	2.381	DATE		INITIALS	HIWIN CORPORATION 12455 Jim Dhamer Dr, Huntley, IL 60142					
BACKLASH	0.02 MAX	DRAWN	09/30/2022	D.W						
CIRCUIT	2.6*1	CHECKED	01/17/2023	T.C.						
LEAD ANGLE	7.12	MFG APPR.	01/17/2023	A.H	TITLE: STANDARD STOCK BALLSCREW					
DYNAMIC (kgf)	450	THREAD LENGTH			PART NUMBER: R10-4B1-RSZ-XXX-XXX-0.05					
STATIC (kgf)	790	v300p: 0.05			SIZE	DWG. NO.	REV	SCALE	NTS	
LEAD	4	B	W-SBS-10-4-A02	N/C						

HIWIN CONFIDENTIAL