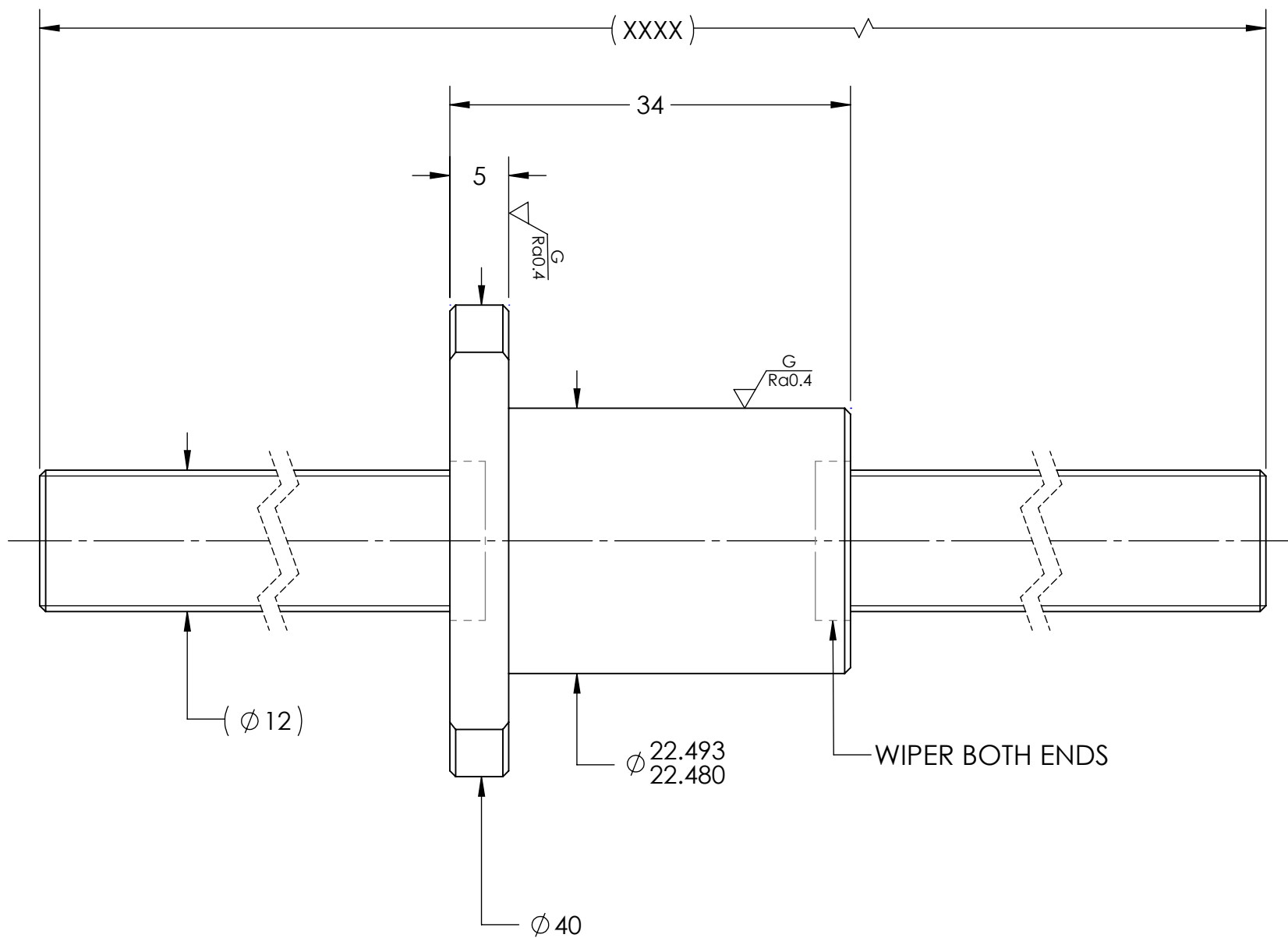
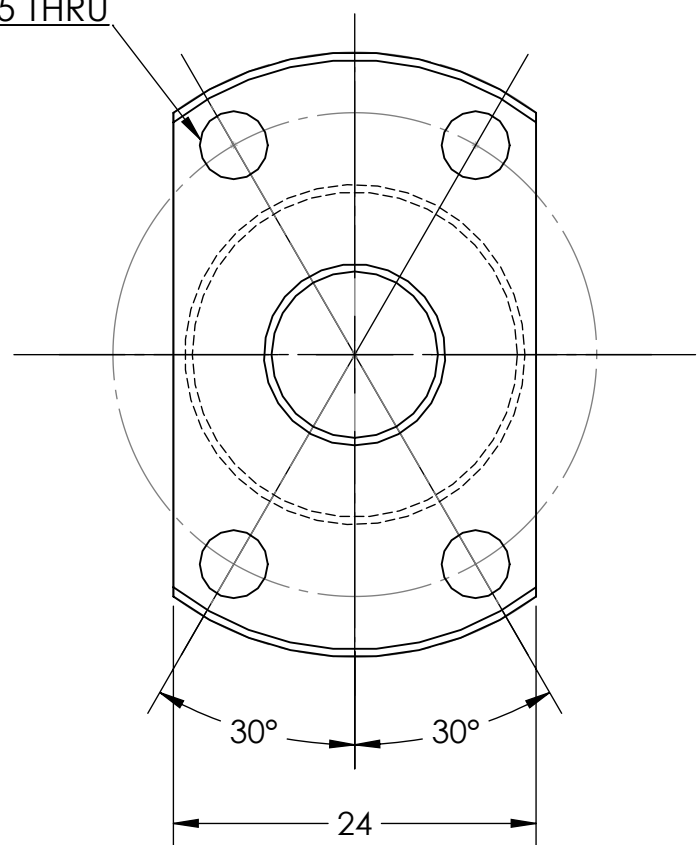


UNCONTROLLED IF PRINTED

$\sqrt{Ra0.4}$ ($\sqrt{Ra0.4}^G$)

4 - $\phi 4.5$ THRU
BCD 32



BREAK SHARP EDGES UNLESS OTHERWISE SPECIFIED

PRELOAD(kgf)	~
R.D.	9.792
S.F. (kgf)	~
DRAG TRQ(kgf-cm)	~
TURN DIRECTION	R
P.C. DIA.	12.25
BALL DIA.	2.381
BACKLASH	0.02 MAX
CIRCUIT	3.6*1
LEAD ANGLE	5.93
DYNAMIC (kgf)	680
STATIC (kgf)	1370
LEAD	4

ROUGH M/C	FIN M/C	GRD		MATERIAL	SHAFT:CF53/Equiv. NUT:SNM220/Equiv.			
$\sqrt{Ra25}$	$\sqrt{Ra6.3}$	$\sqrt{Ra0.4}$		THREAD BALL TRACK	HRC 56~62			
TOLERANCE mm								
UP TO	6	30	120	300	600	1200	2400	OVER
	± 0.1	± 0.2	± 0.3	± 0.4	± 0.5	± 0.8	± 1.0	± 1.5
DATE	INITIALS	HIWIN CORPORATION 12455 Jim Dhamer Dr, Huntley, IL 60142						
DRAWN	D.W							
CHECKED	T.C.							
MFG APPR.	A.H	TITLE: STANDARD STOCK BALLSCREW						
THREAD LENGTH		PART NUMBER: R12-4C1-FSZ-XXXX-XXXX-0.05						
v300p: 0.05		SIZE	DWG. NO.	REV	SCALE	NTS		
		B	W-SBS-12-4-A01	N/C				

HIWIN CONFIDENTIAL