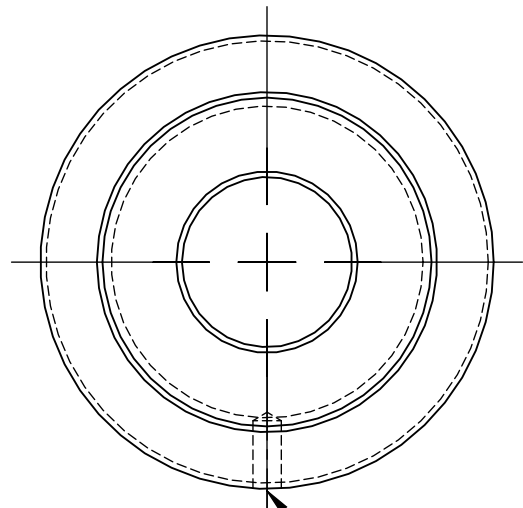
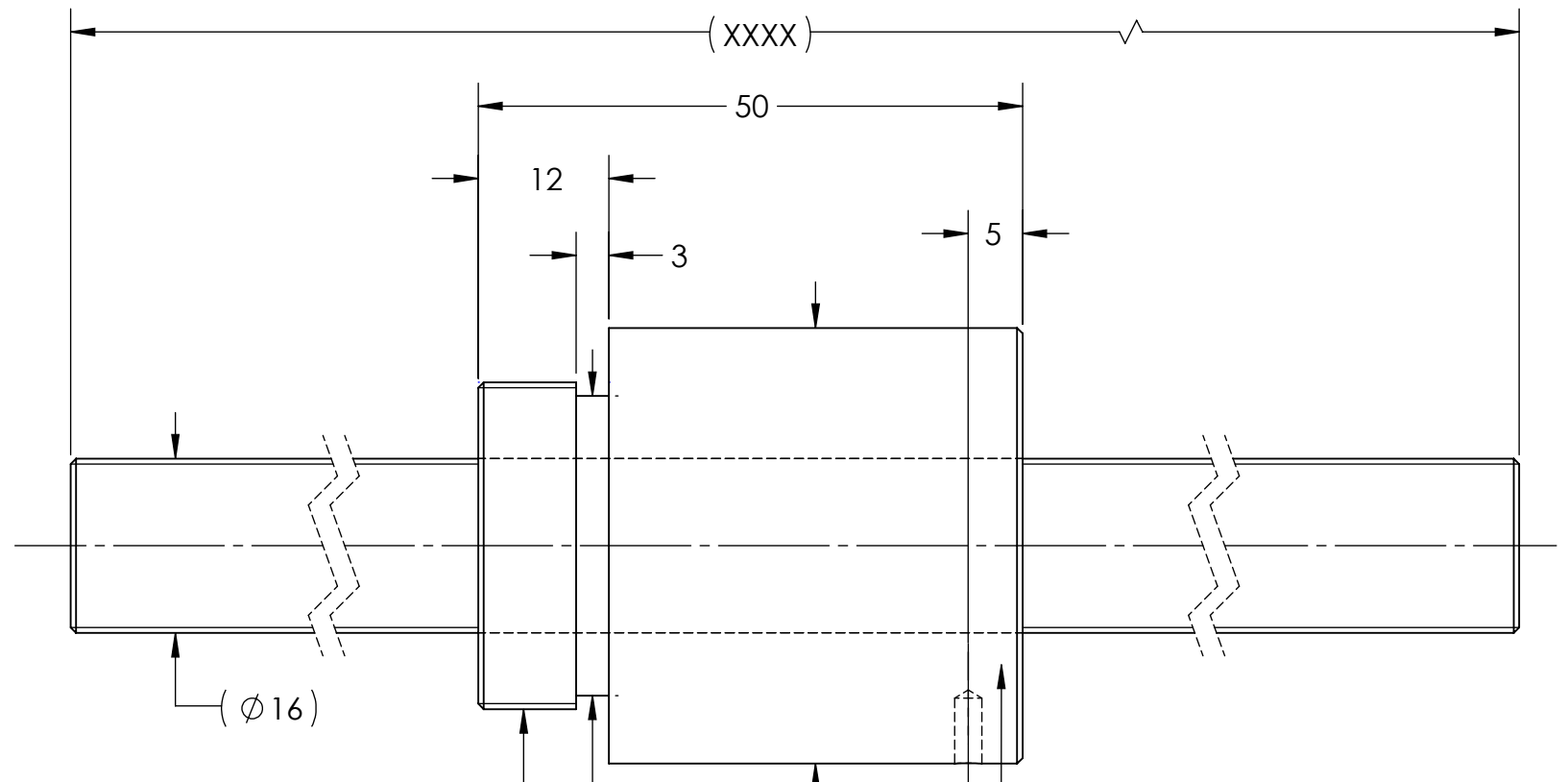


UNCONTROLLED IF PRINTED

Ra6.3 (Ra0.4)



M3x0.5Px3DP



M30 X 1.5P
 MD: 29.968
 MD: 29.732
 PD: 28.994
 PD: 28.844

WITHOUT WIPER BOTH ENDS

BREAK SHARP EDGES UNLESS OTHERWISE SPECIFIED

PRELOAD(kgf)	~
R.D.	13.344
S.F. (kgf)	~
DRAG TRQ(kgf-cm)	~
TURN DIRECTION	R
P.C. DIA.	16.62
BALL DIA.	3.175
BACKLASH	0.04 MAX
CIRCUIT	1.5*2
LEAD ANGLE	17.04
DYNAMIC (kgf)	703
STATIC (kgf)	1376
LEAD/PITCH	16/4

ROUGH M/C	FIN M/C	GRD	MATERIAL
$\sqrt{Ra25}$	$\sqrt{Ra6.3}$	$\sqrt{Ra0.4}$	SHAFT:CF53/Equiv. NUT:SNM220/Equiv.
THREAD BALL TRACK HRC 56~62			

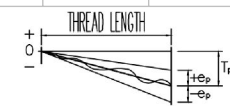
TOLERANCE mm									
UP	6	30	120	300	600	1200	2400	2400	OVER
TO	6	30	120	300	600	1200	2400	2400	OVER
TURN DIRECTION	± 0.1	± 0.2	± 0.3	± 0.4	± 0.5	± 0.8	± 1.0	± 1.5	

DATE: 07/14/2022 INITIALS: D.W. HIWIN CORPORATION 12455 Jim Dhamer Dr, Huntley, IL 60142
 CHECKED: 01/17/2023 T.C. Motion Control and System Technology

TITLE: STANDARD STOCK BALLSCREW

PART NUMBER: 4R16-16A2-DRSB-XXX-XXX-0.05

SIZE	DWG. NO.	REV	SCALE	NTS
B	W-SBS-16-16-A01	N/C		



HIWIN CONFIDENTIAL