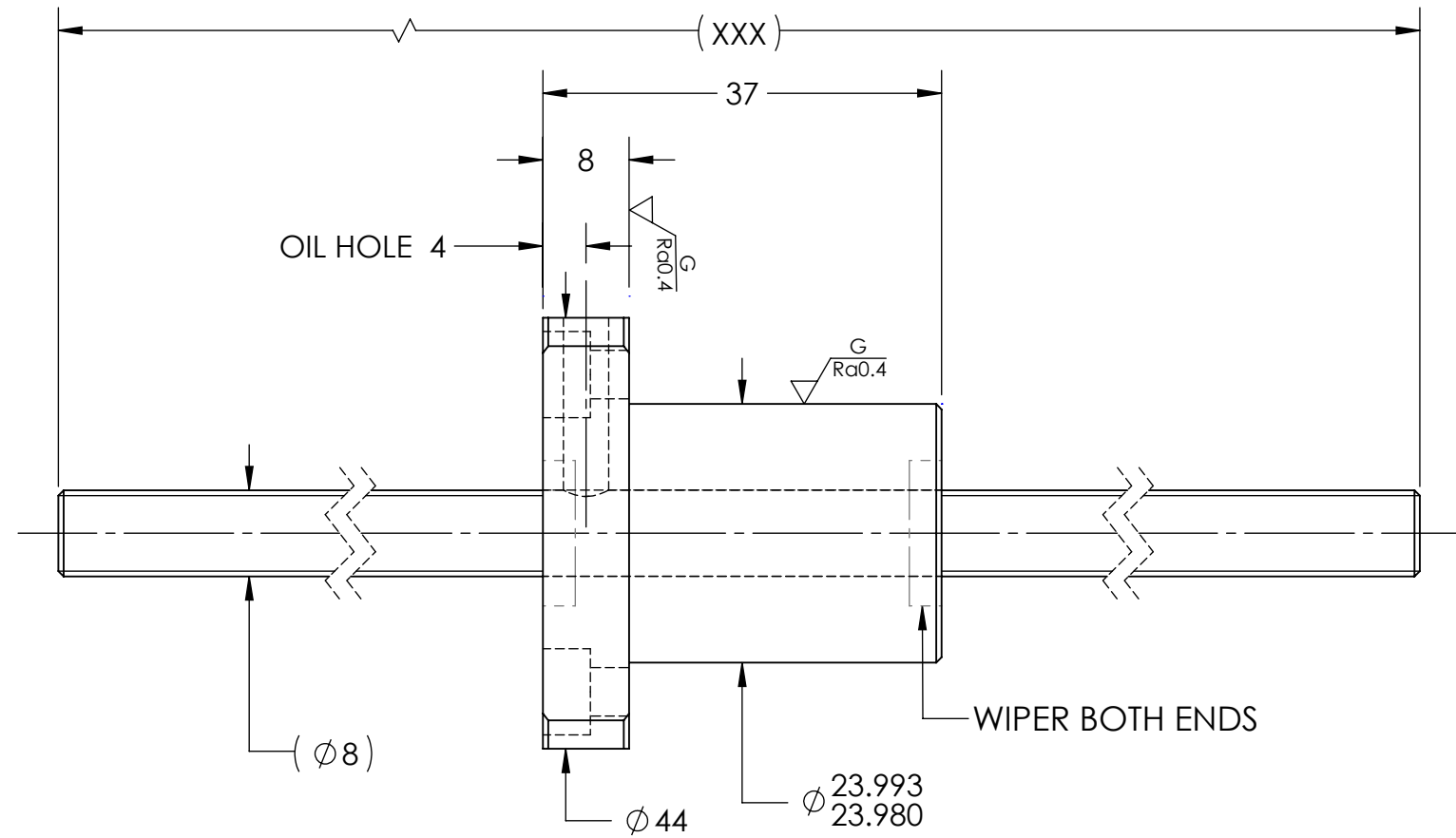
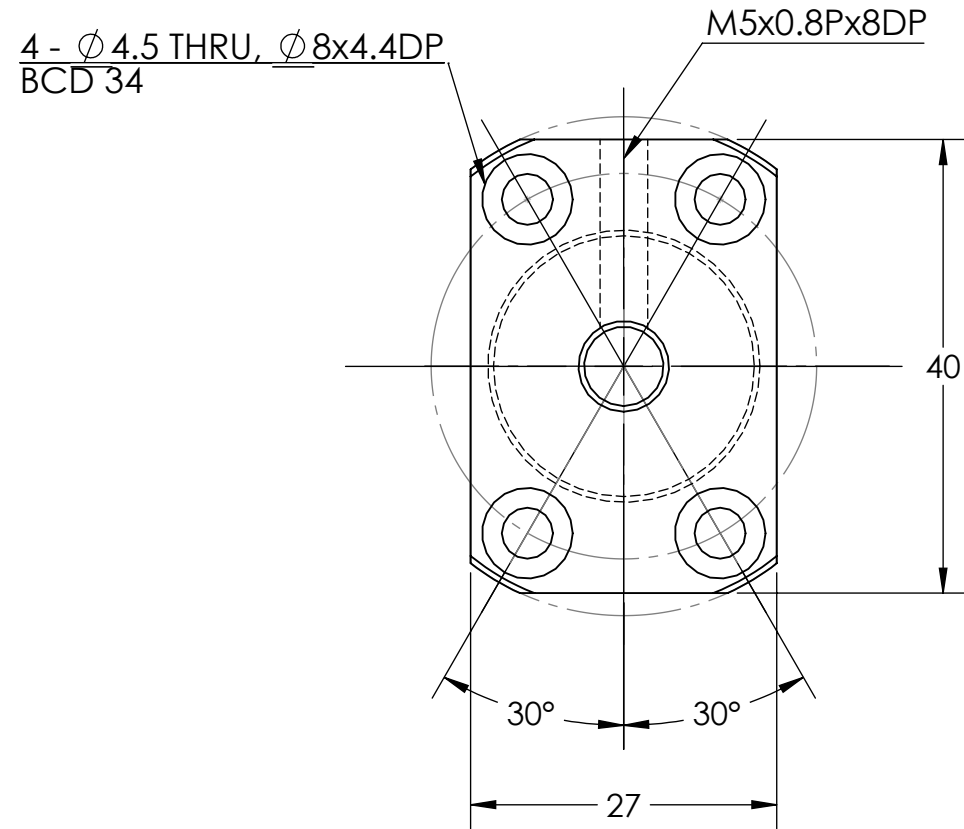


UNCONTROLLED IF PRINTED

$\sqrt{Ra6.3}$ ($\sqrt{G Ra0.4}$)

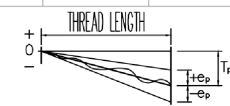


BREAK SHARP EDGES UNLESS OTHERWISE SPECIFIED

PRELOAD(kgf)	~
R.D.	6.156
S.F. (kgf)	~
DRAG TRQ(kgf-cm)	~
TURN DIRECTION	R
P.C. DIA.	8.22
BALL DIA.	2
BACKLASH	0.02 MAX
CIRCUIT	2.6*1
LEAD ANGLE	10.96
DYNAMIC (kgf)	320
STATIC (kgf)	540
LEAD	5

ROUGH M/C	FIN M/C	GRD	MATERIAL		SHAFT:CF53/Equiv. NUT:SNM220/Equiv.				
$\sqrt{Ra25}$	$\sqrt{Ra6.3}$	$\sqrt{Ra0.4}$	THREAD BALL TRACK		HRC 56~62				
TOLERANCE mm									
UP	6	30	120	300	600	1200	2400	2400	
TO	6	30	120	300	600	1200	2400	OVER	
TURN DIRECTION	± 0.1	± 0.2	± 0.3	± 0.4	± 0.5	± 0.8	± 1.0	± 1.5	
DATE	INITIALS	HIWIN CORPORATION 12455 Jim Dhamer Dr, Huntley, IL 60142							
DRAWN	D.W								
CHECKED	T.C.								
MFG APPR.	A.H								
TITLE:			STANDARD STOCK BALLSCREW						
PART NUMBER:			R8-5B1-FST-XXX-XXX-0.05						
SIZE	DWG. NO.	REV	SCALE	NTS					
B	W-SBS-8-5-A01	N/C							

HIWIN CONFIDENTIAL



v300p: 0.05