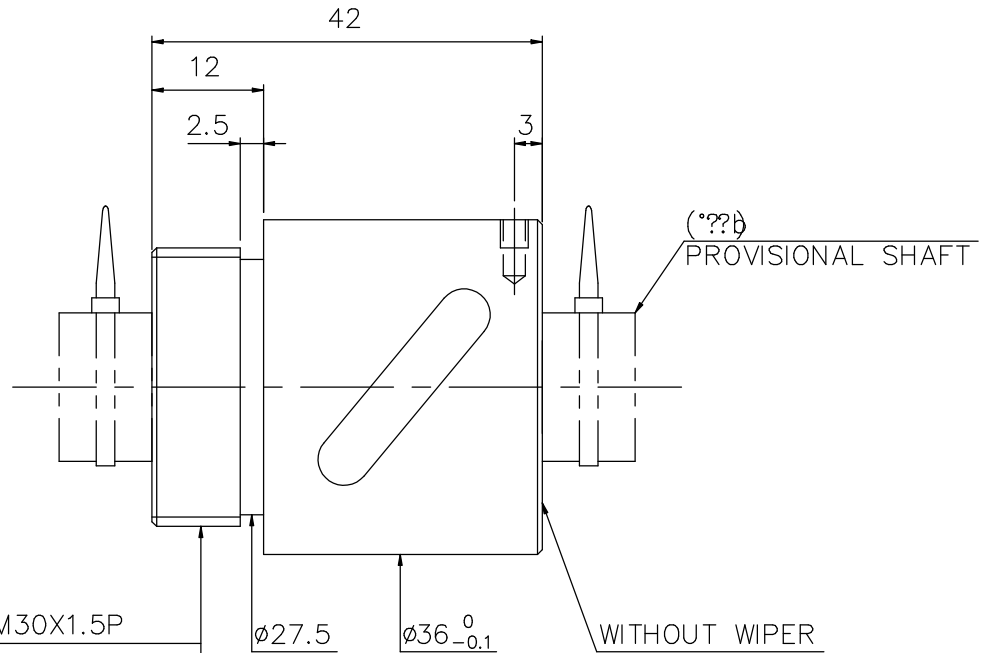
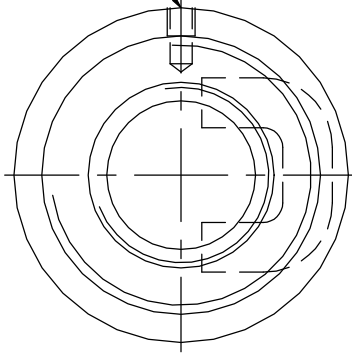


A10JJFA2

M3x0.5P x 3DP

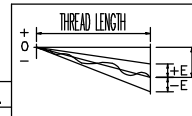
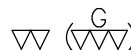


M30X1.5P
 MD30^{-0.032}_{-0.268}
 PD29.026^{-0.032}_{-0.182}

- 1. MAX AXIAL LOAD: _____ kgf
- 2. MAX BALLSCREW ROTATIONAL SPEED: _____ rpm
- DN VALUE: _____
- ACCELERATION = _____ m/sec²
- 3. MAX FEED RATE: _____ m/min

PRELOAD (kgf)	_____
R.D	_____
S.F (kgf)	_____
DRAG TORQUE (kgf-cm)	_____
LUBRICATION	_____
DIRECTION OF TURN	R.H
PC DIA.	16.175
BALL DIA.	3.175
BACKLASH	_____
CIRCUIT	2.5*1
LEAD ANGLE	5.62°
DYNAMIC (kgf)	(679)
STATIC (kgf)	(1226)
LEAD	5.

SPEC: R16-5B1-RSB



UNCHAMFERED USE	<input checked="" type="checkbox"/> R0.5	<input type="checkbox"/> R1	<input type="checkbox"/> R
ROUGH M/C FIN M/C	25°	6.3°	0.4°
UNTOL DIMN mm	UP TO 6	30	120
	300	600	1200
	2400	2400	2400
	±0.1	±0.2	±0.3
	±0.4	±0.5	±0.8
	±1.0	±1.5	

MATAL	NT: SNCM220	DATE	11.14.'01
THREAD BALL TRACK	HRC 58 ~ 62	DWG	?Q???
CUSTR		APPD	
DWG.NO.	A10JJFA2	PROCESS NO	G E

11.14.'01	MOD.	
DATE	MODIFICATION	APPROVED

* PLEASE IGNORE CHINESE CHARACTERS WHICH ARE FOR OUR REFERENCE ONLY.

*BREAK SHARP EDGE UNLESS OTHER SPECIFIED.	CUSTOMER DRAWING NO.
¥¼µe?E??¥HRO	5MAX
⊙ THREAD END ALLOWS ABOVE LENGTH OUT OF HARDNESS TOLERANCE	MC TYPE
	AXIAL TYPE

HIWIN® BALLSCREWS