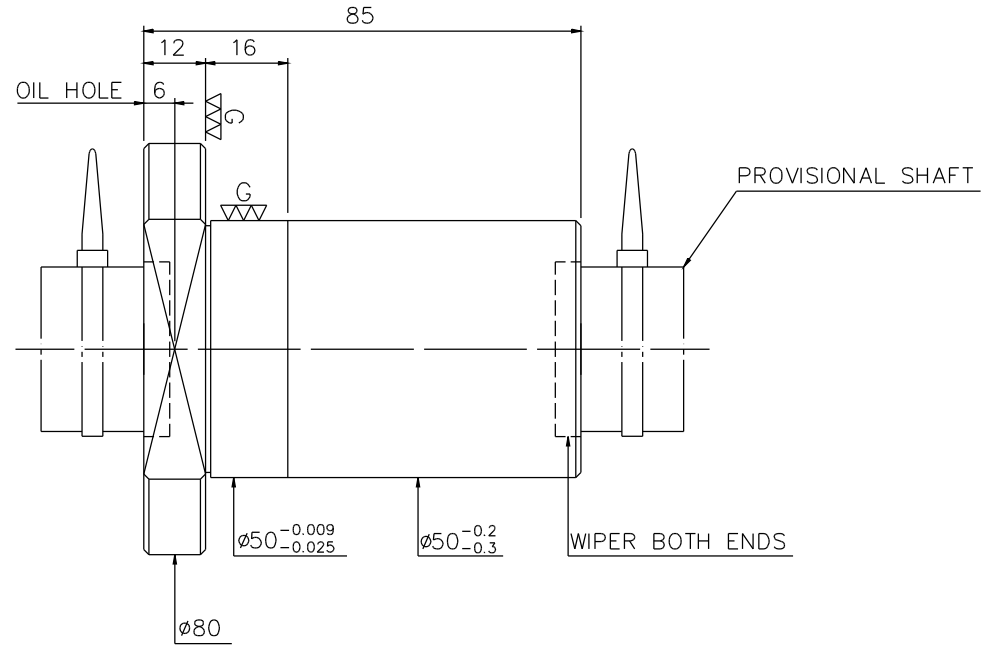
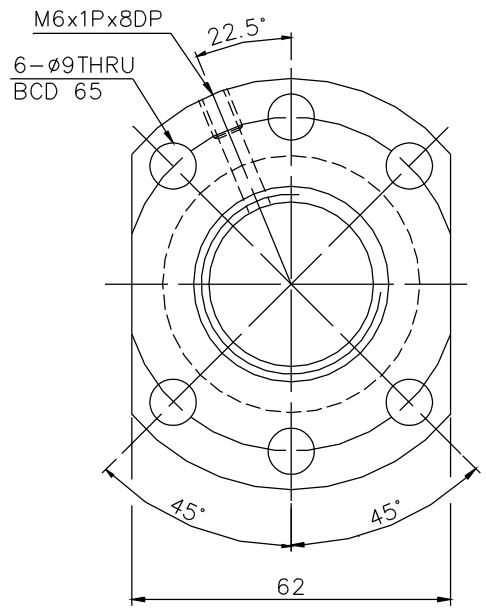


1
A10JK8A4

2
Released by HIWIN design group.

4
G
▽ (▽▽)



PRELOAD (kgf)	_____
R.D	_____
S.F (kgf)	_____
DRAG TORQUE (kgf-cm)	_____
DIRECTION OF TURN	R.H
PC DIA.	34.26
BALL DIA.	6.35

SPEC:R32-10T4-FSI

MAX. AXIAL LOAD (kgf)		LUBRICATION		SH: ROLLED	DATE	2007.05.25
MAX. ROTATIONAL SPEED (rpm)		SPACE BALL		NT: SNCM220/SCM415	DWG	KAI
DN VALUE		E1 TYPE ASSEMBLY METHOD		THREAD BALL TRACK	APPD	Lady
MAX. FEED RATE (m/min)		CUSTOMER DRAWING NO.		HRC 56 ~ 62	PROCESS NO.	G
ACCELERATION (m/sec ²)		CUSTOMER MIC TYPE				
SUPPORT METHOD		CUSTOMER AXIAL TYPE				
				LEAD		10

THREAD LENGTH	UNCHAMFERED USE <input type="checkbox"/> R0.5 <input checked="" type="checkbox"/> R1 <input type="checkbox"/> R	SCALE	MATAL	DATE
±E	ROUGH M/C FIN M/C GRD	1: X	SH: ROLLED	2007.05.25
±F	25 ₀ 6.3 ₀ 0.4 ₀	UNTOL DIMN mm	NT: SNCM220/SCM415	DWG
	UP TO 6 30 120 300 600 1200 2400	OVER 2400	THREAD BALL TRACK	APPD
	±0.1 ±0.2 ±0.3 ±0.4 ±0.5 ±0.8 ±1.0 ±1.5		HRC 56 ~ 62	PROCESS NO.
			CUSTR	
			DWG.NO.	A10JK8A4

*BREAK SHARP EDGE UNLESS OTHER SPECIFIED.
*?????RO.5MAX
● THREAD END ALLOWS ABOVE LENGTH OUT OF HARDNESS TOLERANCE

05.25'07	MOD. Δ~Δ	Lady
DATE	MODIFICATION	APPROVED

* PLEASE IGNORE CHINESE CHARACTERS WHICH ARE FOR OUR REFERENCE ONLY.

HIWIN BALLSCREWS