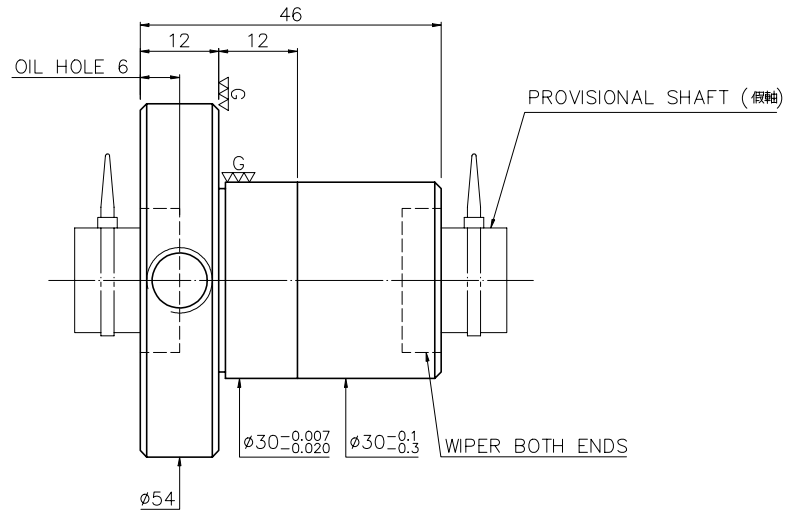
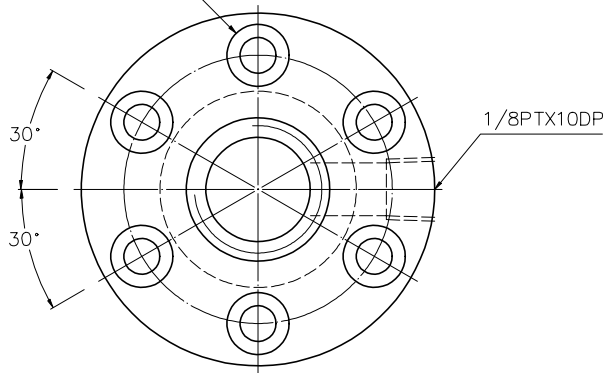


A10P5AA1

Released by HIWIN design group.

$\nabla \nabla \nabla$ ($\nabla \nabla \nabla$)

6- $\phi 5.5$ THRU $\phi 9.5 \times 5.5$ DP
BCD 41



PRELOAD(kgf)	~
R.D	12.924
S.F (kgf)	~
DRAG TORQUE(kgf-cm)	~
DIRECTION OF TURN	R
PC DIA.	16.2
BALL DIA.	3.175

SPEC: R16-5.08T3-FSI

MAX. AXIAL LOAD(kgf)	LUBRCATION	BALL DIA.	3.175
MAX. ROTATIONAL SPEED (rpm)	SPACE BALL	BACKLASH	~
DN VALUE	EI TYPE ASSEMBLY METHOD	CIRCUIT	3
MAX. FEED RATE (m/min)	CUSTOMER DRAWING NO.	LEAD ANGLE	5.7
ACCELERATION(m/sec ²)	CUSTOMER MC TYPE	DYNAMIC (kgf)	~
SUPPORT METHOD	CUSTOMER AXIAL TYPE	STATIC (kgf)	~
		LEAD	5.08

UNCHAMFERED USE <input type="checkbox"/> R0.5 <input checked="" type="checkbox"/> R1 <input type="checkbox"/> R	MATERIAL	SH: 50CrMo4	DATE	2003.04.09
ROUGH W/CLIN: M/C ∇ GRD. $\nabla \nabla \nabla$ SCALE	INT: SNCM220	DWG	張開圖	
UNTOL DIMN mm	THREAD BALL TRACK	APPD		
TYP 6 30 120 300 600 1200 2400 2400	HRC 58 ~ 62	PROCESS NO.	G	
± 0.1 ± 0.2 ± 0.3 ± 0.4 ± 0.5 ± 0.8 ± 1.0 ± 1.5	CUSTR			
HIWIN® BALLSCREWS	DWG.NO.	A10P5AA1		

*BREAK SHARP EDGE UNLESS OTHER SPECIFIED.
*未畫倒角者以R0.5MAX
● THREAD END ALLOWS ABOVE LENGTH OUT OF HARDNESS TOLERANCE

DATE	MODIFICATION	APPROVED

* PLEASE IGNORE CHINESE CHARACTERS WHICH ARE FOR OUR REFERENCE ONLY.