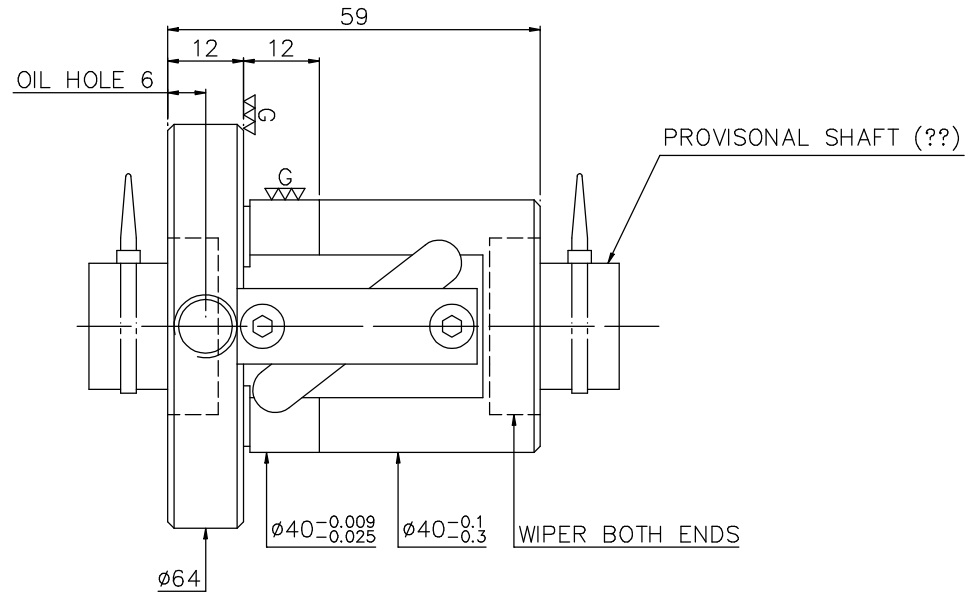
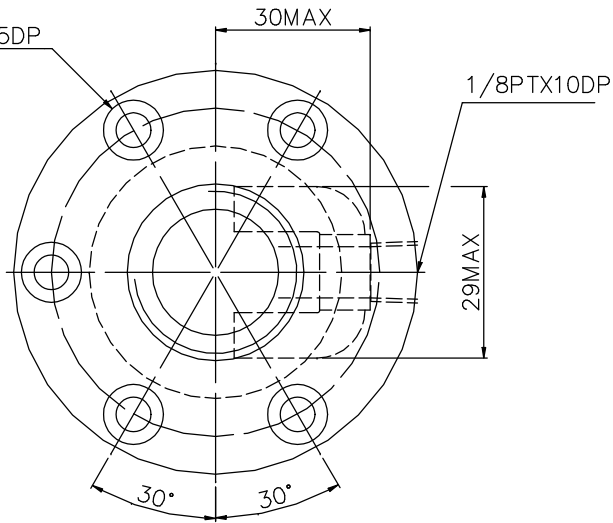


1
A10P5EA1

2
Released by HIWIN design group.

3
4
5
6
7
8
9
▽ (▽^G▽)

5- $\phi 5.5$ THRU $\phi 9.5 \times 5.5$ DP
BCD 52



PRELOAD (kgf)	~
R.D	15.982
S.F (kgf)	~
DRAG TORQUE (kgf-cm)	~
DIRECTION OF TURN	R
PC DIA.	20.85
BALL DIA.	4.763
BACKLASH	~
CIRCUIT	2.5*1
LEAD ANGLE	8.68
DYNAMIC (kgf)	~
STATIC (kgf)	~
LEAD	10

SPEC: R20-10B1-FSV

MAX. AXIAL LOAD (kgf)		LUBRCATION		SH: 50CrMo4	DATE	2003.04.10
MAX. ROTATIONAL SPEED (rpm)		SPACE BALL		NT: SNCM220	DWG	???
DN VALUE		EI TYPE ASSEMBLY METHOD		THREAD BALL TRACK	APPD	
MAX. FEED RATE (m/min)		CUSTOMER DRAWING NO.		HRC 58 ~ 62	PROCESS NO.	G
ACCELERATION (m/sec ²)		CUSTOMER MIC TYPE				
SUPPORT METHOD		CUSTOMER AXIAL TYPE				

THREAD LENGTH		LUNCHAMFERED USE <input type="checkbox"/> RO.5 <input checked="" type="checkbox"/> R1 <input type="checkbox"/> OR		SCALE		MATAL		SH: 50CrMo4		DATE		2003.04.10	
+T 0 -T		ROUGH M/C FIN M/C GRD		1: X				NT: SNCM220		DWG		???	
T:~ E:~		250 6.30 0.40		UNTOL DIMN mm				THREAD BALL TRACK		APPD			
e300:~ e:~		▽		UP TO 6 30 120 300 600 1200 2400 2400				HRC 58 ~ 62		PROCESS NO.		G	
		±0.1 ±0.2 ±0.3 ±0.4 ±0.5 ±0.8 ±1.0 ±1.5						CUSTR		DWG.NO.		A10P5EA1	

*BREAK SHARP EDGE UNLESS OTHER SPECIFIED.
*??????RO.5MAX
● THREAD END ALLOWS ABOVE LENGTH OUT OF HARDNESS TOLERANCE

DATE	MODIFICATION	APPROVED
------	--------------	----------

* PLEASE IGNORE CHINESE CHARACTERS WHICH ARE FOR OUR REFERENCE ONLY.

HIWIN BALLSCREWS