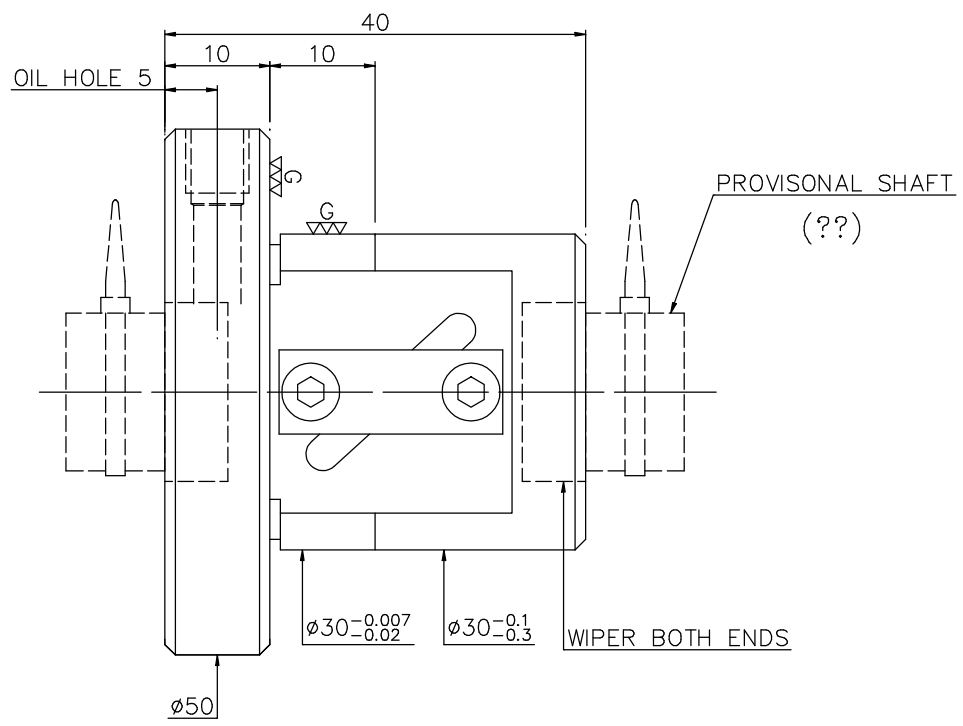
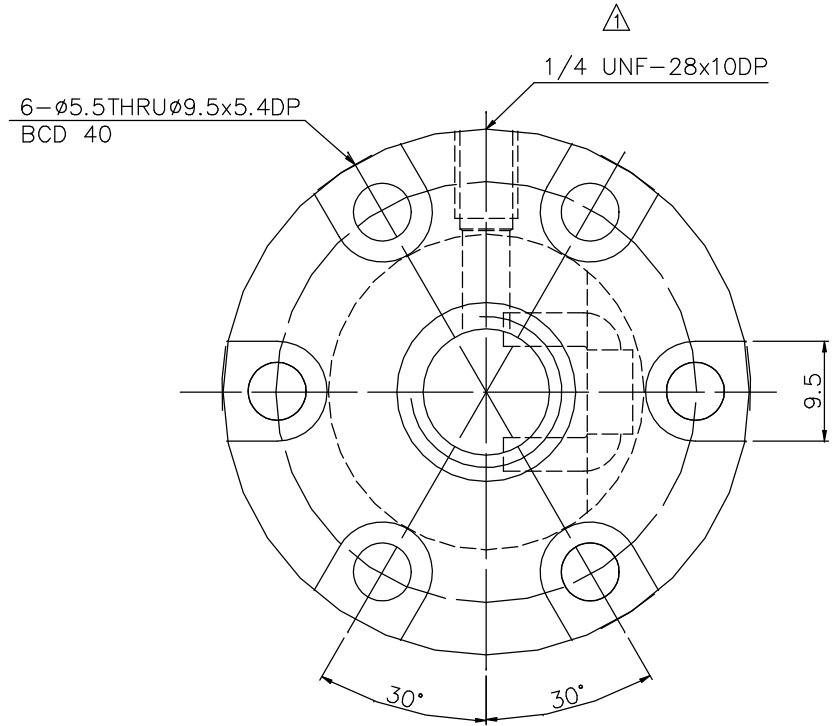


1
A10SKHA2

2
Released by HIWIN design group.

3
4
G
▽ (▽▽)

5
6
7
8
9



PRELOAD (kgf)	-
R.D	-
S.F (kgf)	-
DRAG TORQUE (kgf-cm)	-
DIRECTION OF TURN	R
PC DIA.	12.3
BALL DIA.	2
BACKLASH	-
CIRCUIT	2.5*1
LEAD ANGLE	7.49
DYNAMIC (kgf)	-
STATIC (kgf)	-
LEAD/PITCH	5.08/2.54

SPEC: R12-5.08B1-FSW

MAX. AXIAL LOAD(kgf)		LUBRCATION	
MAX. ROTATIONAL SPEED (rpm)		SPACE BALL	
DN VALUE		EI TYPE ASSEMBLY METHOD	
MAX. FEED RATE(m/min)		CUSTOMER DRAWING NO.	
ACCELERATION(m/sec ²)		CUSTOMER MC TYPE	
SUPPORT METHOD		CUSTOMER AXIAL TYPE	

	LUNCHAMFERED USE <input checked="" type="checkbox"/> R0.5 <input type="checkbox"/> R1 <input type="checkbox"/> R ROUGH M/C FIN M/C GRD SCALE 1: X 250 6.30 0.40 5 10 20 40 80 160 320 640 1200 2400	UNTOL DIMN mm UP TO 6 30 120 300 600 1200 2400 OVER ±0.1 ±0.2 ±0.3 ±0.4 ±0.5 ±0.8 ±1.0 ±1.5	MATAL SH: Rolled DATE 05.05.'04 INT: SNCM220 DWG ??? THREAD BALL TRACK APPD ??? HRC 56 ~ 62 PROCESS NO. G
E300: -	HIWIN® BALLSCREWS		CUSTR DWG.NO. A10SKHA2

*BREAK SHARP EDGE UNLESS OTHER SPECIFIED.
*??????R0.5MAX
● THREAD END ALLOWS ABOVE LENGTH OUT OF HARDNESS TOLERANCE

05.05.'04	MOD. △	???
DATE	MODIFICATION	APPROVED

* PLEASE IGNORE CHINESE CHARACTERS WHICH ARE FOR OUR REFERENCE ONLY.