

1
A10SKTC1

2
Released by HIWIN design group.

3
▽ (G) (▽▽)

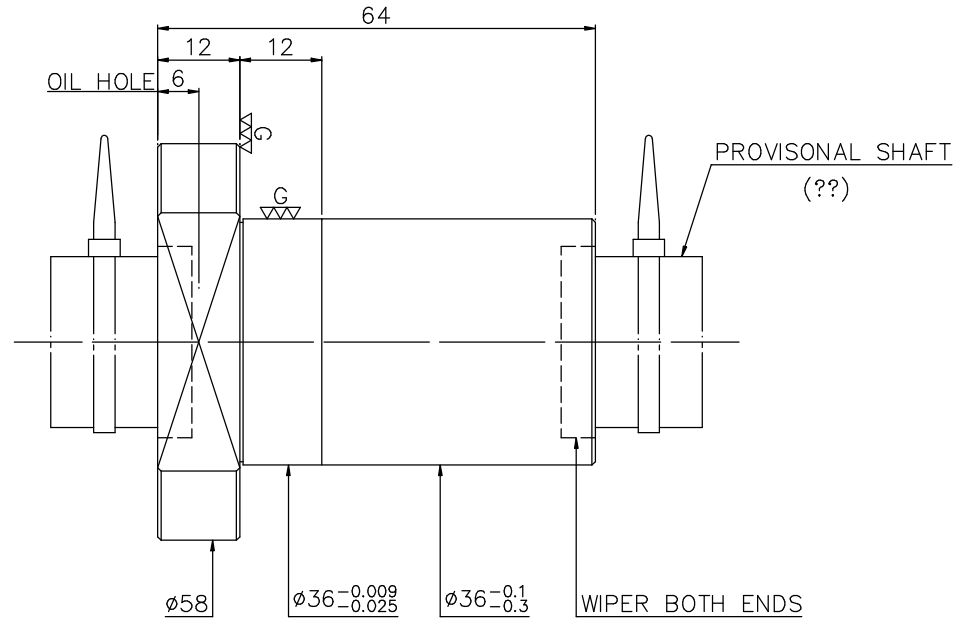
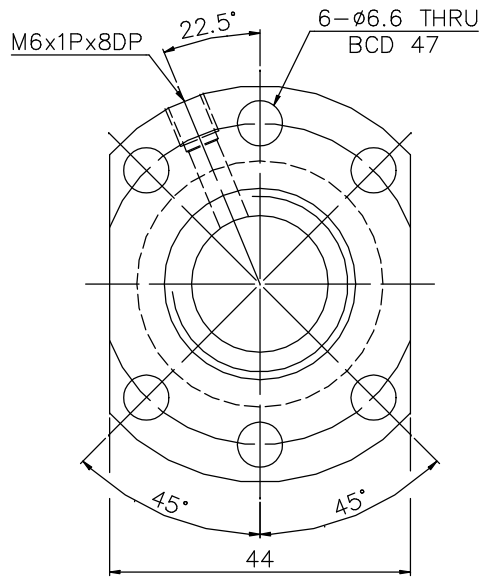
4

5

6

7

8



PRELOAD (kgf)	-
R.D	-
S.F (kgf)	-
DRAG TORQUE (kgf-cm)	-
DIRECTION OF TURN	R
PC DIA.	20.85
BALL DIA.	4.763
BACKLASH	-
CIRCUIT	3
LEAD ANGLE	8.68
DYNAMIC (kgf)	-
STATIC (kgf)	-
LEAD	10

SPEC: R20-10T3-FSI

MAX. AXIAL LOAD (kgf)		LUBRCATION		SH: Rolled	DATE	05.11.'04
MAX. ROTATIONAL SPEED (rpm)		SPACE BALL		NT: SNCM220	DWG	???
DN VALUE		EI TYPE ASSEMBLY METHOD		THREAD BALL TRACK	APPD	???
MAX. FEED RATE (m/min)		CUSTOMER DRAWING NO.		HRC 56 ~ 62	PROCESS NO.	G
ACCELERATION (m/sec ²)		CUSTOMER MIC TYPE				
SUPPORT METHOD		CUSTOMER AXIAL TYPE				

THREAD LENGTH	UNLCHAMFERED USE	RO.5	R1	R	SCALE	1: X				
±T	ROUGH M/C	FIN M/C	GRD							
±E	2.5 ₀	6.3 ₀	0.4 ₀							
	▽	▽	▽							
	UNTOL DIMN mm									
	UP	6	30	120	300	600	1200	2400	OVER	
	TO	±0.1	±0.2	±0.3	±0.4	±0.5	±0.8	±1.0	±1.5	
	E300: -									
	HIWIN BALLSCREWS									
	CUSTR									
	DWG.NO.						A10SKTC1			

*BREAK SHARP EDGE UNLESS OTHER SPECIFIED.
*??????R0.5MAX
* THREAD END ALLOWS ABOVE LENGTH OUT OF HARDNESS TOLERANCE

* PLEASE IGNORE CHINESE CHARACTERS WHICH ARE FOR OUR REFERENCE ONLY.

05.11.'04	MOD. B2->C1	???
DATE	MODIFICATION	APPROVED