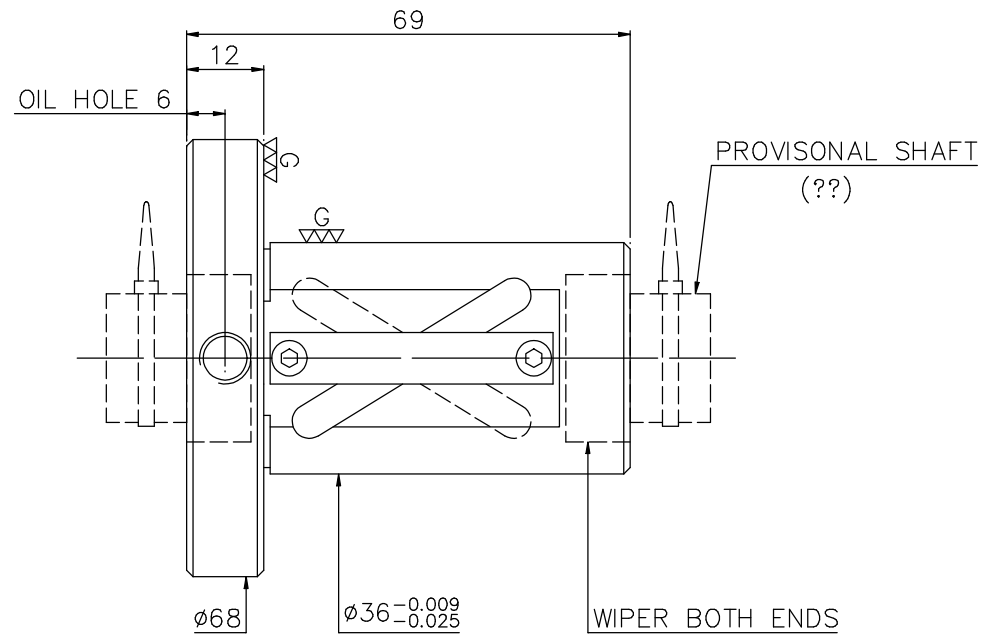
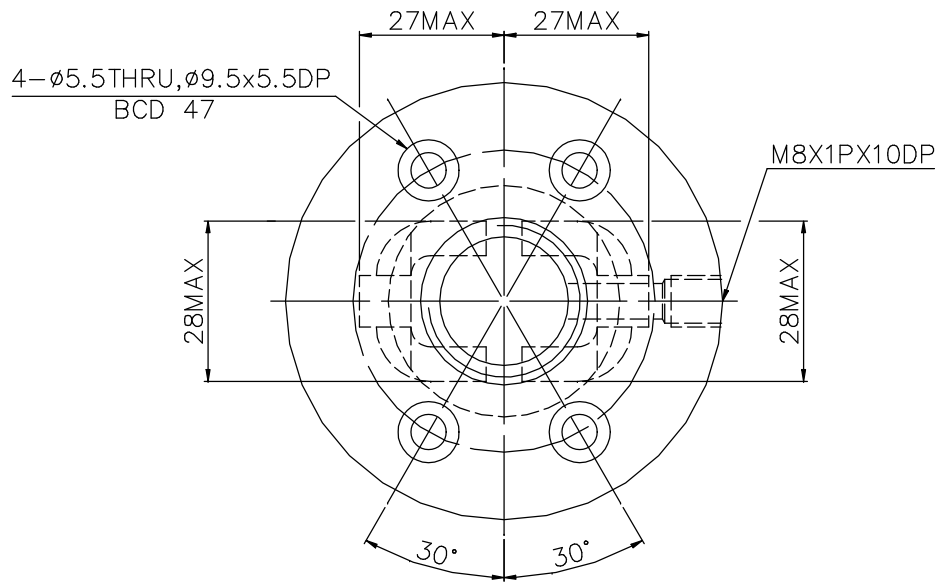


1
A10SKUA1

2
Released by HIWIN design group.

3
4
5
6
7
8
9
G
▽ (▽▽)



NOTE: ?? A10SL9 ???? ?

PRELOAD (kgf)	83
R.D	-
S.F (kgf)	0.15~1.85
DRAG TORQUE (kgf-cm)	0.35~4.35
DIRECTION OF TURN	R
PC DIA.	20.36
BALL DIA.	3.175
BACKLASH	
CIRCUIT	1.5*2
LEAD ANGLE	17.36
DYNAMIC (kgf)	792
STATIC (kgf)	1744
LEAD/ PITCH	20/5

SPEC:2R20-20A2-DFSV

MAX. AXIAL LOAD (kgf)		LUBRCATION		PRELOAD (kgf)	83
MAX. ROTATIONAL SPEED (rpm)		SPACE BALL		R.D	-
DN VALUE		EI TYPE ASSEMBLY METHOD		S.F (kgf)	0.15~1.85
MAX. FEED RATE (m/min)		CUSTOMER DRAWING NO.		DRAG TORQUE (kgf-cm)	0.35~4.35
ACCELERATION (m/sec ²)		CUSTOMER MIC TYPE		DIRECTION OF TURN	R
SUPPORT METHOD		CUSTOMER AXIAL TYPE		PC DIA.	20.36
				BALL DIA.	3.175
				BACKLASH	
				CIRCUIT	1.5*2
				LEAD ANGLE	17.36
				DYNAMIC (kgf)	792
				STATIC (kgf)	1744
				LEAD/ PITCH	20/5

	UNCHAMFERED USE <input type="checkbox"/> R0.5 <input checked="" type="checkbox"/> R1 <input type="checkbox"/> R ROUGH M/C / FIN M/C GRD SCALE 250 6.30 0.40 1: X 120 300 600 1200 2400 2400	MATAL	SH: CF53	DATE	04.17.'04
	UNTOL DIMN mm UP TO 6 30 120 300 600 1200 2400 ±0.1 ±0.2 ±0.3 ±0.4 ±0.5 ±0.8 ±1.0 ±1.5	THREAD BALL TRACK APPD Paul HRC 56 ~ 62 PROCESS NO. G			
E300: -		CUSTR		DWG.	???
HIWIN® BALLSCREWS		DWG.NO.	A10SKUA1		

*BREAK SHARP EDGE UNLESS OTHER SPECIFIED.
*??????R0.5MAX
● THREAD END ALLOWS ABOVE LENGTH OUT OF HARDNESS TOLERANCE

DATE	MODIFICATION	APPROVED

* PLEASE IGNORE CHINESE CHARACTERS WHICH ARE FOR OUR REFERENCE ONLY.