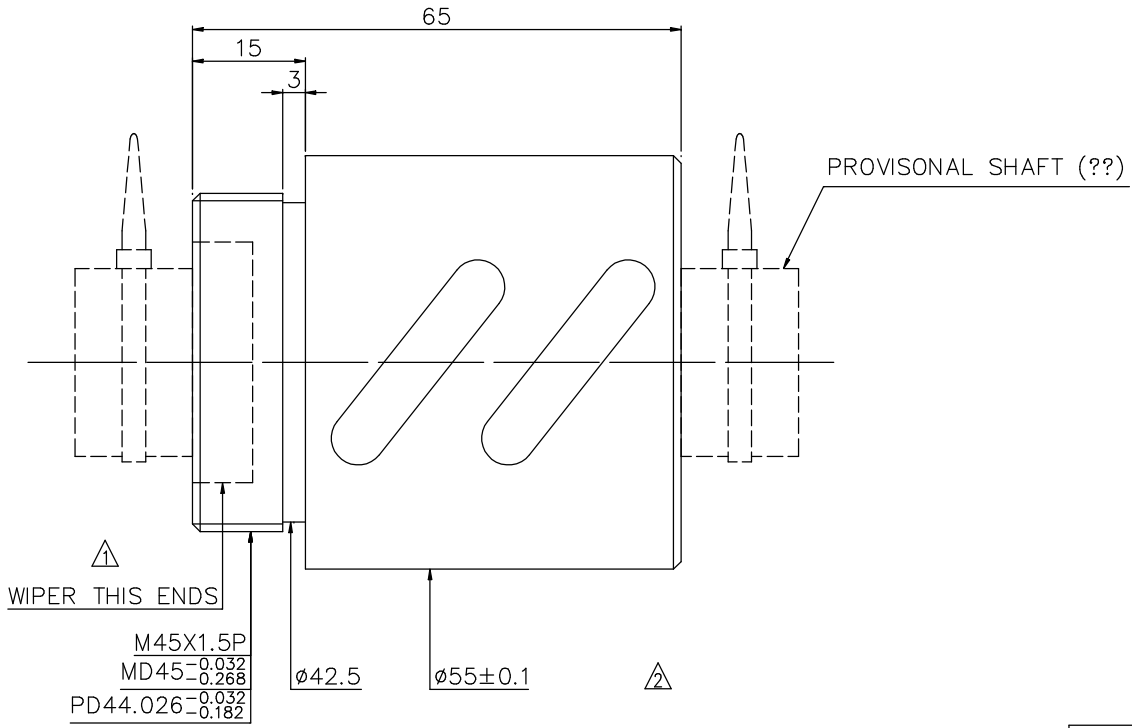
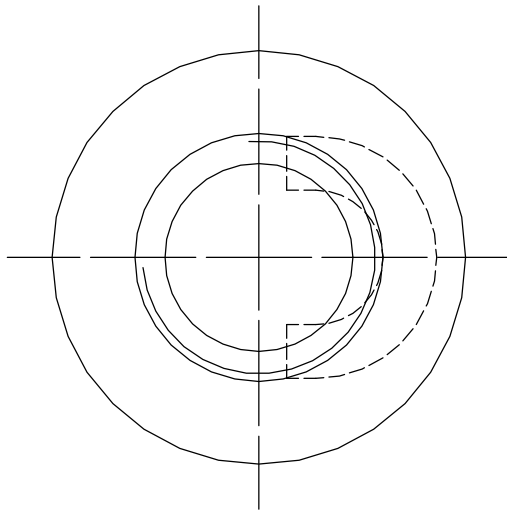


1
A10SSHA3

2
Released by HIWIN design group.

3
4
5
6
7
8
9
G
▽ (▽^G)



WIPER THIS ENDS
M45X1.5P
MD45_{-0.032}^{-0.268}
PD44.026_{-0.032}^{-0.182}

ø42.5 ø55±0.1

| | |
|----------------------|-------|
| PRELOAD (kgf) | ~ |
| R.D. | ~ |
| S.F. (kgf) | ~ |
| DRAG TORQUE (kgf-cm) | ~ |
| DIRECTION OF TURN | R |
| P.C. DIA. | 26.1 |
| BALL DIA. | 4.763 |

SPEC: R25-10A2-RSB

| | | | | | |
|------------------------------------|--|-------------------------|--|---------------|-------|
| MAX. AXIAL LOAD (kgf) | | LUBRICATION | | BALL DIA. | 4.763 |
| MAX. ROTATIONAL SPEED (rpm) | | SPACE BALL | | BACKLASH | |
| DN VALUE | | EI TYPE ASSEMBLY METHOD | | CIRCUIT | 1.5*2 |
| MAX. FEED RATE (m/min) | | CUSTOMER DRAWING NO. | | LEAD ANGLE | 6.95 |
| ACCELERATION (m/sec ²) | | CUSTOMER MC TYPE | | DYNAMIC (kgf) | 1661 |
| SUPPORT METHOD | | CUSTOMER AXIAL TYPE | | STATIC (kgf) | 3468 |
| | | | | LEAD | 10 |

| | | | | | |
|-------|--|---|------------|----------|------------|
| | UNCHAMFERED USE <input type="checkbox"/> RO.5 <input checked="" type="checkbox"/> R1 <input type="checkbox"/> R ROUGH M/C FIN M/C GRD SCALE 1: X | MAT. | SH: ROLLED | DATE | 2008.05.28 |
| | NORMAL TOLERANCE mm UP TO 6 30 120 300 600 1200 2400 OVER ±0.1 ±0.2 ±0.3 ±0.4 ±0.5 ±0.8 ±1.0 ±1.5 | NT: SNCM220/Equivalent THREAD BALL TRACK HRC 56 ~ 62 | DWG | APPD | Lady |
| CUSTR | | DWG.NO. | | A10SSHA3 | |

*BREAK SHARP EDGE UNLESS OTHER SPECIFIED.
*??????RO.5MAX
● THREAD END ALLOWS ABOVE LENGTH OUT OF HARDNESS TOLERANCE

| | | |
|------------|--------------|----------|
| 2008.05.29 | MOD. | Lady |
| DATE | MODIFICATION | APPROVED |

* PLEASE IGNORE CHINESE CHARACTERS WHICH ARE FOR OUR REFERENCE ONLY.

HIWIN BALLSCREWS