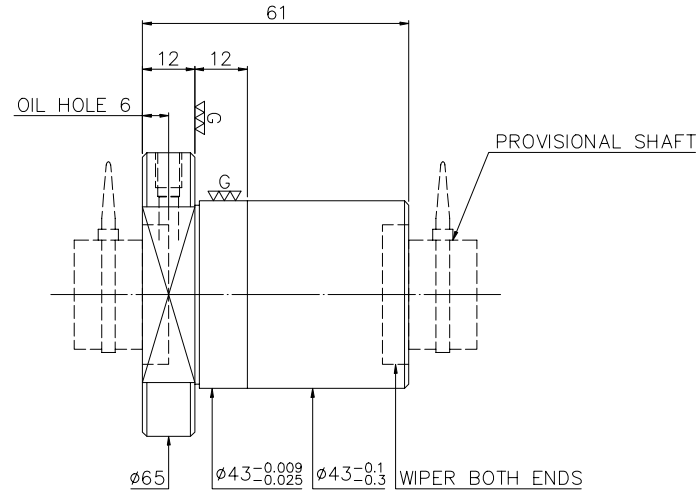
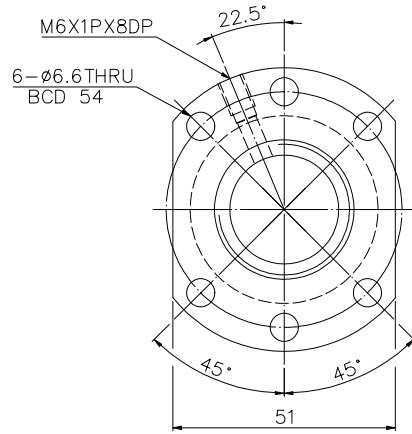


1
A1128NA1

2
Released by HIWIN design group.

3
4
G
▽ (▽▽)

A
B
C
D
E
F
G



PRELOAD(kgf)	~
R.D	~
S.F (kgf)	~
DRAG TORQUE(kgf-cm)	~
DIRECTION OF TURN	R
PC DIA.	25.881

SPEC: R25-6.35T4-FSI

MAX. AXIAL LOAD (kgf)	LUBRCATION	BALL DIA.	3.969
MAX. ROTATIONAL SPEED (rpm)	SPACE BALL	BACKLASH	~
DN VALUE	EI TYPE ASSEMBLY METHOD	CIRCUIT	4
MAX. FEED RATE (m/min)	CUSTOMER DRAWING NO.	LEAD ANGLE	4.47
ACCELERATION (m/sec ²)	CUSTOMER MC TYPE	DYNAMIC (kgf)	~
SUPPORT METHOD	CUSTOMER AXIAL TYPE	STATIC (kgf)	~
		LEAD	6.35

<p>THREAD LENGTH</p>	UNCHAMFERED USE <input type="checkbox"/> R0.5 <input checked="" type="checkbox"/> R1 <input type="checkbox"/> R ROUGH W/C FIN. W/C GRD. <input type="checkbox"/> 20° <input type="checkbox"/> 6.35 <input type="checkbox"/> 0.25 <input type="checkbox"/> 0.4	MATA SH: CF53 DATE 2006.12.13 NT: SNCM220 DWG KAI THREAD BALL TRACK APPD LADY HRC 56 ~ 62 PROCESS NO. G
E300: ~	UNTOL DIMN mm UP TO 6 30 120 300 600 1200 2400 2400 ±0.1 ±0.2 ±0.3 ±0.4 ±0.5 ±0.8 ±1.0 ±1.5	CUSTR DWG.NO. A1128NA1

*BREAK SHARP EDGE UNLESS OTHER SPECIFIED.
 *未畫倒角者以R0.5MAX
 ● THREAD END ALLOWS ABOVE LENGTH OUT OF HARDNESS TOLERANCE

DATE	MODIFICATION	APPROVED
------	--------------	----------

* PLEASE IGNORE CHINESE CHARACTERS WHICH ARE FOR OUR REFERENCE ONLY.