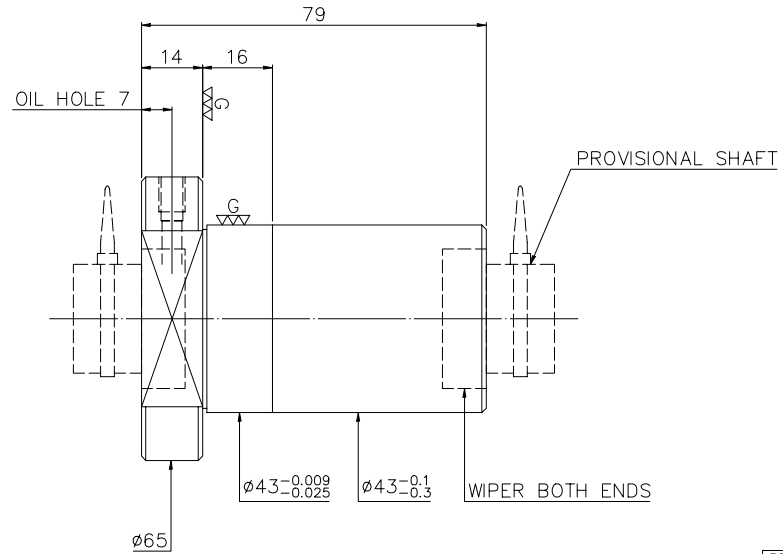
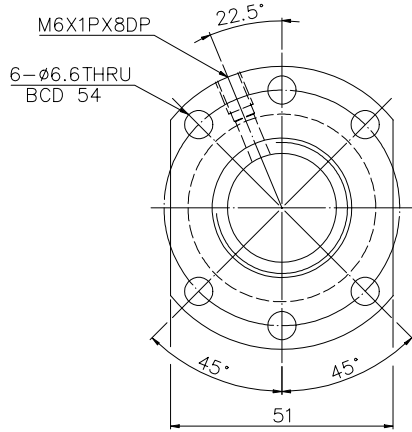


1
A1128PA1

2
Released by HIWIN design group.

3
4
G
▽ (▽▽)

A
B
C
D
E
F
G



PRELOAD(kgf)	~
R.D	~
S.F (kgf)	~
DRAG TORQUE(kgf-cm)	~
DIRECTION OF TURN	R
PC DIA.	25.986

SPEC: 2R25-12.7T3-DFS1

MAX. AXIAL LOAD(kgf)		LUBRICATION	BALL DIA.	3.969
MAX. ROTATIONAL SPEED (rpm)		SPACE BALL	BACKLASH	~
DN VALUE		E1 TYPE ASSEMBLY METHOD	CIRCUIT	3
MAX. FEED RATE (m/min)		CUSTOMER DRAWING NO.	LEAD ANGLE	8.84
ACCELERATION (m/sec ²)		CUSTOMER MC TYPE	DYNAMIC (kgf)	~
SUPPORT METHOD		CUSTOMER AXIAL TYPE	STATIC (kgf)	~
			LEAD	12.7

UNCHAMFERED USE <input type="checkbox"/> R0.5 <input checked="" type="checkbox"/> R1 <input type="checkbox"/> R SCALE 1: X MATERIAL SH: CF53 DATE 2006.12.14 INT: SNCM220 DWG KAI THREAD BALL TRACK APPD LADY HRC 56 ~ 62 PROCESS NO. G CUSTR DWG.NO. A1128PA1	THREAD LENGTH E300: ~ *BREAK SHARP EDGE UNLESS OTHER SPECIFIED. *未畫倒角者以R0.5MAX ● THREAD END ALLOWS ABOVE LENGTH OUT OF HARDNESS TOLERANCE
---	---

DATE	MODIFICATION	APPROVED
------	--------------	----------

* PLEASE IGNORE CHINESE CHARACTERS WHICH ARE FOR OUR REFERENCE ONLY.