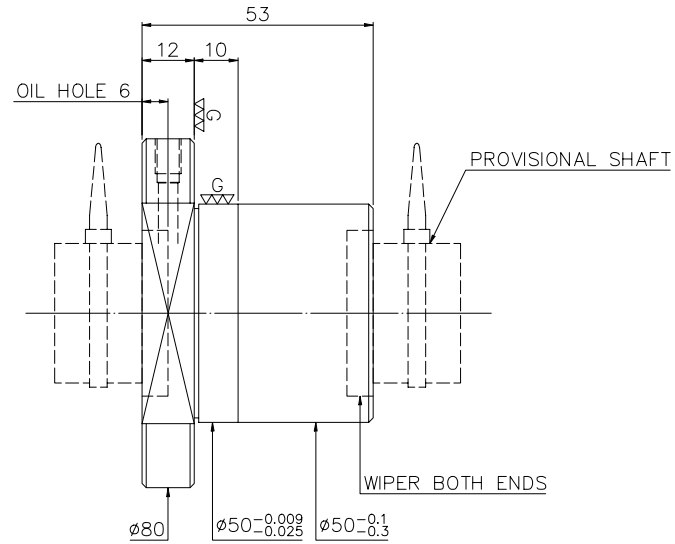
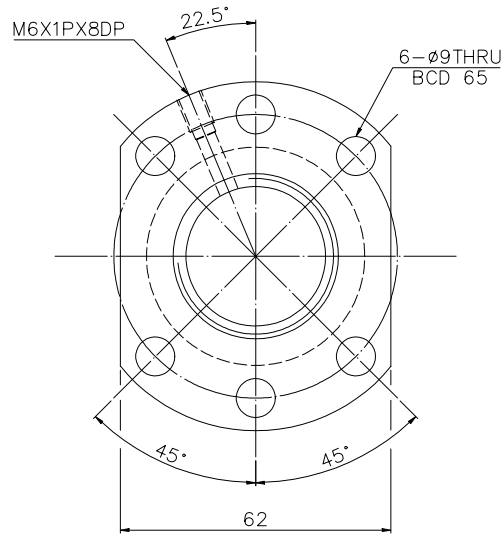


1
A1128QA1

2
Released by HIWIN design group.

3
4
6
G
▽ (▽▽)

A
B
C
D
E
F
G



PRELOAD(kgf)	~
R.D	~
S.F (kgf)	~
DRAG TORQUE(kgf-cm)	~
DIRECTION OF TURN	R
PC DIA.	32.4
BALL DIA.	3.175
BACKLASH	
CIRCUIT	4
LEAD ANGLE	2.86
DYNAMIC (kgf)	~
STATIC (kgf)	~
LEAD	5.08

SPEC: R32-5.08T4-FSI

MAX. AXIAL LOAD(kgf)	LUBRCATION	
MAX. ROTATIONAL SPEED (rpm)	SPACE BALL	
DN VALUE	EI TYPE ASSEMBLY METHOD	
MAX. FEED RATE (m/min)	CUSTOMER DRAWING NO.	
ACCELERATION (m/sec ²)	CUSTOMER MC TYPE	
SUPPORT METHOD	CUSTOMER AXIAL TYPE	

UNCHAMFERED USE	<input type="checkbox"/> R0.5	<input checked="" type="checkbox"/> R1	<input type="checkbox"/> R	MATERIAL	SH: CF53	DATE	2006.12.13
ROUGH M/C FIN. M/C	25°	6.35	0.45	SCALE	NT: SNCM220	DWG	KAI
UNTOL DIMN mm	UP 6 30 120 300 600 1200 2400	TO 6 30 120 300 600 1200 2400	OVER 6 30 120 300 600 1200 2400	THREAD BALL TRACK	APPD	LADY	
	±0.1 ±0.2 ±0.3 ±0.4 ±0.5 ±0.8 ±1.0 ±1.5			HRC 56 ~ 62	PROCESS NO.	G	
				CUSTR			
				DWG.NO.			A1128QA1

*BREAK SHARP EDGE UNLESS OTHER SPECIFIED.
*未畫倒角者以R0.5MAX

● THREAD END ALLOWS ABOVE LENGTH OUT OF HARDNESS TOLERANCE

DATE	MODIFICATION	APPROVED

* PLEASE IGNORE CHINESE CHARACTERS WHICH ARE FOR OUR REFERENCE ONLY.