

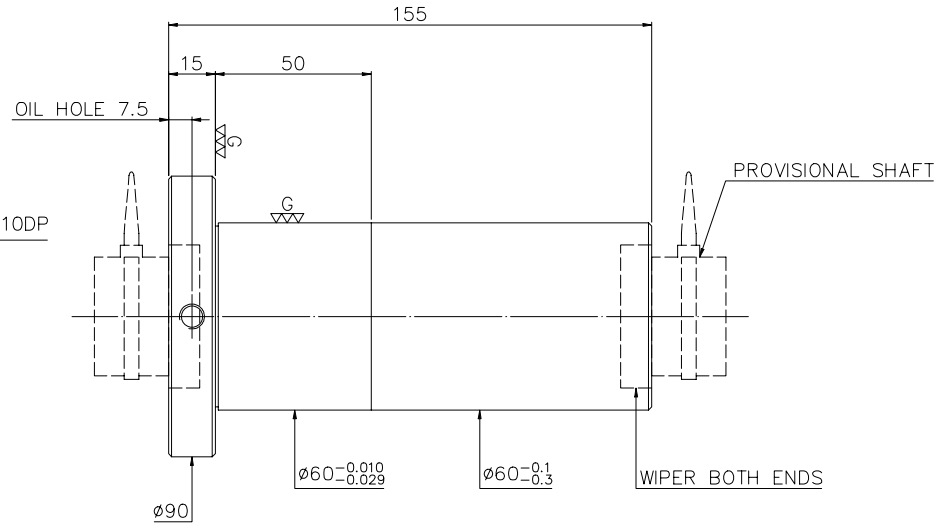
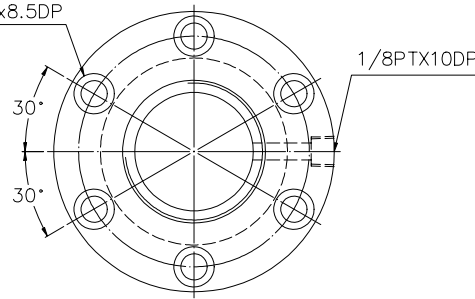
1
A1128RA1

2
Released by HIWIN design group.

3
4
G
▽ (▽▽)

A
B
C
D
E
F
G

6-∅8.5 THRU, ∅13x8.5DP
BCD 74



PRELOAD(kgf)	~
R.D	~
S.F (kgf)	~
DRAG TORQUE(kgf-cm)	~
DIRECTION OF TURN	R
PC DIA.	37.925

SPEC: 2R38.1-25.4T4-DFS1

MAX. AXIAL LOAD(kgf)	LUBRICATION	BALL DIA.	4.763
MAX. ROTATIONAL SPEED (rpm)	SPACE BALL	BACKLASH	~
DN VALUE	EI TYPE ASSEMBLY METHOD	CIRCUIT	4
MAX. FEED RATE (m/min)	CUSTOMER DRAWING NO.	LEAD ANGLE	12.03°
ACCELERATION (m/sec ²)	CUSTOMER MC TYPE	DYNAMIC (kgf)	~
SUPPORT METHOD	CUSTOMER AXIAL TYPE	STATIC (kgf)	~
		LEAD/PITCH	25.4/12.7

UNCHAMFERED USE <input type="checkbox"/> R0.5 <input checked="" type="checkbox"/> R1 <input type="checkbox"/> R ROUGH WZ/FIN W/C GRD. <input type="checkbox"/> 250 <input type="checkbox"/> 6.35 <input type="checkbox"/> 0.50 UNTOL DIMN mm UP 6 30 120 300 600 1200 1200 OVER TO ±0.1 ±0.2 ±0.3 ±0.4 ±0.5 ±0.8 ±1.0 ±1.5 E300: ~	MATERIAL SH: CF53 DATE 2006.12.14 INT: SNCM220 DWG KAI THREAD BALL TRACK APPD LADY HRC 56 ~ 62 PROCESS NO. G
*BREAK SHARP EDGE UNLESS OTHER SPECIFIED. *未畫倒角者以R0.5MAX ● THREAD END ALLOWS ABOVE LENGTH OUT OF HARDNESS TOLERANCE	CUSTR DWG.NO. A1128RA1

DATE	MODIFICATION	APPROVED

* PLEASE IGNORE CHINESE CHARACTERS WHICH ARE FOR OUR REFERENCE ONLY.