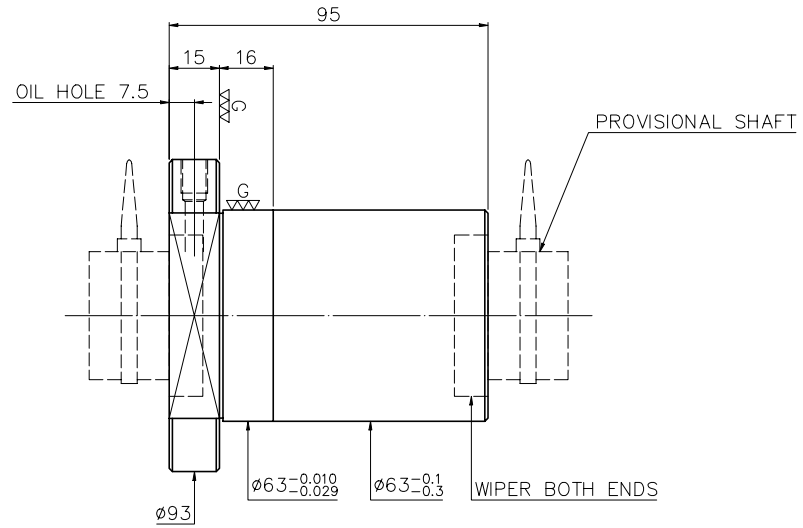
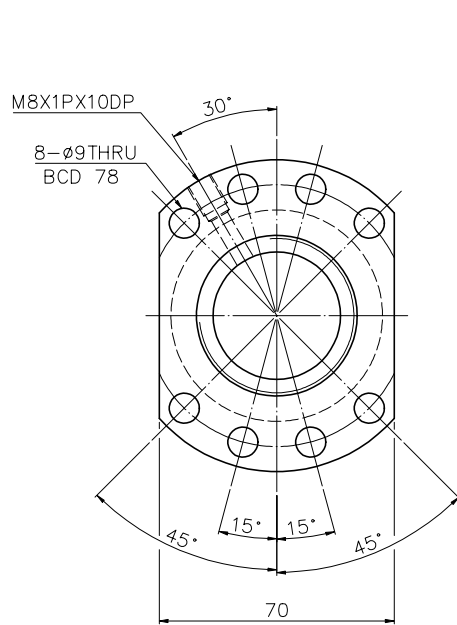


A1128SA1

Released by HIWIN design group.

▽ (▽▽) $\frac{G}{6}$



PRELOAD(kgf)	~
R.D	~
S.F (kgf)	~
DRAG TORQUE(kgf-cm)	~
DIRECTION OF TURN	R
PC DIA.	39.08
BALL DIA.	6.35
BACKLASH	~
CIRCUIT	4
LEAD ANGLE	5.59°
DYNAMIC (kgf)	~
STATIC (kgf)	~
LEAD	12.01

SPEC: R38.1-12.01T4-FSI

MAX. AXIAL LOAD(kgf)	LUBRICATION	BALL DIA.	6.35
MAX. ROTATIONAL SPEED (rpm)	SPACE BALL	BACKLASH	~
DN VALUE	EI TYPE ASSEMBLY METHOD	CIRCUIT	4
MAX. FEED RATE (m/min)	CUSTOMER DRAWING NO.	LEAD ANGLE	5.59°
ACCELERATION (m/sec ²)	CUSTOMER MC TYPE	DYNAMIC (kgf)	~
SUPPORT METHOD	CUSTOMER AXIAL TYPE	STATIC (kgf)	~
		LEAD	12.01

UNCHAMFERED USE <input type="checkbox"/> R0.5 <input checked="" type="checkbox"/> R1 <input type="checkbox"/> R	MATERIAL	SH: CF53	DATE	2006.12.14
ROUGH W/C FIN W/C GRD $\frac{25^\circ}{\nabla}$ $\frac{6.35}{\nabla}$ $\frac{0.25}{\nabla}$	SCALE	INT: SNCM220	DWG	KAI
UNTOL DIMN mm	1: X	THREAD BALL TRACK	APPD	LADY
UP 16 30 120 300 600 1200 2400 OVER		HRC 56 ~ 62	PROCESS NO.	G
±0.1 ±0.2 ±0.3 ±0.4 ±0.5 ±0.8 ±1.0 ±1.5		CUSTR		
		DWG.NO.	A1128SA1	

*BREAK SHARP EDGE UNLESS OTHER SPECIFIED.
*未畫倒角者以R0.5MAX
● THREAD END ALLOWS ABOVE LENGTH OUT OF HARDNESS TOLERANCE

DATE	MODIFICATION	APPROVED
------	--------------	----------

* PLEASE IGNORE CHINESE CHARACTERS WHICH ARE FOR OUR REFERENCE ONLY.