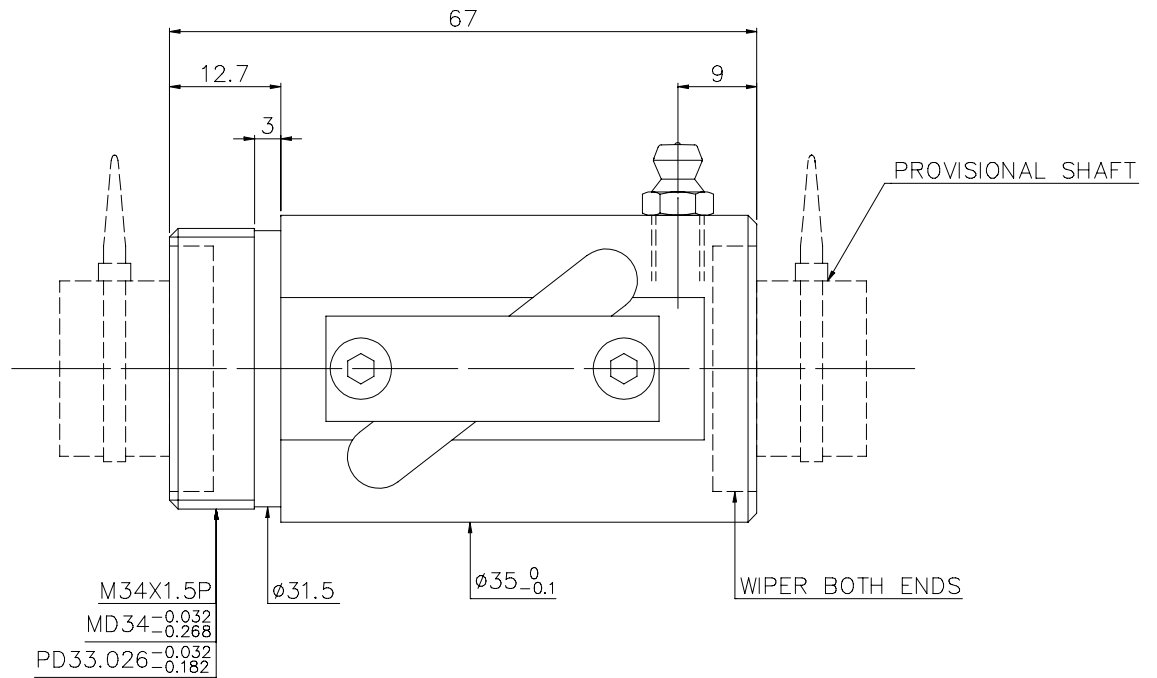
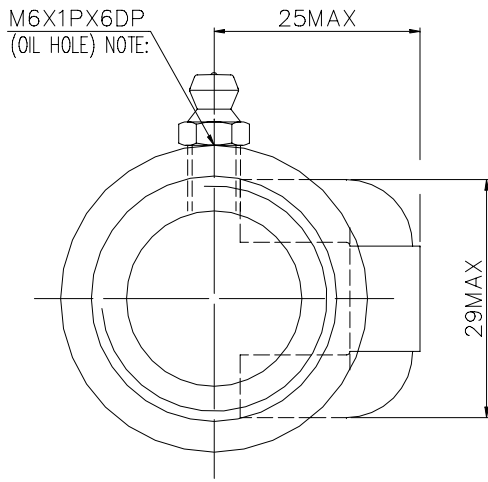


1
A11453A1

2
Released by HIWIN design group.

4
G
▽ (▽▽)



PRELOAD(kgf)	~
R.D	~
S.F (kgf)	~
DRAG TORQUE(kgf-cm)	~
DIRECTION OF TURN	R
PC DIA.	20.85
BALL DIA.	4.763
BACKLASH	~
CIRCUIT	2.5*1
LEAD ANGLE	8.68
DYNAMIC (kgf)	~
STATIC (kgf)	~
LEAD	10

SPEC: R20-10B1-RSV

MAX. AXIAL LOAD(kgf)		LUBRICATION		SH: ROLLED	DATE	2007.05.01
MAX. ROTATIONAL SPEED (rpm)		SPACE BALL		NT: SNCM220/SCM415	DWG	KAI
DN VALUE		EI TYPE ASSEMBLY METHOD		THREAD BALL TRACK	APPD	Lady
MAX. FEED RATE(m/min)		CUSTOMER DRAWING NO.		HRC 56 ~ 62	PROCESS NO.	G
ACCELERATION(m/sec ²)		CUSTOMER MC TYPE				
SUPPORT METHOD		CUSTOMER AXIAL TYPE				

UNCHAMFERED USE	<input type="checkbox"/> RO.5	<input checked="" type="checkbox"/> R1	<input type="checkbox"/> R	MATAL	SH: ROLLED	DATE	2007.05.01
ROUGH M/C/FIN M/C	GRD	SCALE	1: X	THREAD BALL TRACK	APPD	Lady	
25g ▽	6.3g ▽	0.4g ▽		HRC 56 ~ 62	PROCESS NO.	G	
UNTOL DIMN mm							
UP TO	6	30	120	300	600	1200	2400
	±0.1	±0.2	±0.3	±0.4	±0.5	±0.8	±1.0 ±1.5
E300: ~				HIWIN® BALLSCREWS			

*BREAK SHARP EDGE UNLESS OTHER SPECIFIED.
*?????RO.5MAX
● THREAD END ALLOWS ABOVE LENGTH OUT OF HARDNESS TOLERANCE

DATE	MODIFICATION	APPROVED

* PLEASE IGNORE CHINESE CHARACTERS WHICH ARE FOR OUR REFERENCE ONLY.