

1
A114AHA3

2 Released by HIWIN design group.

3
4 ∇ (∇^G)

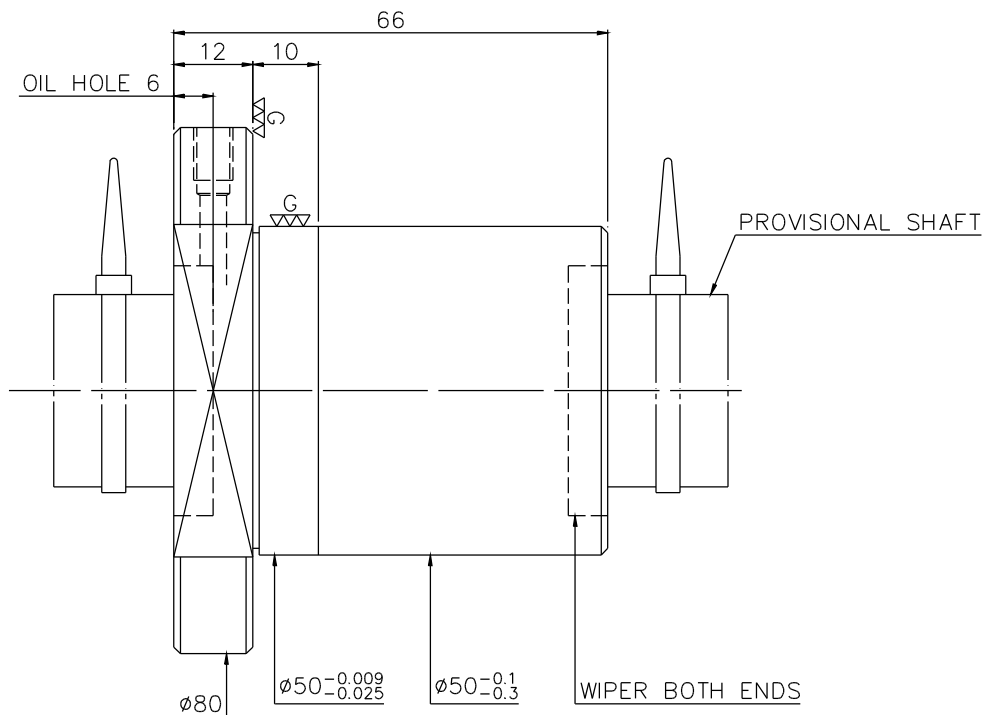
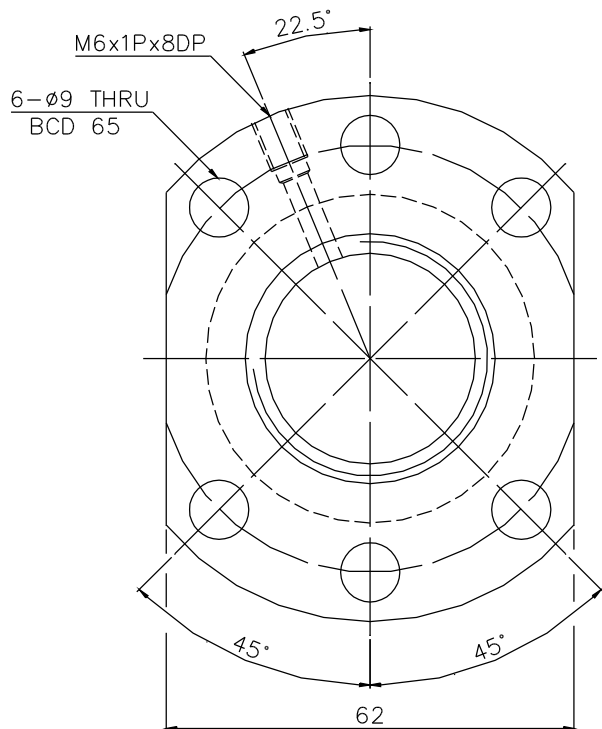
5

6

7

8

9



PRELOAD (kgf)	~
R.D	~
S.F (kgf)	~
DRAG TORQUE (kgf-cm)	~
DIRECTION OF TURN	R
PC DIA.	32.4
BALL DIA.	3.175
BACKLASH	~
CIRCUIT	6
LEAD ANGLE	2.81
DYNAMIC (kgf)	△1830
STATIC (kgf)	△5545
LEAD	5

SPEC:R32-5T6-FSI

MAX. AXIAL LOAD (kgf)		LUBRCATION		SH: ROLLED	DATE	2007.05.25
MAX. ROTATIONAL SPEED (rpm)		SPACE BALL		NT: SNCM220/SCM415	DWG	KAI
DN VALUE		E1 TYPE ASSEMBLY METHOD		THREAD BALL TRACK	APPD	LADY
MAX. FEED RATE (m/min)		CUSTOMER DRAWING NO.		HRC 56 ~ 62	PROCESS NO.	G
ACCELERATION (m/sec ²)		CUSTOMER MIC TYPE				
SUPPORT METHOD		CUSTOMER AXIAL TYPE				

THREAD LENGTH		LUNCHAMFERED USE <input type="checkbox"/> R0.5 <input checked="" type="checkbox"/> R1 <input type="checkbox"/> R		SCALE		MATAL		SH: ROLLED		DATE	
E300: ~		ROUGH M/C FIN M/C GRD		1: X		NT: SNCM220/SCM415		DWC		KAI	
		25 ₀ 6.3 ₀ 0.4 ₀		UNTOL DIMN mm		THREAD BALL TRACK		APPD		LADY	
		∇ ∇ ∇		UP TO 6 30 120 300 600 1200 2400		HRC 56 ~ 62		PROCESS NO.		G	
		±0.1 ±0.2 ±0.3 ±0.4 ±0.5 ±0.8 ±1.0 ±1.5		OVER		CUSTR		DWG.NO.		A114AHA3	
				HIWIN® BALLSCREWS							

*BREAK SHARP EDGE UNLESS OTHER SPECIFIED.
*?????RO.5MAX
● THREAD END ALLOWS ABOVE LENGTH OUT OF HARDNESS TOLERANCE

05.25.07	MOD. △~△	Lady
DATE	MODIFICATION	APPROVED

* PLEASE IGNORE CHINESE CHARACTERS WHICH ARE FOR OUR REFERENCE ONLY.