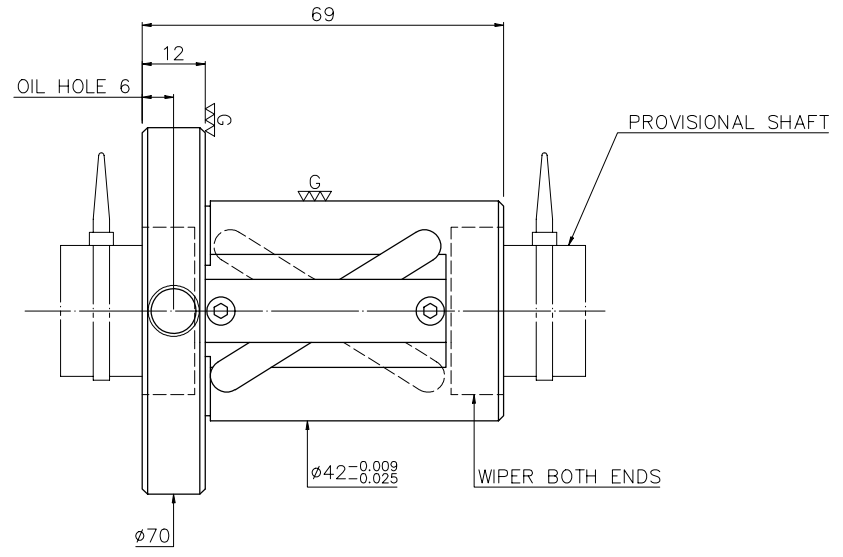
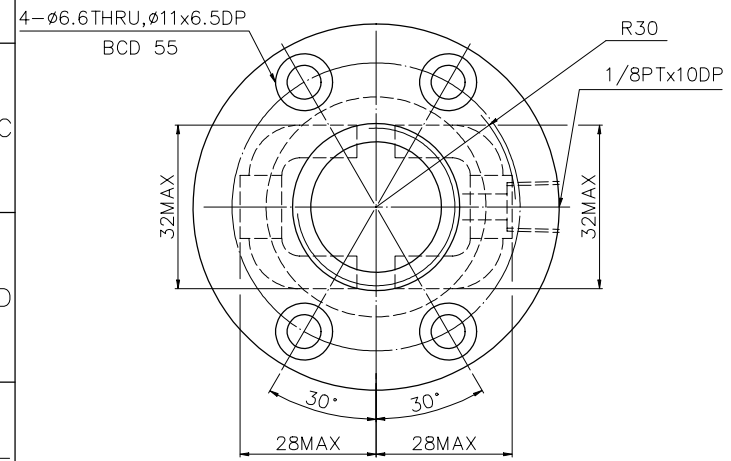


A  
B  
C  
D  
E  
F  
G



PRELOAD(kgf)	~
R.D	~
S.F (kgf)	~
DRAG TORQUE(kgf-cm)	~
DIRECTION OF TURN	R
PC DIA.	26.03
BALL DIA.	3.969

SPEC: 4R25-25A2-DFSV

MAX. AXIAL LOAD (kgf)	LUBRICATION	SPACE BALL	BACKLASH	$\Delta$
MAX. ROTATIONAL SPEED (rpm)	EI TYPE ASSEMBLY METHOD	CIRCUIT	LEAD ANGLE	1.5*2
DN VALUE	CUSTOMER DRAWING NO.	DYNAMIC (kgf)	1174	
MAX. FEED RATE (m/min)	CUSTOMER MC TYPE	STATIC (kgf)	2730	
ACCELERATION (m/sec <sup>2</sup> )	CUSTOMER AXIAL TYPE	LEAD/PITCH	25/12.5	
SUPPORT METHOD				

UNCHAMFERED USE <input type="checkbox"/> R0.5 <input checked="" type="checkbox"/> R1 <input type="checkbox"/> R SCALE 1: X THREAD LENGTH E300: ~	MOUNTING TOLERANCES UN TOL DIMN mm UP 6 30 120 300 600 1200 2400 2400 TO $\pm$ 0.1 $\pm$ 0.2 $\pm$ 0.3 $\pm$ 0.4 $\pm$ 0.5 $\pm$ 0.8 $\pm$ 1.0 $\pm$ 1.5	MATERIAL SH: ROLLED DATE 2007.07.16 NT: SNCM220/SCM415 DWG JANET THREAD BALL TRACK APPD MICHELLE HRC 56 ~ 62 PROCESS NO. G
*BREAK SHARP EDGE UNLESS OTHER SPECIFIED. *未畫倒角者以R0.5MAX ● THREAD END ALLOWS ABOVE LENGTH OUT OF HARDNESS TOLERANCE	HIWIN BALLSCREWS	CUSTR DWG.NO. A114ICA3

2007.07.16	MOD. A	MICHELLE
DATE	MODIFICATION	APPROVED

\* PLEASE IGNORE CHINESE CHARACTERS WHICH ARE FOR OUR REFERENCE ONLY.