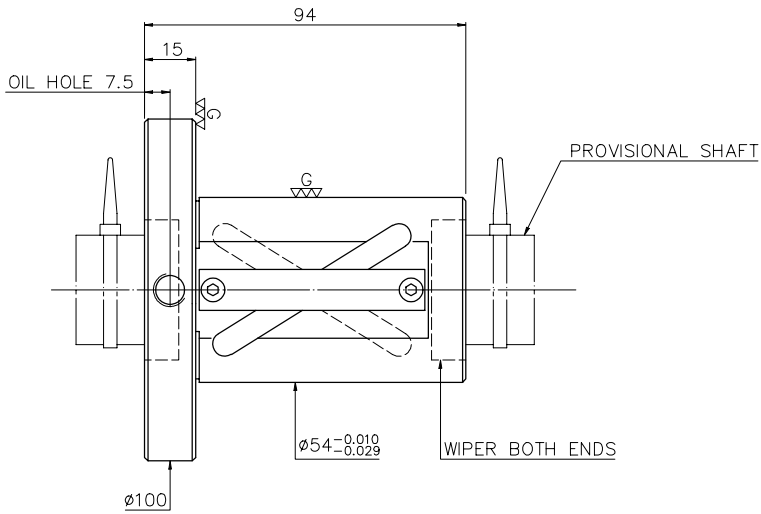
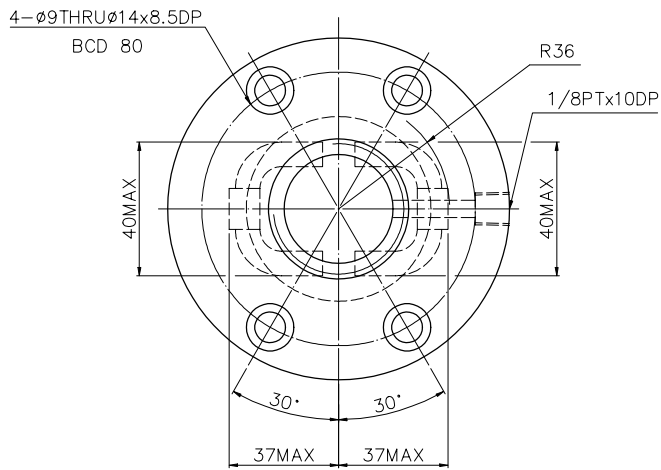


A
B
C
D
E
F
G



PRELOAD(kgf)	~
R.D	~
S.F (kgf)	~
DRAG TORQUE(Ng-m)	~
DIRECTION OF TURN	R
PC DIA.	33.26
BALL DIA.	4.763
BACKLASH	Δ
CIRCUIT	1.5*2
LEAD ANGLE	17.03
DYNAMIC (kgf)	1682
STATIC (kgf)	4208
LEAD/PITCH	32/16

SPEC: 4R32-32A2-DFSV

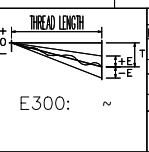
MAX. AXIAL LOAD(kgf)	LUBRICATION	BALL DIA.	4.763
MAX. ROTATIONAL SPEED (rpm)	SPACE BALL	BACKLASH	Δ
DN VALUE	EI TYPE ASSEMBLY METHOD	CIRCUIT	1.5*2
MAX. FEED RATE (m/min)	CUSTOMER DRAWING NO.	LEAD ANGLE	17.03
ACCELERATION (m/sec ²)	CUSTOMER MC TYPE	DYNAMIC (kgf)	1682
SUPPORT METHOD	CUSTOMER AXIAL TYPE	STATIC (kgf)	4208
		LEAD/PITCH	32/16

UNCHAMFERED USE R0.5 R1 R SCALE 1: X
 ROUGH MACHINING GRD FILE
 UNTOL DIMN mm
 UP 6 30 120 300 600 1200 2400
 TO 6 30 120 300 600 1200 2400
 ±0.1 ±0.2 ±0.3 ±0.4 ±0.5 ±0.8 ±1.0 ±1.5
 MATA SH: ROLLED DATE 2007.07.16
 NT: SNCM220/SCM415 DWG JANET
 THREAD BALL TRACK APPD MICHELLE
 HRC 56 ~ 62 PROCESS NO G
 CUSTR H-CHICAGO
 DWG.NO. A114IDA3

2007.07.16	MOD. Δ	MICHELLE
DATE	MODIFICATION	APPROVED

* PLEASE IGNORE CHINESE CHARACTERS WHICH ARE FOR OUR REFERENCE ONLY.

*BREAK SHARP EDGE UNLESS OTHER SPECIFIED
 *未量倒角者以R0.5MAX
 * THREAD END ALLOWS ABOVE LENGTH OUT OF HARDNESS TOLERANCE



HIWIN BALLSCREWS