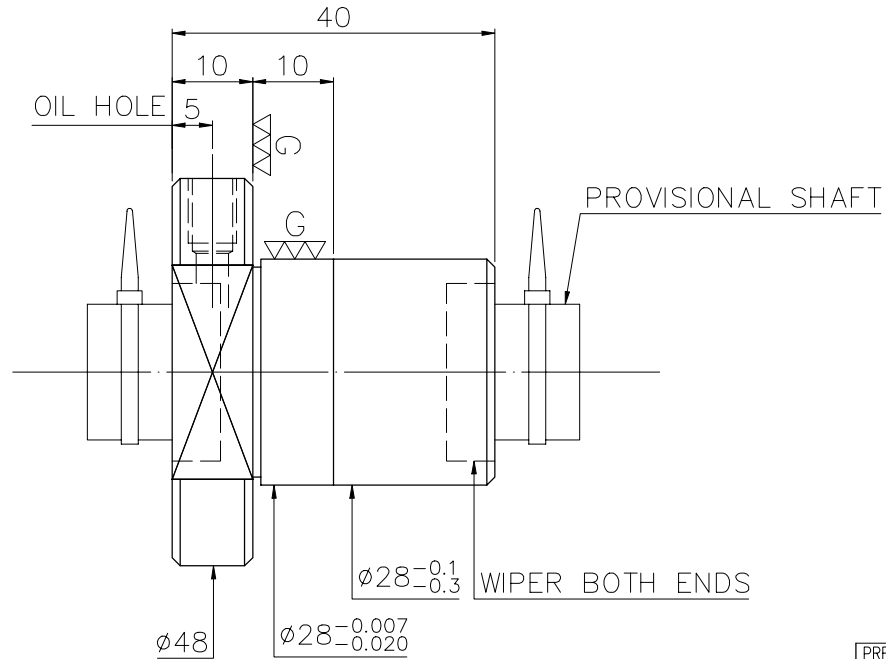
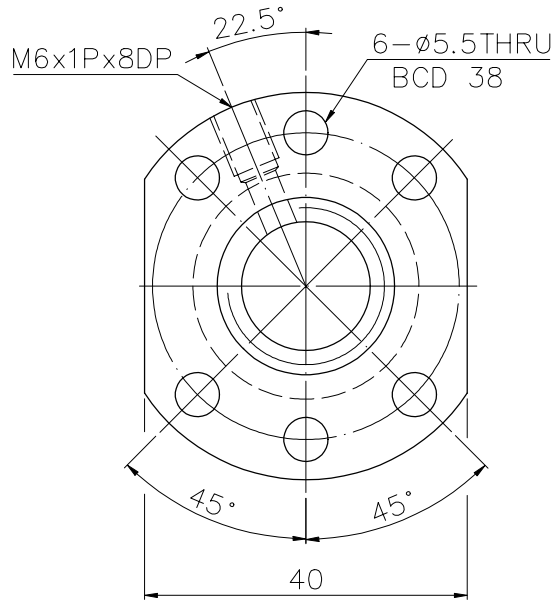


A114IJB2

Released by HIWIN design group.

6
▽ (▽▽)



PRELOAD(kgf)	~
R.D	~
S.F (kgf)	~
DRAG TORQUE(kgf-cm)	~
DIRECTION OF TURN	R
PC DIA.	16.2
BALL DIA.	3.175
BACKLASH	△
CIRCUIT	3
LEAD ANGLE	5.7
DYNAMIC (kgf)	664
STATIC (kgf)	1196
LEAD	5.08

SPEC:R16-5.08T3-FSI

MAX. AXIAL LOAD(kgf)	LUBRICATION	
MAX. ROTATIONAL SPEED (rpm)	SPACE BALL	
DN VALUE	EI TYPE ASSEMBLY METHOD	
MAX. FEED RATE (m/min)	CUSTOMER DRAWING NO.	
ACCELERATION (m/sec ²)	CUSTOMER MC TYPE	
SUPPORT METHOD	CUSTOMER AXIAL TYPE	

THREAD LENGTH E300: ~	UNCHAMFERED USE <input type="checkbox"/> R0.5 <input checked="" type="checkbox"/> R1 <input type="checkbox"/> R	SCALE 1: X	MATA SH: ROLLED DATE: 2007.07.16
	UN TOL DIMN mm UP 16 30 120 300 600 1200 2400 2400 TO 6 ±0.1 ±0.2 ±0.3 ±0.4 ±0.5 ±0.8 ±1.0 ±1.5	GRD 2.5a 6.3a 0.4a	DATE: 2007.07.16 DWG: JANET
THREAD BALL TRACK HRC 56 ~ 62		APPD MICHELLE PROCESS NO. G	
CUSTR DWG.NO.		A114IJB2	

*BREAK SHARP EDGE UNLESS OTHER SPECIFIED.
 *未畫倒角者以R0.5MAX
 ● THREAD END ALLOWS ABOVE LENGTH OUT OF HARDNESS TOLERANCE

2007.07.16	MOD. △	MICHELLE
DATE	MODIFICATION	APPROVED

* PLEASE IGNORE CHINESE CHARACTERS WHICH ARE FOR OUR REFERENCE ONLY.