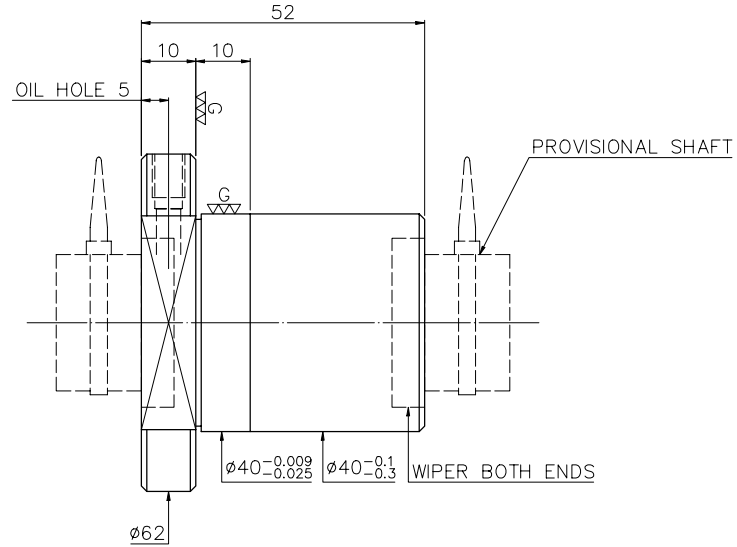
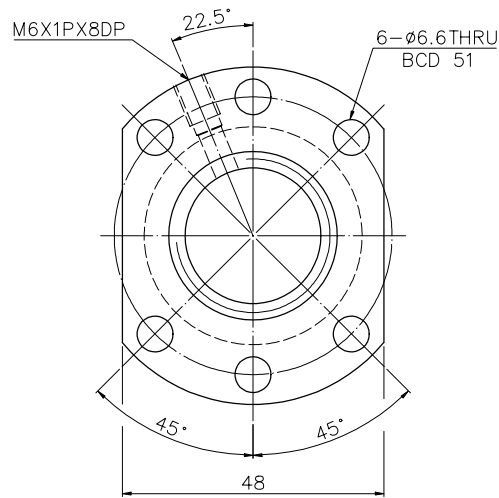


A114ILA3

Released by HIWIN design group.

6
▽ (▽▽)



PRELOAD(kgf)	~
R.D	~
S.F (kgf)	~
DRAG TORQUE(kgf-cm)	~
DIRECTION OF TURN	R
PC DIA.	25.57
BALL DIA.	3.175
BACKLASH Δ	4
CIRCUIT	3.62
LEAD ANGLE	1127
DYNAMIC (kgf)	2776
STATIC (kgf)	5.08
LEAD	

SPEC: R25-5.08T4-FSI

MAX. AXIAL LOAD(kgf)	LUBRICATION	
MAX. ROTATIONAL SPEED (rpm)	SPACE BALL	
DN VALUE	EI TYPE ASSEMBLY METHOD	
MAX. FEED RATE (m/min)	CUSTOMER DRAWING NO.	
ACCELERATION (m/sec ²)	CUSTOMER MC TYPE	
SUPPORT METHOD	CUSTOMER AXIAL TYPE	

UNCHAMFERED USE <input type="checkbox"/> R0.5 <input checked="" type="checkbox"/> R1 <input type="checkbox"/> R ROUGH M/C/FIN M/C/GI GRD 25c 6.3a 0.4a ±EL T E300: ~	UNTOL DIMN mm UP TO 6 30 120 300 600 1200 2400 2400 ±0.1 ±0.2 ±0.3 ±0.4 ±0.5 ±0.8 ±1.0 ±1.5	MATA SH: ROLLED DATE 2007.07.16 INT: SNCM220/SCM415 DWG JANET THREAD BALL TRACK APPD MICHELLE HRC 56 ~ 62 PROCESS NO. G
CUSTR HIWIN® BALLSCREWS		DWG.NO. A114ILA3

*BREAK SHARP EDGE UNLESS OTHER SPECIFIED.
*未畫倒角者以R0.5MAX

● THREAD END ALLOWS ABOVE LENGTH OUT OF HARDNESS TOLERANCE

2007.07.16	MOD Δ	MICHELLE
DATE	MODIFICATION	APPROVED

* PLEASE IGNORE CHINESE CHARACTERS WHICH ARE FOR OUR REFERENCE ONLY.