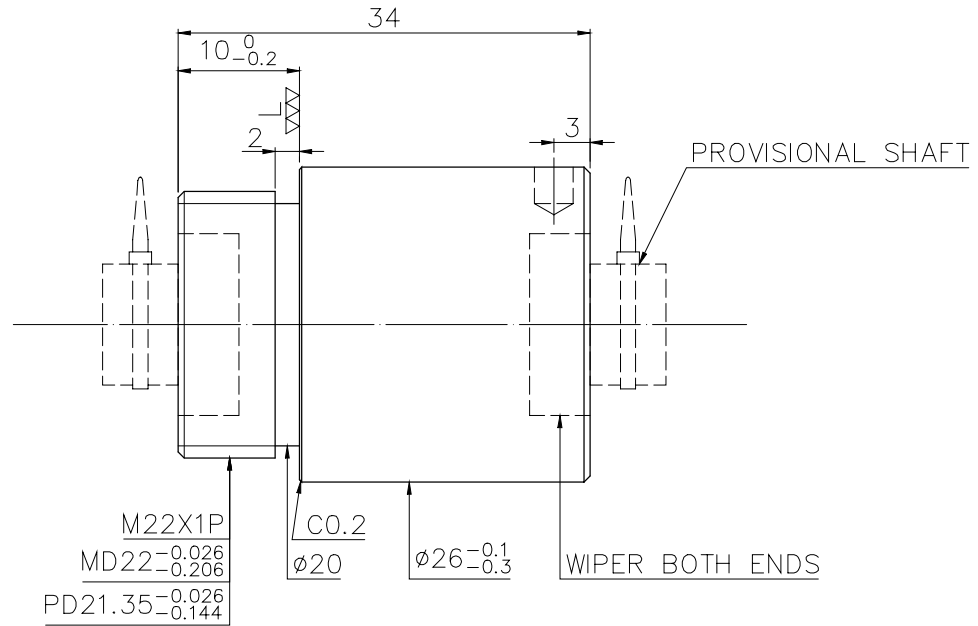
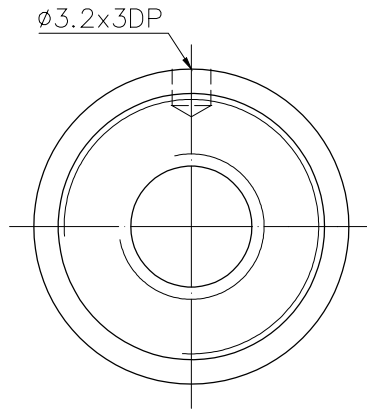


1
A114ISB5

2 Released by HIWIN design group.

3
4
6
G
▽ (▽▽)



PRELOAD(kgf)	~
R.D.	~
S.F. (kgf)	~
DRAG TORQUE(kgf-cm)	~
DIRECTION OF TURN	R
P.C. DIA.	10.2

SPEC:R10-4T3-RS1

MAX. AXIAL LOAD(kgf)	LUBRICATION	PRELOAD(kgf)	~
MAX. ROTATIONAL SPEED (rpm)	SPACE BALL	R.D.	~
DN VALUE	EI TYPE ASSEMBLY METHOD	S.F. (kgf)	~
MAX. FEED RATE (m/min)	CUSTOMER DRAWING NO.	DRAG TORQUE(kgf-cm)	~
ACCELERATION (m/sec ²)	CUSTOMER MC TYPE	DIRECTION OF TURN	R
SUPPORT METHOD	CUSTOMER AXIAL TYPE	P.C. DIA.	10.2
		BALL DIA.	2.381
		BACKLASH	
		CIRCUIT	3
		LEAD ANGLE	7.12
		DYNAMIC (kgf)	281
		STATIC (kgf)	423
		LEAD	4

THREAD LENGTH	UNCHAMFERED USE <input type="checkbox"/> R0.5 <input checked="" type="checkbox"/> R1 <input type="checkbox"/> R	MAT.	SH:ROLLED	DATE	2008.05.16
	ROUGH W/C FIN. W/C GRD. <input type="checkbox"/> 250 <input type="checkbox"/> 6.3 <input type="checkbox"/> 0.4 <input type="checkbox"/> 0.2	SCALE	NT:SNCM220/Equivalent	DWG	Penny
	NORMAL TOLERANCE mm	1: X	THREAD BALL TRACK	APPD	Michelle
	UP 16 30 120 300 600 1200 2400 OVER		HRC 56 ~ 62	PROCESS NO.	G
	±0.1 ±0.2 ±0.3 ±0.4 ±0.5 ±0.8 ±1.0 ±1.5		CUSTR		
			DWG.NO.		A114ISB5

*BREAK SHARP EDGE UNLESS OTHER SPECIFIED.
*未畫倒角者以R0.5MAX
● THREAD END ALLOWS ABOVE LENGTH OUT OF HARDNESS TOLERANCE

2008.05.16	MOD.	Michelle
DATE	MODIFICATION	APPROVED

* PLEASE IGNORE CHINESE CHARACTERS WHICH ARE FOR OUR REFERENCE ONLY.