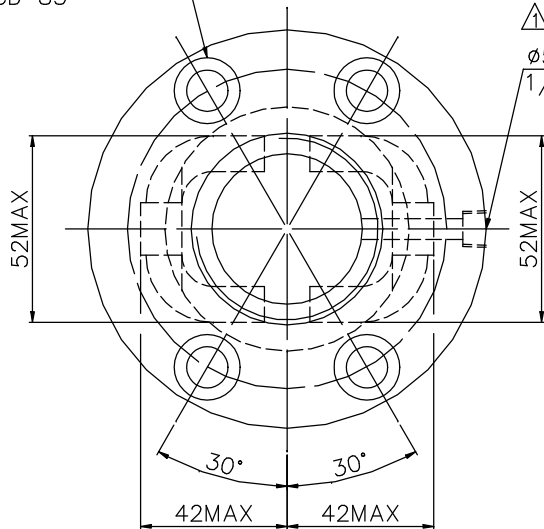


1
A119K9A2

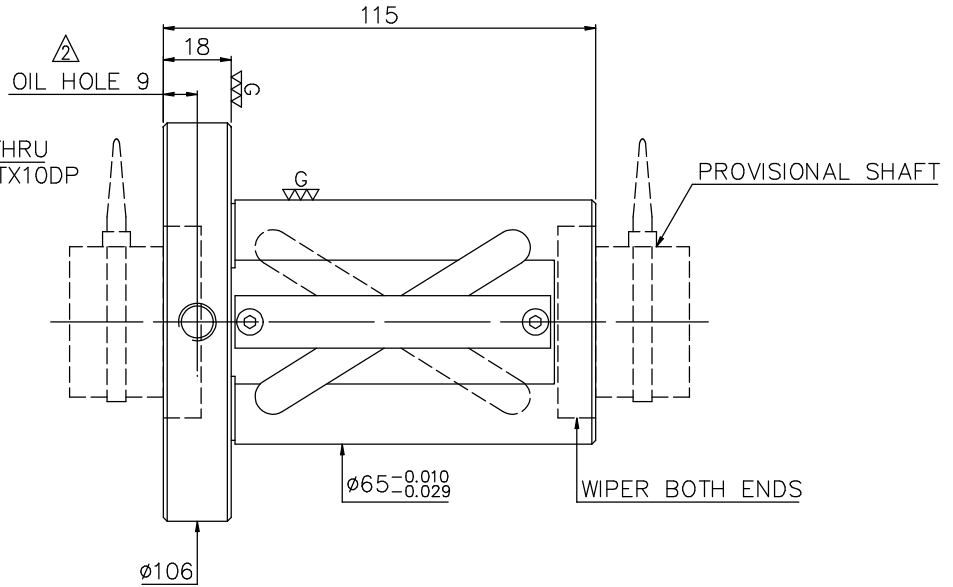
2 Released by HIWIN design group.

3
4 ∇ (∇)^G

4- ϕ 11 THRU, ϕ 17.5x11DP
BCD 85



ϕ 5.5 THRU
1/8PTX10DP



PRELOAD (kgf)	~
R.D.	~
S.F. (kgf)	~
DRAG TORQUE (kgf-cm)	~
DIRECTION OF TURN	R
P.C. DIA.	41.9
BALL DIA.	6.35

SPEC: 4R40-40A2-DFSV

MAX. AXIAL LOAD (kgf)		LUBRICATION		PRELOAD (kgf)	~
MAX. ROTATIONAL SPEED (rpm)		SPACE BALL		R.D.	~
DN VALUE		EI TYPE ASSEMBLY METHOD		S.F. (kgf)	~
MAX. FEED RATE (m/min)		CUSTOMER DRAWING NO.		DRAG TORQUE (kgf-cm)	~
ACCELERATION (m/sec ²)		CUSTOMER MIC TYPE		DIRECTION OF TURN	R
SUPPORT METHOD		CUSTOMER AXIAL TYPE		P.C. DIA.	41.9
				BALL DIA.	6.35
				BACKLASH	
				CIRCUIT	1.5*2
				LEAD ANGLE	16.9
				DYNAMIC (kgf)	2805
				STATIC (kgf)	7221
				LEAD /PITCH	40/10

	<input type="checkbox"/> UNCHAMFERED USE <input type="checkbox"/> R0.5 <input checked="" type="checkbox"/> R1 <input type="checkbox"/> R	<input type="checkbox"/> SH: ROLLED	DATE 2008.06.12
	SCALE 1: X	MAT. NT: SNCM220/Equivalent	DWG Eric
NORMAL TOLERANCE mm	UP TO 6 30 120 300 600 1200 2400 OVER	THREAD BALL TRACK APPD Kenny	PROCESS NO. G
e300: ~ E: ~	HIWIN BALLSCREWS	CUSTR	DWG.NO. A119K9A2

*BREAK SHARP EDGE UNLESS OTHER SPECIFIED.
*??????R0.5MAX
● THREAD END ALLOWS ABOVE LENGTH OUT OF HARDNESS TOLERANCE

2008.06.12	MOD. ∇ ~ ∇	Kenny
DATE	MODIFICATION	APPROVED

* PLEASE IGNORE CHINESE CHARACTERS WHICH ARE FOR OUR REFERENCE ONLY.