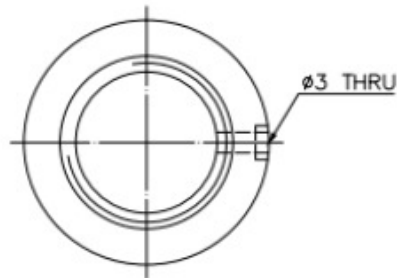
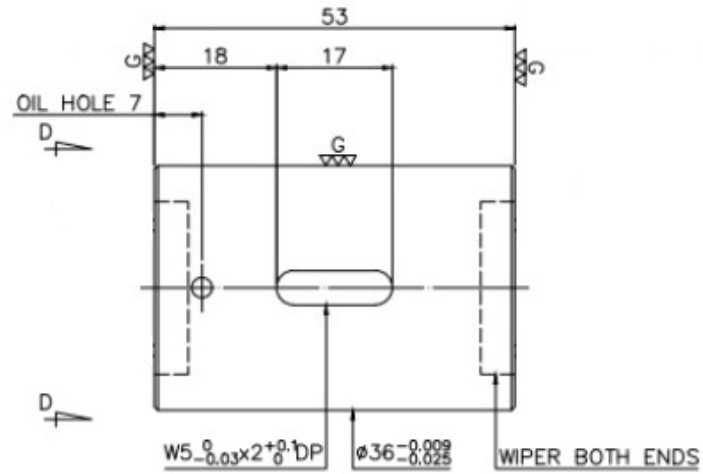


More Confidential

6  
▽ (▽▽)



D-D VIEW



PRELOAD(kgf)	
R.D.	
S.F. (kgf)	
DRAG TORQUE(kgf-cm)	
DIRECTION OF TURN	R
P.C. DIA.	20.2
BALL DIA.	3.175
BACKLASH	0.03 MAX.
CIRCUIT	4
LEAD ANGLE	4.51
DYNAMIC (kgf)	938
STATIC (kgf)	1993
LEAD	5

SPBC: R20-5T4-RS1

MAX. AXIAL LOAD(kgf)		LUBRICATION	
MIN. ROTATIONAL SPEED (rpm)		SPACE BALL	
DN VALUE		EI TYPE ASSEMBLY METHOD	
MAX. FEED RATE(m/min)		CUSTOMER DRAWING NO.	
ACCELERATION(m/sec <sup>2</sup> )		CUSTOMER MC TYPE	
SUPPORT METHOD		CUSTOMER AXIAL TYPE	

<p>THREAD LENGTH</p> <p>1.5mm</p>	UNCHAMFERED USE <input checked="" type="checkbox"/> CO.5 <input type="checkbox"/> C1 <input type="checkbox"/> C	GRD <input type="checkbox"/> 25° <input type="checkbox"/> 30° <input type="checkbox"/> 45° <input type="checkbox"/> 60° <input type="checkbox"/> 75° <input type="checkbox"/> 90°	SCALE 1: X
	MAT. SH: CF53/Equivalent DATE 2015.12.17 NT: SNCM220/Equivalent DWG Shower	THREAD BALL TRACK CHK Eila HRC 56 ~ 62 APPD Nick	

\*BREAK SHARP EDGE UNLESS OTHER SPECIFIED  
\*未量前向除去毛刺 (CO.2MAX)

● THREAD END ALLOWS ABOVE LENGTH OUT OF HARDNESS TOLERANCE

1/300ep  
ep:

HIWIN BALLSCREWS

DATE	MODIFICATION	APPROVED

\* PLEASE IGNORE CHINESE CHARACTERS WHICH ARE FOR OUR REFERENCE ONLY.

CUSTR	
DWG.NO.	C-HIW-17-90