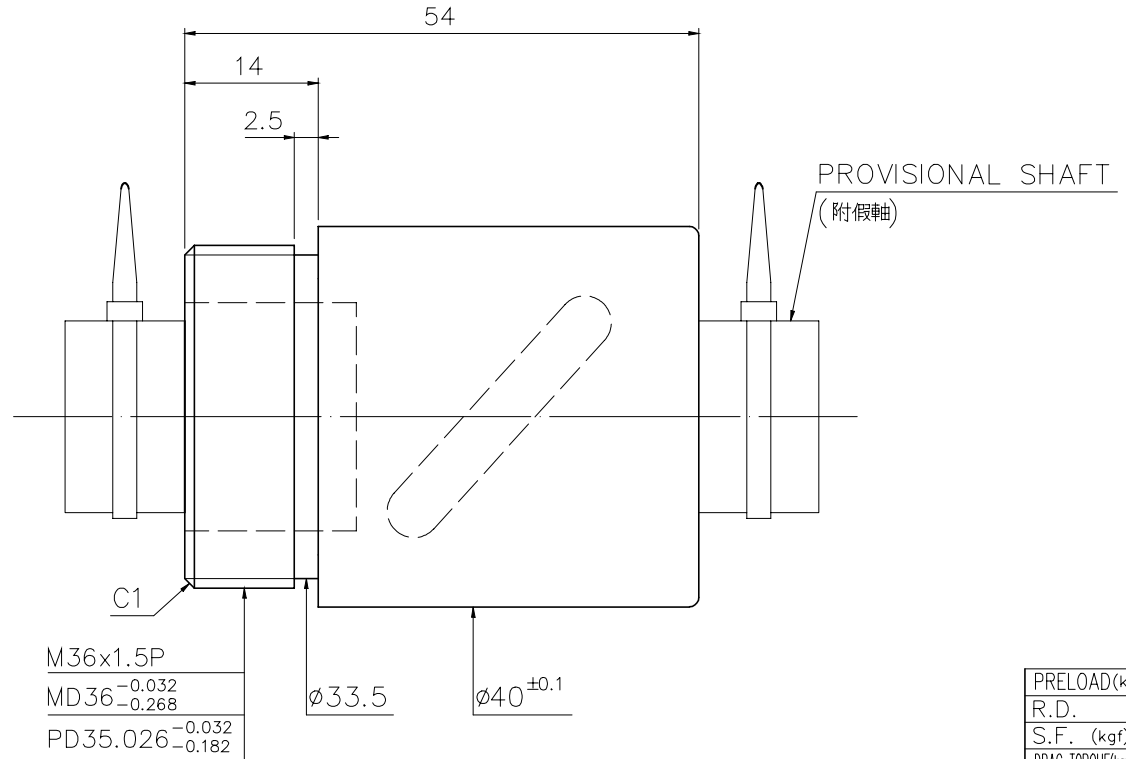
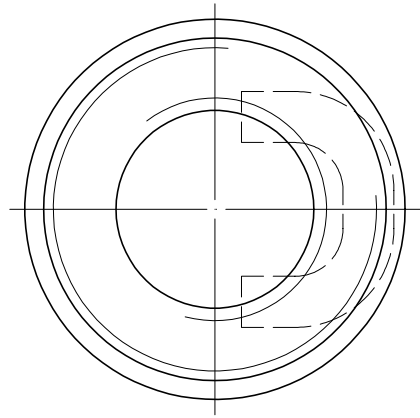


1
A10CL6A2

2
Released by HIWIN design group.

3
4
5
6
7
8
9
▽ (▽▽) $\frac{G}{\text{▽▽}}$

NOTE: THREAD MUST BE GROUND.
(螺紋須經研磨)



M36x1.5P
MD36 $\begin{matrix} -0.032 \\ -0.268 \end{matrix}$
PD35.026 $\begin{matrix} -0.032 \\ -0.182 \end{matrix}$

φ33.5 φ40 ± 0.1

PRELOAD(kgf)	~
R.D.	~
S.F. (kgf)	~
DRAG TORQUE(kgf-cm)	~
DIRECTION OF TURN	R
P.C. DIA.	20.2
BALL DIA.	3.175
BACKLASH Δ	0.03MAX
CIRCUIT	3.5*1
LEAD ANGLE	4.51
DYNAMIC Δ (kgf)	1001
STATIC Δ (kgf)	2149
LEAD	5

SPEC:R20-5C1-RSB

MAX. AXIAL LOAD(kgf)	LUBRICATION	SPACE BALL
MAX. ROTATIONAL SPEED (rpm)	EI TYPE ASSEMBLY METHOD	
DN VALUE	CUSTOMER DRAWING NO.	721-002
MAX. FEED RATE(m/min)	CUSTOMER MC TYPE	96-009
ACCELERATION(m/sec ²)	CUSTOMER AXIAL TYPE	X
SUPPORT METHOD		

Δ
NOTE: Steel ball tolerance must be in the range of -0.0025, -0.010
(鋼珠公差限用-0.0025, -0.010)

UNCHAMFERED USE <input type="checkbox"/> R0.5 <input checked="" type="checkbox"/> R1 <input type="checkbox"/> R	SCALE	MAT.	SH: ROLLED	DATE	2008.10.15
ROUGH M/C FIN M/C GRD	1: X	NT: SNCM220/Equivalent	DWG	Penny	
25 σ 6.3 σ 0.4 σ		THREAD BALL TRACK	APPD	Michelle	
▽		HRC 56 ~ 62	PROCESS NO.	G	
NORMAL TOLERANCE mm		CUSTR	H-CHICAGO		
UP 6 30 120 300 600 1200 2400 OVER		DWG.NO.	A10CL6A2		
±0.1 ±0.2 ±0.3 ±0.4 ±0.5 ±0.8 ±1.0 ±1.5					

*BREAK SHARP EDGE UNLESS OTHER SPECIFIED.
*未畫倒角者以R0.5MAX
● THREAD END ALLOWS ABOVE LENGTH OUT OF HARDNESS TOLERANCE

2008.10.15	MOD. Δ ~ Δ	Michelle
DATE	MODIFICATION	APPROVED

* PLEASE IGNORE CHINESE CHARACTERS WHICH ARE FOR OUR REFERENCE ONLY.

HIWIN® BALLSCREWS