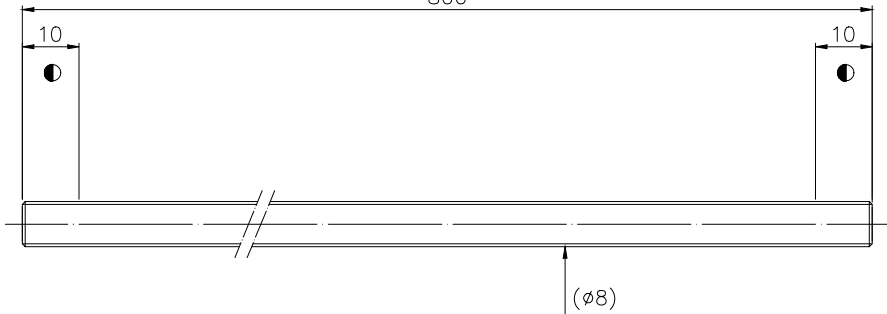


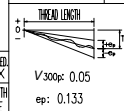
4  
5  
6  
7  
8  
9  
800



PRELOAD(kgf)	~
R.D.	6.136
S.F. (kgf)	~
DRAG TORQUE(Ngf-cm)	~
DIRECTION OF TURN	R
P.C. DIA.	8.2
BALL DIA.	2
BACKLASH	~
CIRCUIT	~
LEAD ANGLE	5.54
DYNAMIC (kgf)	~
STATIC (kgf)	~
LEAD	2.5

SPEC:R8-2.5-800-800-0.05

MAX. AXIAL LOAD(kgf)	LUBRICATION	
MAX. ROTATIONAL SPEED (rpm)	SPACE BALL	
DN1 VALUE	FT TYPE ASSEMBLY METHOD	
MAX. FEED RATE(m/min)	CUSTOMER DRAWING NO.	
ACCELERATION (m/sec <sup>2</sup> )	CUSTOMER MC TYPE	
SUPPORT METHOD	CUSTOMER AXIAL TYPE	



UNCHAMFERED USE	<input type="checkbox"/> CO.5	<input checked="" type="checkbox"/> C1	<input type="checkbox"/> C					
ROUGH MACHINING	<input type="checkbox"/> GSD	<input type="checkbox"/> GSD	<input type="checkbox"/> GSD					
SCALE	1: X							
NORMAL TOLERANCE mm								
UP TO	6	120	300	600	1200	2400	2400	
	±0.1	±0.2	±0.3	±0.4	±0.5	±0.8	±1.0	±1.5

MAT.	Sh: CF53/Equivalent	DATE	2010.04.02
THREAD	HRC 56 ~ 62	DWG	Rita
BALL TRACK		APPD	Cody
PROCESS NO.			G
CUSTR	HIWIN STD.		
DWG.NO.	A10EE9A2		

\*BREAK SHARP EDGE UNLESS OTHER SPECIFIED  
\*未量破角者以C0.2MAX  
● THREAD END ALONGS ABOVE LENGTH  
OUT OF HARDNESS TOLERANCE

2010.04.02	MOD. A	Cody
DATE	MODIFICATION	APPROVED

\* PLEASE IGNORE CHINESE CHARACTERS WHICH ARE FOR OUR REFERENCE ONLY.

HIWIN BALLSCREWS