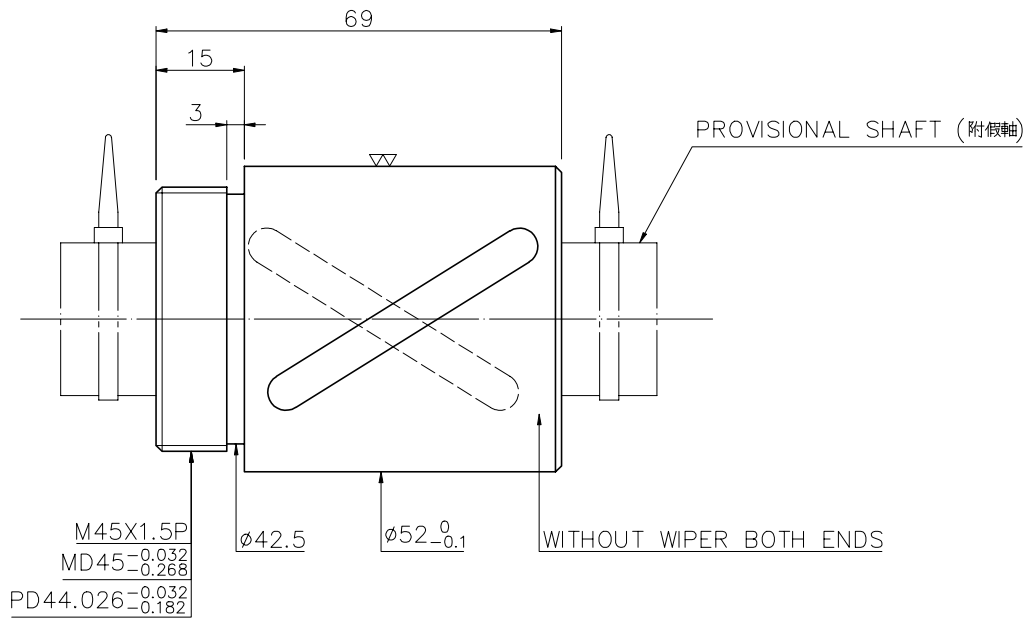
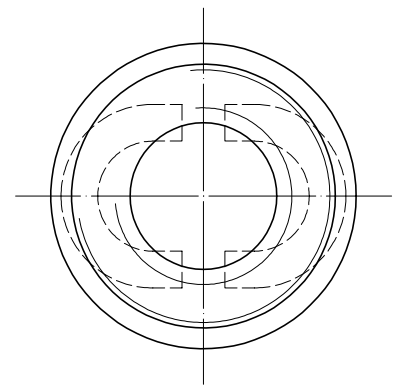


1
A10RBPA2

2
Released by HIWIN design group.

4
▽ (▽▽)

A
B
C
D
E
F
G



△ NOTE: Steel ball tolerance must be in the range of $-0.0025, -0.010$
(鋼珠公差限用 $-0.0025, -0.010$)

SPEC: 2R25-25A2-DRSB

MAX. AXIAL LOAD (kgf)	LUBRICATION	PRELOAD (kgf)	~
MAX. ROTATIONAL SPEED (rpm)	SPACE BALL	R.D.	~
DN VALUE	E1 TYPE ASSEMBLY METHOD	S.F. (kgf)	~
MAX. FEED RATE (m/min)	CUSTOMER DRAWING NO.	DRAG TORQUE (kgf-cm)	~
ACCELERATION (m/sec ²)	CUSTOMER MC TYPE	DIRECTION OF TURN	R
SUPPORT METHOD	CUSTOMER AXIAL TYPE	P.C. DIA.	26.03
		BALL DIA.	3.969
		BACKLASH △	0.03MAX
		CIRCUIT	1.5*2
		LEAD ANGLE	17
		DYNAMIC △ (kgf)	1174
		STATIC △ (kgf)	2729
		LEAD/PITCH	25/12.5

	UNCHAMFERED USE <input type="checkbox"/> R0.5 <input checked="" type="checkbox"/> R1 <input type="checkbox"/> R	MAT. SH: ROLLED DATE 2008.10.15 NT: SNCM220/Equivalent DWG Penny THREAD BALL TRACK APPD Michelle HRC 56 ~ 62 PROCESS NO. G CUSTR. H-CHICAGO DWG.NO. A10RBPA2
	SCALE 1: X NORMAL TOLERANCE mm UP TO 6 30 120 300 600 1200 2400 OVER ±0.1 ±0.2 ±0.3 ±0.4 ±0.5 ±0.8 ±1.0 ±1.5	

*BREAK SHARP EDGE UNLESS OTHER SPECIFIED.
*未畫倒角者以R0.5MAX
● THREAD END ALLOWS ABOVE LENGTH OUT OF HARDNESS TOLERANCE

2008.10.15	MOD. △~△	Michelle
DATE	MODIFICATION	APPROVED

* PLEASE IGNORE CHINESE CHARACTERS WHICH ARE FOR OUR REFERENCE ONLY.

HIWIN® BALLSCREWS