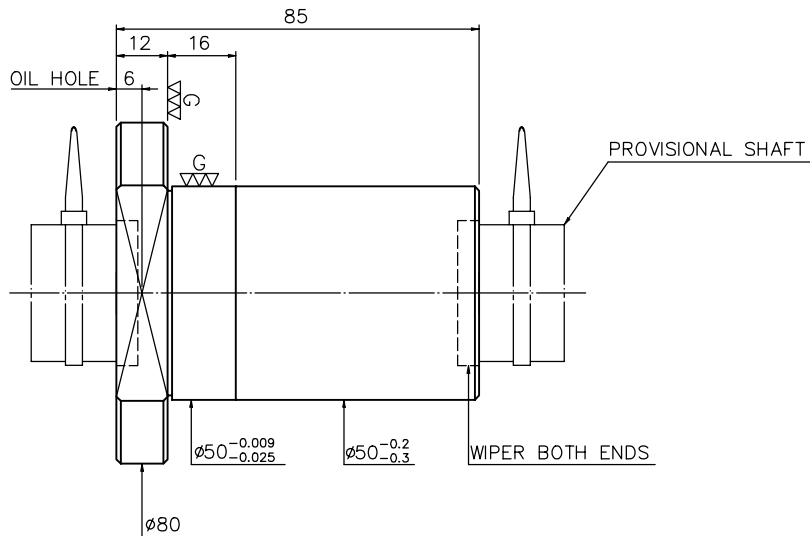
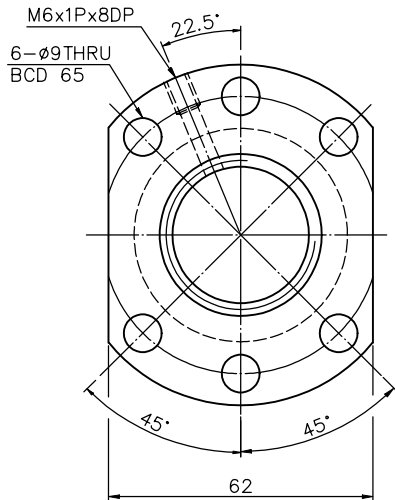


1
A1158TA1

2
Released by HIWIN design group.

4
▽ (▽▽)



NOTE: 1. Steel ball tolerance must be in the range of $-0.0025, -0.015$
2. DIN 69051 part 5 form B TYPE 1.

SPEC: R32-10T4-FS1

MAX. AXIAL LOAD (kgf)	LUBRICATION	PRELOAD (kgf)	
MAX. ROTATIONAL SPEED (rpm)	SPACE BALL	R.D	
DN VALUE	EI TYPE ASSEMBLY METHOD	S.F (kgf)	
MAX. FEED RATE (m/min)	CUSTOMER DRAWING NO.	DRAG TORQUE (kgf-cm)	
ACCELERATION (m/sec ²)	CUSTOMER MC TYPE	DIRECTION OF TURN	R.H
SUPPORT METHOD	CUSTOMER AXIAL TYPE	PC DIA.	34.26
		BALL DIA.	6.35
		BACKLASH	0.03MAX
		CIRCUIT	4
		LEAD ANGLE	5.31°
		DYNAMIC (kgf)	2900
		STATIC (kgf)	6404
		LEAD	10

THREAD LENGTH	LUNCHAMFERED USE <input type="checkbox"/> R0.5 <input checked="" type="checkbox"/> R1 <input type="checkbox"/> R	SCALE	1: X
ROUGH M/C/FIN M/C	GRD	MATERIAL	SH: ROLLED DATE 2007.07.17
25° 6.3° 0.4°	▽▽	NT: SNCM220/SCM415	DWG JANET
UNTOL DIMN mm	UP TO 6 30 120 300 600 1200 2400	THREAD BALL TRACK APPD	MICHELLE
±0.1 ±0.2 ±0.3 ±0.4 ±0.5 ±0.8 ±1.0 ±1.5	TOVER 1200 2400	HRC 56 ~ 62	PROCESS NO. G
E300: _____	HIWIN® BALLSCREWS	CUSTR	H-CHICAGO
		DWG.NO.	A1158TA1

*BREAK SHARP EDGE UNLESS OTHER SPECIFIED.
*未畫倒角者以R0.5MAX
● THREAD END ALLOWS ABOVE LENGTH OUT OF HARDNESS TOLERANCE

* PLEASE IGNORE CHINESE CHARACTERS WHICH ARE FOR OUR REFERENCE ONLY.

DATE	MODIFICATION	APPROVED