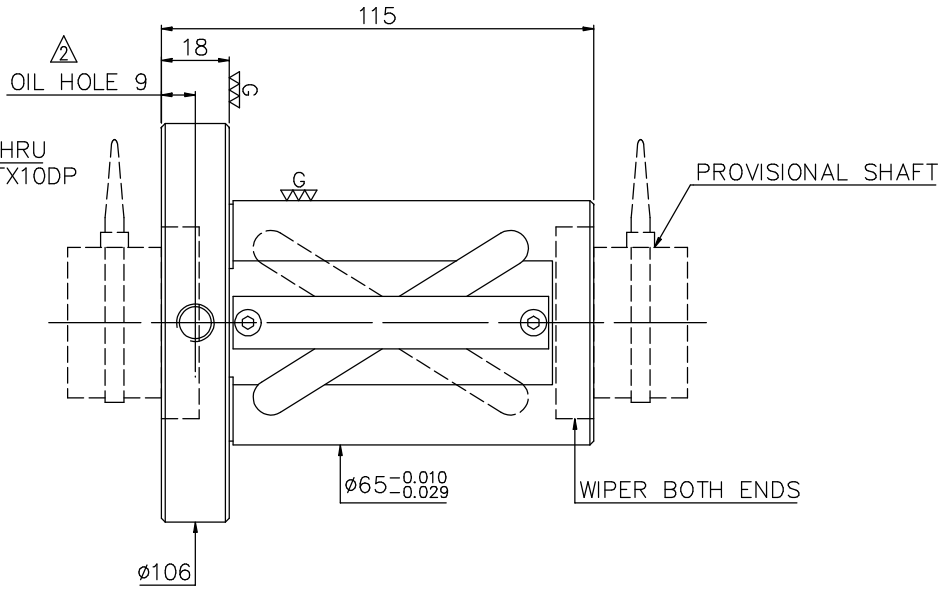
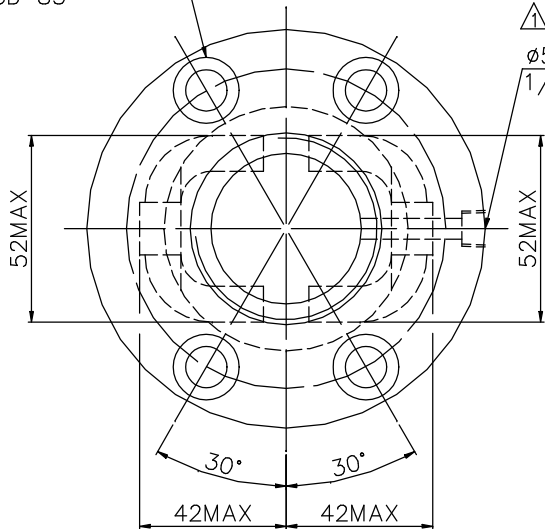


4-∅11THRU,∅17.5x11DP
BCD 85



NOTE: Steel ball tolerance must be in range of "-0.0025, -0.01".
(???? "-0.0025? -0.01")

SPEC: 4R40-40A2-DFS

MAX. AXIAL LOAD (kgf)	LUBRICATION	PRELOAD (kgf)	~
MAX. ROTATIONAL SPEED (rpm)	SPACE BALL	R.D.	~
DN VALUE	E1 TYPE ASSEMBLY METHOD	S.F. (kgf)	~
MAX. FEED RATE (m/min)	CUSTOMER DRAWING NO.	DRAG TORQUE (kgf-cm)	~
ACCELERATION (m/sec ²)	CUSTOMER MC TYPE	DIRECTION OF TURN	R
SUPPORT METHOD	CUSTOMER AXIAL TYPE	P.C. DIA.	41.9
		BALL DIA.	6.35
		BACKLASH	0.07MAX
		CIRCUIT	1.5*2
		LEAD ANGLE	16.9
		DYNAMIC (kgf)	2805
		STATIC (kgf)	7221
		LEAD /PITCH	40/10

	UNCHAMFERED USE <input type="checkbox"/> R0.5 <input checked="" type="checkbox"/> R1 <input type="checkbox"/> R ROUGH M/C FIN M/C GRD 25° 6.3g 0.4g ∇ ∇ ∇	SCALE 1: X MAT. SH: ROLLED DATE 2008.06.12 NT: SNCM220/Equivalent DWG Eric
	NORMAL TOLERANCE mm UP 6 15 30 120 300 600 1200 2400 OVER TO ±0.1 ±0.2 ±0.3 ±0.4 ±0.5 ±0.8 ±1.0 ±1.5	THREAD BALL TRACK APPD Kenny HRC 56 ~ 62 PROCESS NO. G
e300: ~ E: ~	HIWIN® BALLSCREWS	CUSTR H-CHICAGO DWG.NO. A119K9A2

*BREAK SHARP EDGE UNLESS OTHER SPECIFIED.
*?????RO.5MAX
● THREAD END ALLOWS ABOVE LENGTH OUT OF HARDNESS TOLERANCE.

* PLEASE IGNORE CHINESE CHARACTERS WHICH ARE FOR OUR REFERENCE ONLY.

2008.06.12	MOD. A~ A	Kenny
DATE	MODIFICATION	APPROVED