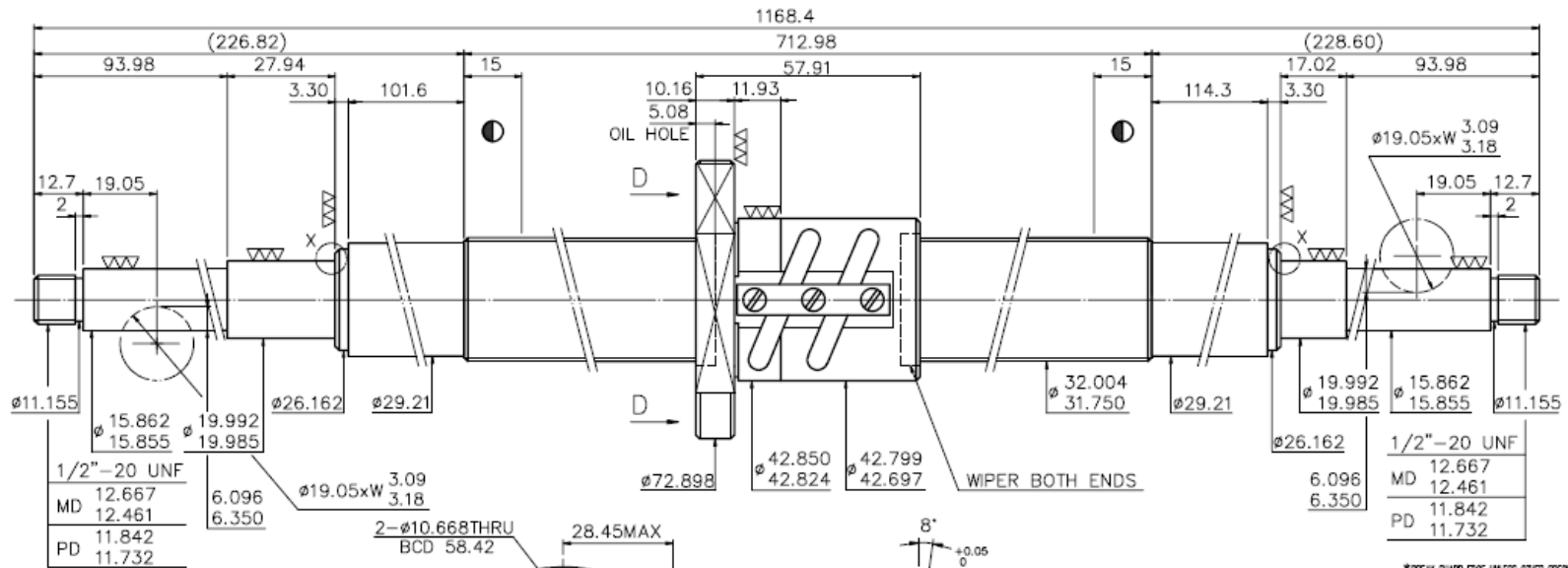
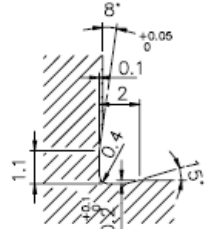
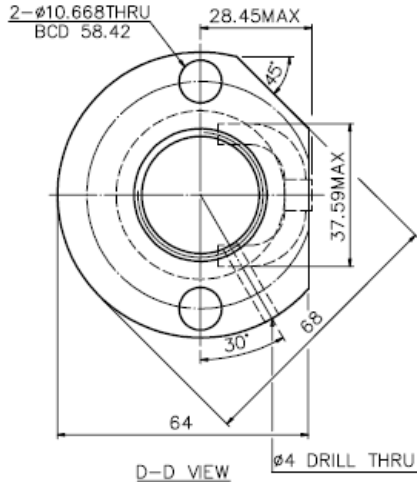


A10CB8A1 Released by HIWIN design group.



1/2"-20 UNF
MD 12.667
PD 12.461
11.842
11.732

6.096	φ19.05xW	3.09	3.18
6.350			



F0.4X0.2DIN509

X DETAIL

SPEC: R32-5.08B2-FSV-712.98-1168.4-0.05

CUSTOMER DRAWING NO.	
MC TYPE	
RAW TYPE	

UNHAMPED USE	<input type="checkbox"/> C0.5	<input checked="" type="checkbox"/> C1	<input type="checkbox"/> C				
SCALE	1: X						
UNTOL DIMN mm							
UP	16	30	120	300	600	1200	1800
TD	±0.1	±0.2	±0.3	±0.4	±0.5	±0.6	±1.0
THREAD BALL TRACK	HRC 56 ~ 62			THREAD END ALLOWS ABOVE LENGTH OUT OF HARDNESS TOLERANCE			

CUSTR	H-USA	DATE	6. 5. 99
TITLE	BALL SCREW	DWG	
MATERIAL	SH: CF5.3	CHK	
DWG NO.	A10CB8A1	APPD	
PROCESS NO.	E		

\*BREAK SHARP EDGE UNLESS OTHER SPECIFIED

PRELOAD(kgf)	
R.D	29.124
S.F (kgf)	
DRAG TORQUE(Nf-cm)	
LUBRICATION	OIL
DIRECTION OF TURN	RIGHT
PC DIA.	32.4
BALL DIA.	3.175
BALL TRACK FORM	GOTHIC
BACKLASH	0.07MAX
CIRCUIT	2.5*2
LEAD ANGLE	2.86°
DYNAMIC (kgf)	1702
STATIC (kgf)	5098
LEAD	5.08

DATE	MODIFICATION	APPROVED

\* PLEASE IGNORE CHINESE CHARACTERS WHICH ARE FOR OUR REFERENCE ONLY.

HIWIN® BALLSCREWS