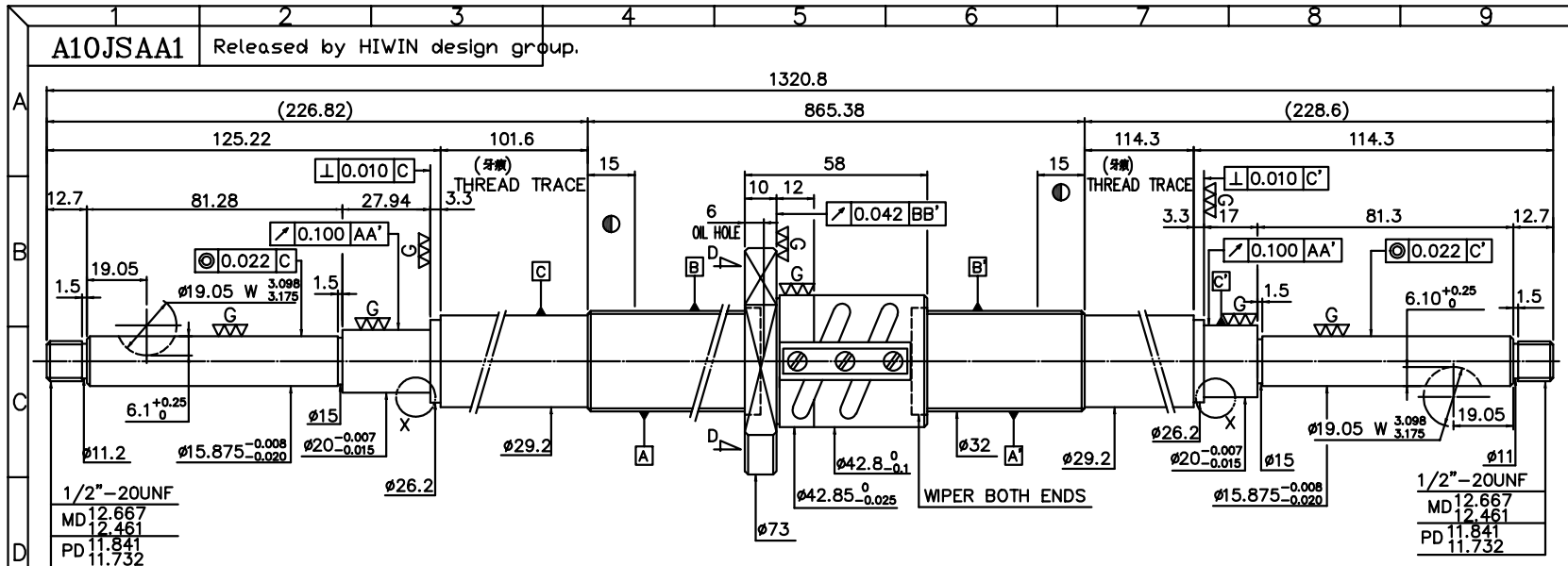


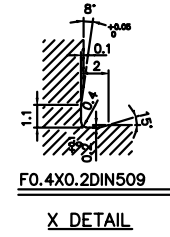
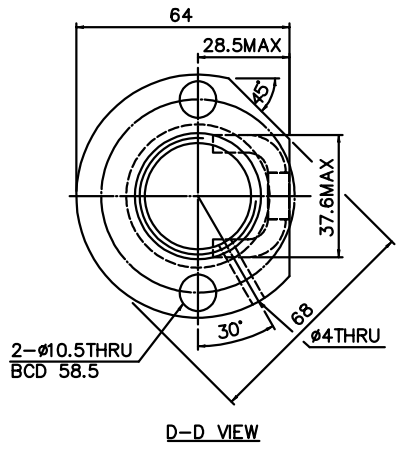
A10JSAA1

Released by HIWIN design group.



1/2"-20UNF
MD 12.667
PD 12.461
PD 11.841
PD 11.732

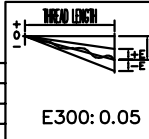
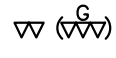
1/2"-20UNF
MD 12.667
PD 12.461
PD 11.841
PD 11.732



- 1. MAX AXIAL LOAD: _____ kgf
- 2. MAX BALLSCREW ROTATIONAL SPEED: _____ rpm
- DN VALUE: _____
- ACCELERATION = _____ m/sec²
- 3. MAX FEED RATE: _____ m/min

PRELOAD (kgf)	113
R.D	29.124
S.F (kgf)	0.04~1.36
DRAG TORQUE (kg-cm)	0.10~4.00
LUBRICATION	
DIRECTION OF TURN	R.H
PC DIA.	32.4
BALL DIA.	3.175
BACKLASH	0
CIRCUT	2.5*2
LEAD ANGLE	2.86°
DYNAMIC (kgf)	1702
STATIC (kgf)	5098
LEAD	5.08

SPEC: R32-5.08B2-FSV-865.38-1320.8-0.05



UNCHAMFERED USE	CIR0.5	R1	CIR				
ROUGH MACHINING USE	CIR0.5	R1	CIR				
SCALE	1:X						
UNTOL DIMIN	mm						
TP	16	30	120	300	600	1200	10000
TD	±0.1	±0.2	±0.3	±0.4	±0.5	±0.8	±1.0

MATERIAL	SH: CF53	DATE	11.28.01
	INT: SNCM220	DWG	
THREAD BALL TRACK	HRC 56 ~ 62	APPD	
CUSTOMER	HIWIN STD.	PROCESS NO	G I E
DWG. NO.	A10JSAA1		

*BREAK SHARP EDGE UNLESS OTHER SPECIFIED
 *未量測角部以R0.5MAX
 D THREAD END ALLOWS ABOVE LENGTH INC. TYPE
 OUT OF HARDNESS TOLERANCE (ANIL TYPE)

DATE	MODIFICATION	APPROVED

* PLEASE IGNORE CHINESE CHARACTERS WHICH ARE FOR OUR REFERENCE ONLY.