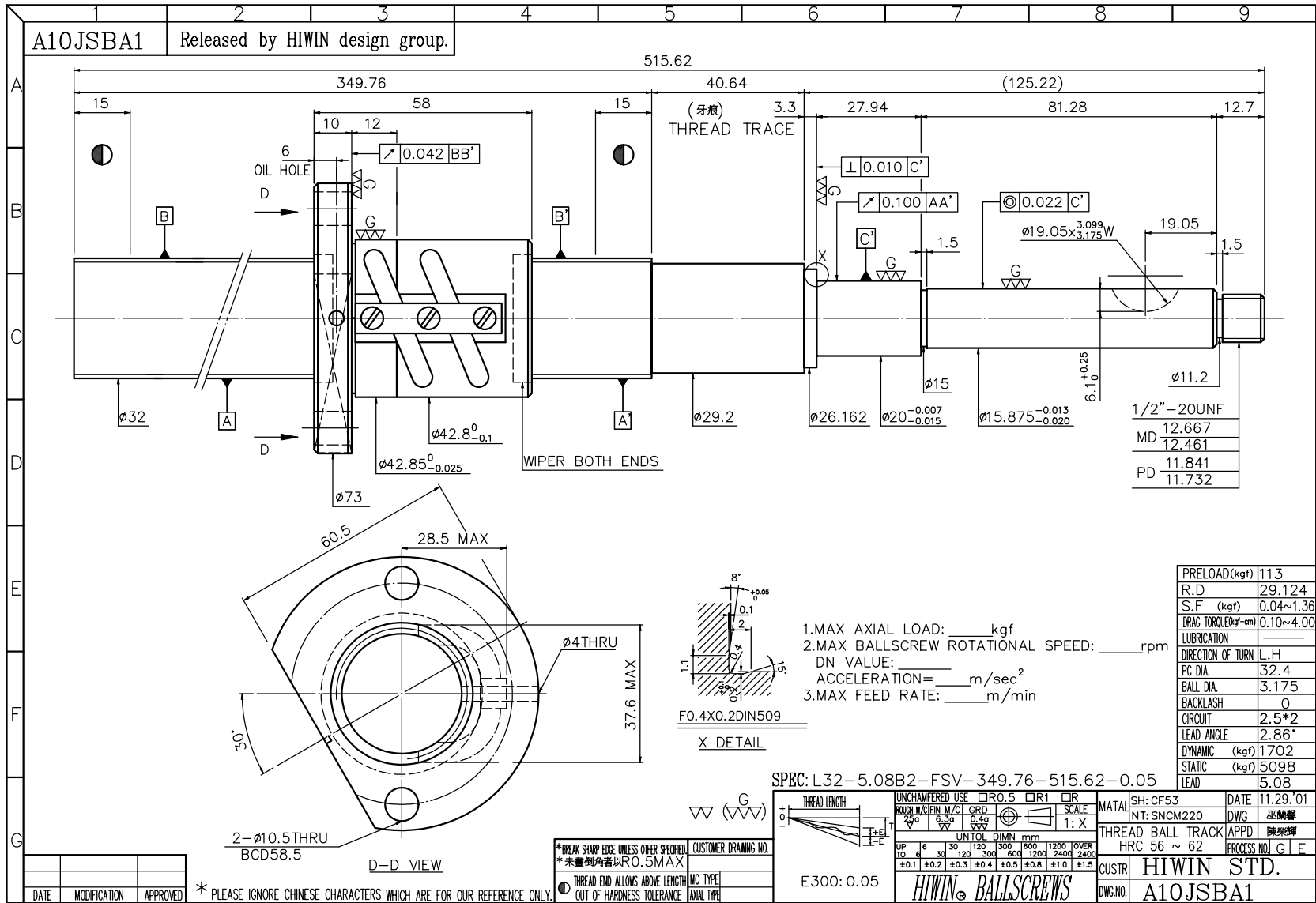
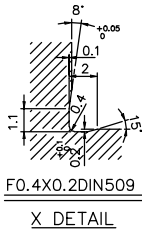


A10JSBA1 Released by HIWIN design group.

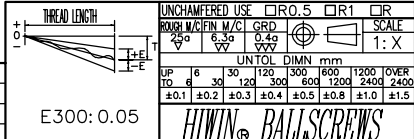


PRELOAD (kgf)	113
R.D	29.124
S.F (kgf)	0.04~1.36
DRAG TORQUE (kg-cm)	0.10~4.00
LUBRICATION	
DIRECTION OF TURN	L.H
PC DIA.	32.4
BALL DIA.	3.175
BACKLASH	0
CIRCUIT	2.5*2
LEAD ANGLE	2.86°
DYNAMIC (kgf)	1702
STATIC (kgf)	5098
LEAD	5.08

- 1. MAX AXIAL LOAD: \_\_\_\_\_ kgf
- 2. MAX BALLSCREW ROTATIONAL SPEED: \_\_\_\_\_ rpm
- DN VALUE: \_\_\_\_\_
- ACCELERATION = \_\_\_\_\_ m/sec<sup>2</sup>
- 3. MAX FEED RATE: \_\_\_\_\_ m/min



SPEC: L32-5.08B2-FSV-349.76-515.62-0.05



\*BREAK SHARP EDGE UNLESS OTHER SPECIFIED  
 \*未量倒角者以R0.5MAX  
 THREAD END ALLOWS ABOVE LENGTH  
 OUT OF HARDNESS TOLERANCE

CUSTOMER DRAWING NO.  
 MC TYPE  
 ANVL TYPE

UNCHAMFERED USE	<input type="checkbox"/> R0.5	<input type="checkbox"/> R1	<input type="checkbox"/> R	MATERIAL	SH: CF53	DATE	11.29.01
ROUGH MACHINING	<input type="checkbox"/> M/Z	<input type="checkbox"/> GRD	<input type="checkbox"/> SCALE	INT: SNCM220	DWG	邱榮輝	
UNTOL DIMN	mm	1: X		THREAD BALL TRACK	HRC	56 ~ 62	PROCESS NO
UP	6 30 120 300 600 1200 1800 2400	OVER		CUSTR	HIWIN STD.		
TO	±0.1 ±0.2 ±0.3 ±0.4 ±0.5 ±0.8 ±1.0 ±1.5			DWG.NO.	A10JSBA1		

DATE	MODIFICATION	APPROVED

\* PLEASE IGNORE CHINESE CHARACTERS WHICH ARE FOR OUR REFERENCE ONLY.