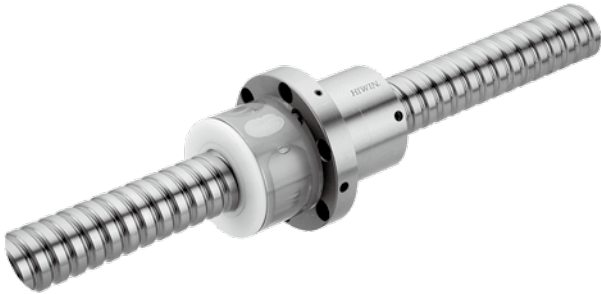


9 Multi-Solutions

9.1 E2 Self - lubricant



• Features :

• Cost savings :

The E2 series saves cost by eliminating piping joint systems, change and waste disposal, and by reducing oil purchases.

• Greatly extends the maintenance period :

The E2 series will supply proper lubrication for long periods of time extending the maintenance period.

• Easy maintenance :

The special construction of the E2 design requires no tools to replace the oil cartridge. There is no disassembly required when adding the E2 option.

• Ideal lubrication position :

The lubrication point is located inside the ball nut allowing for the lubrication to be firmly applied onto the ball tracks.

• Effortless and flexible installation :

The lubrication performs properly in every direction so there are no restrictions when installing the E2.

• Clean and environmentally friendly :

Prevents oil leakage, making the E2 the ideal solution for clean room environments.

• Interchangeable oil selection :

The replaceable oil cartridge can be refilled with any approved lubrication oil.

• Applications for special environments

The lubrication oil can be combined with grease for better results, especially in dusty, dirty, or wet environments.

• Characteristic of lubrication oil

The E2 self-lubrication cartridge is equipped with synthetic hydrocarbon based oil. The lubricate oil has a viscosity grade of ISO VG680.

The E2 is compatible with mineral, hydrocarbon, and ester based greases. The E2 can accept synthetic oils with stable characteristics. A high viscosity grade will work well in conditions where there are high and low temperatures.

The low fluid draft factor prevents excessive power consumption and deters against corrosion and rust.

A compatible lubricate oil with the same viscosity grade can also be used in the replaceable cartridge.

• Application :

- Machine tools
- Industrial machinery : printing machine, paper-processing machine, automatic machine, textile machine, cutting and grinding machines, etc.
- Electronic machinery : robots, measuring equipment, X-Y tables, etc.
- Miscellaneous: medical equipment, factory automation equipment, etc.

• Specification number :

Example: R40 - 10B2 - FSWE2 - 800 - 1000 - 0.008



HIWIN E2 code

• Specification :

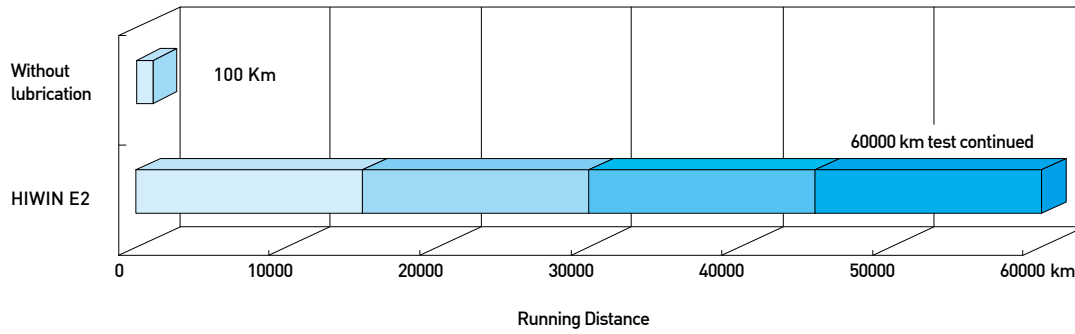
Nut type : FSV, FDV, FSW, FDW, PFDW, OFSW, DFSV, FSH

Please contact HIWIN engineers with other specification needs.

In order to get the good lubrication efficiency; please notify HIWIN engineers of the ballscrew installation direction.

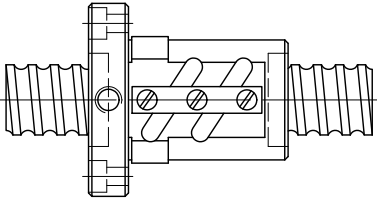
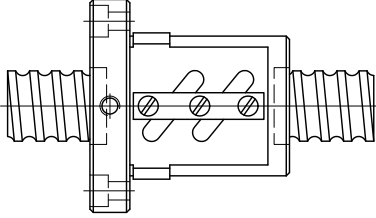
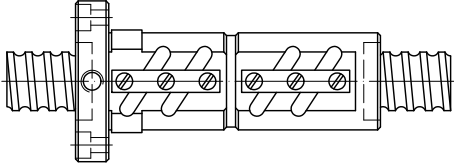
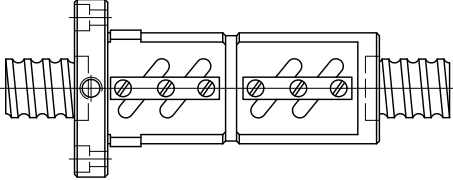
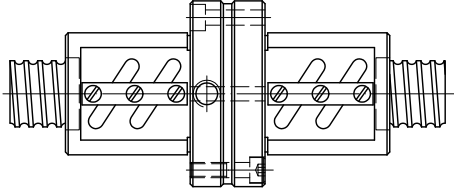
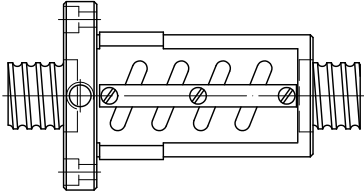
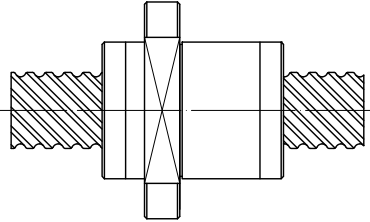
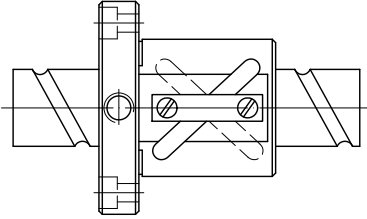
• Performance :

Test condition 1 :
specification : $\varnothing 50 \times 30$
speed : 2500 rpm (75 m/min)
stroke : 1180 mm



* Note : above test with no grease added

HIWIN E2 Precision Ground Ballscrews

General Type	
<p>FSV</p>  <p>Flange end, single nut, tube above nut diameter</p>	<p>FSW</p>  <p>Flange end, single nut, tube within nut diameter</p>
<p>FDV</p>  <p>Flange end, double nut, tube above nut diameter</p>	<p>FDW</p>  <p>Flange end, double nut, tube within nut diameter</p>
<p>PFDW</p>  <p>Flange to flange, double nut, tube within nut diameter</p>	<p>OFSW</p>  <p>Offset pitch preload, flange end, single nut, tube within nut diameter</p>
High Lead Type	
<p>FSH</p>  <p>Large lead, flange mounted, single nut, end cap</p>	<p>DFSV</p>  <p>Double start, flange end, single nut, tube above nut diameter</p>

*Different design required by the drawing approval, please contact with HIWIN engineers for the other type listed above.
(The specifications in this catalogue are subject to change without notification.)