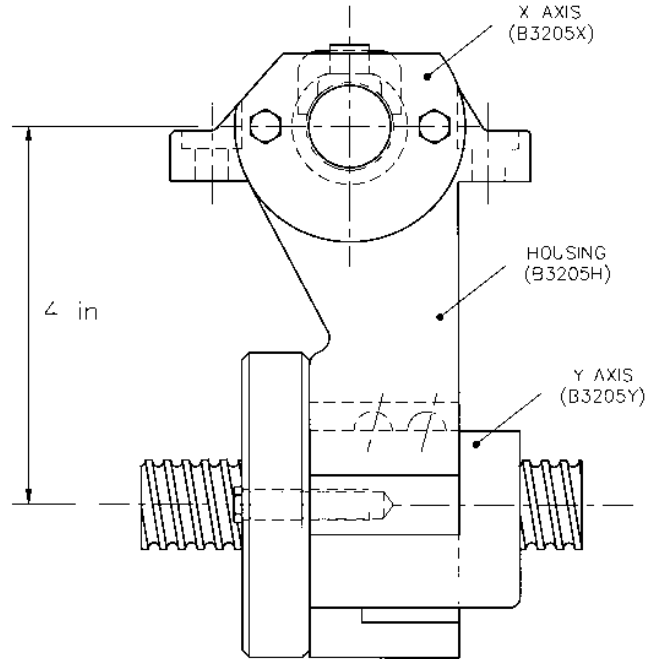


● Precision ground ballscrew set



Traverse Screw (X Axis) in

| Traverse Screw | A | B | Part Number |
|----------------|----|-------|-------------|
| 32 | 42 | 24.07 | B3205X-32 |
| 36 | 46 | 28.07 | B3205X-36 |
| 42 | 52 | 34.07 | B3205X-42 |
| 48 | 58 | 40.07 | B3205X-48 |

Crossfeed Screw (Y Axis) in

| Table Size | C | D | Part Number |
|------------|------|-------|-------------|
| 9 | 20.3 | 13.77 | B3205Y- 9 |
| 12 | 23.3 | 16.77 | B3205Y-12 |
| 16 | 27.3 | 20.77 | B3205Y-16 |

| | |
|---------------------------------------|------------------------|
| P.C. Dia. | 1.28" |
| Ball Dia. | 0.125" |
| Lead Angle | 2.84° |
| Circuits | 2.5 × 2 |
| Lead | 5TPI |
| Static Load | 12491 lbf |
| Dynamic Load (1×10 ⁶ revs) | 4158 lbf |
| Lead Accuracy | 0.0003"/2π; 0.0005"/ft |
| Drag Torque (Preload) | 3.5 in-lb(280lbs) |