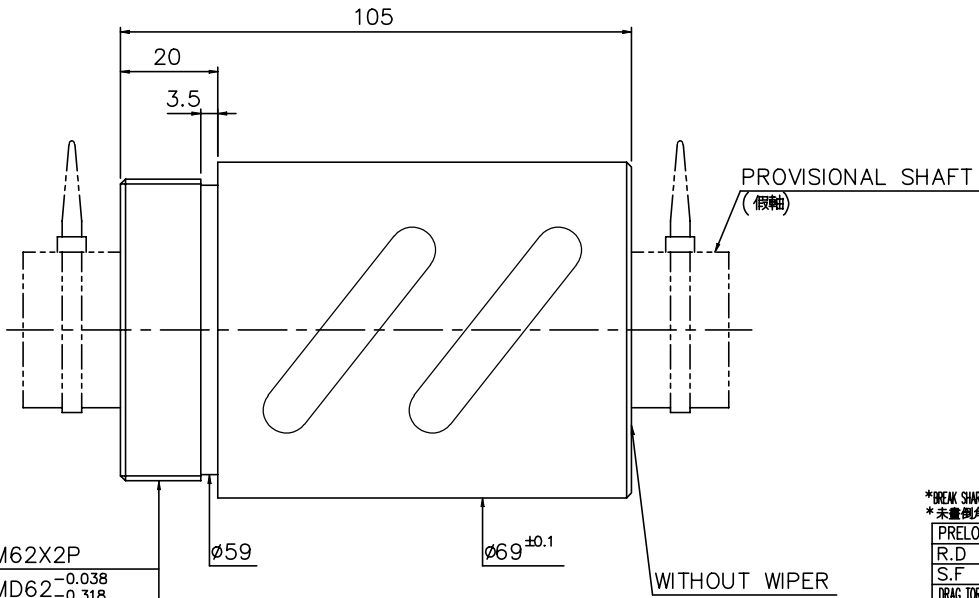
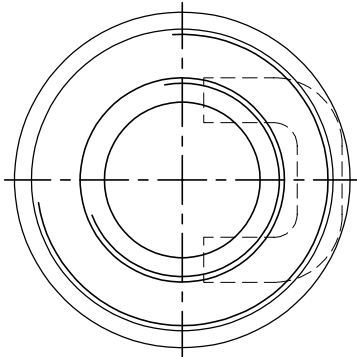


1 2 3 4 5 6 7 8 9

A  
B  
C  
D  
E  
F  
G

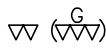


M62X2P  
MD62  $-0.038$   
           $-0.318$   
PD60.701  $-0.038$   
              $-0.218$

\*BREAK SHARP EDGE UNLESS OTHER SPECIFIED  
\*未畫倒角者去毛邊

PRELOAD(kgF)	
R.D	
S.F (kgF)	
DRAG TORQUE(kgF-cm)	
LUBRICATION	OIL
DIRECTION OF TURN	R.H
PC DIA.	34.26
BALL DIA.	6.35
BALL TRACK FORM	GOTHIC
BACKLASH	0.05MAX
CIRCUIT	2.5*2
LEAD ANGLE	5.31°
DYNAMIC (kgF)	
STATIC (kgF)	
LEAD	10.

SPEC: R32-10B2-RSB



UNCAMBERED USE	<input type="checkbox"/> C0.5	<input type="checkbox"/> C1	<input type="checkbox"/> C
SCALE	1: X		

CUSTR	HIWIN STD	DATE	07.08.'98
TITLE	BALL SCREW	DWG	林進銘
MATERIAL	NT: SNCM220	CHK	
DWG.NO.	A109P4A1	APPD	
PROCESS NO.	E		

CUSTOMER DRAWING NO.	
MC TYPE	
ANAL TYPE	

UNTOL DIMM	mm
UP	16 30 120 300 600 1200 2400
TO	±0.1 ±0.2 ±0.3 ±0.4 ±0.5 ±0.6 ±1.0 ±1.5
THREAD BALL TRACK	HRC 58 ~ 62
THREAD END	ALLOWS ABOVE LENGTH OUT OF HARDNESS TOLERANCE

HIWIN® BALLSCREWS

\* PLEASE IGNORE CHINESE CHARACTERS WHICH ARE FOR OUR REFERENCE ONLY.

DATE	MODIFICATION	APPROVED