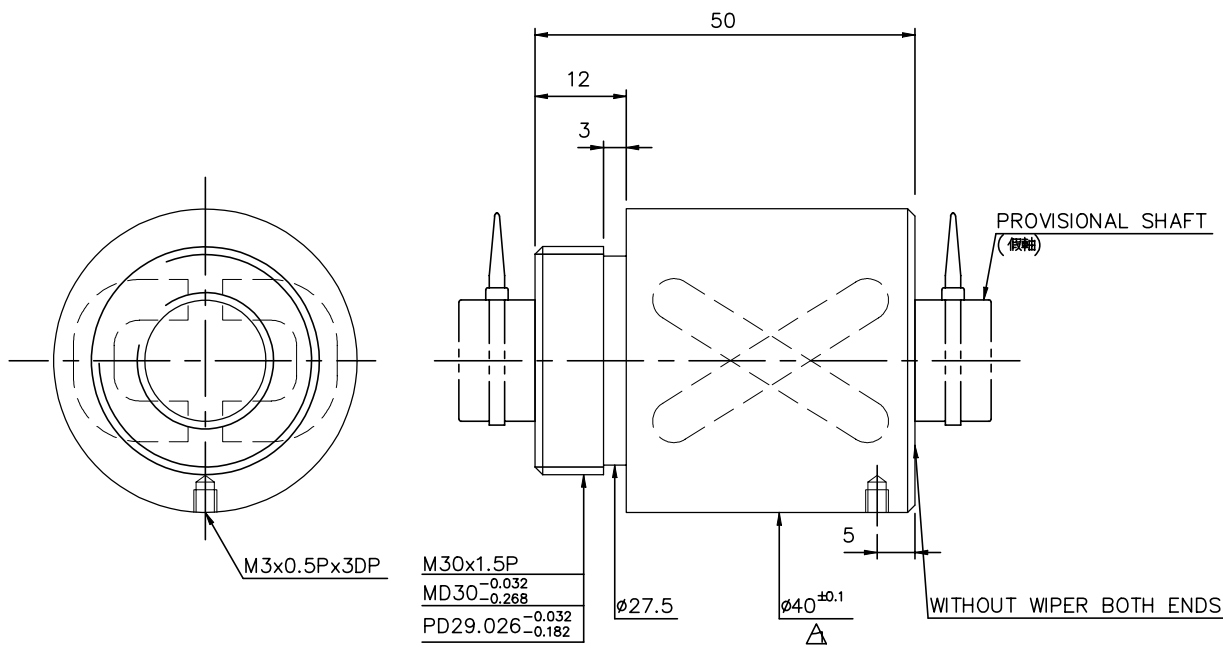


1 2 3 4 5 6 7 8 9

NOTE: THREAD MUST BE GROUND.
(螺紋須經研磨處理)



M30x1.5P
MD30^{-0.032}_{-0.268}
PD29.026^{-0.032}_{-0.182}

∅27.5

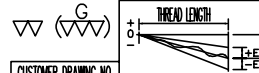
∅40^{±0.1}

WITHOUT WIPER BOTH ENDS

*BREAK SHARP EDGE UNLESS OTHER SPECIFIED
*未畫倒角者去毛邊

PRELOAD(kgf)	
R.D	
S.F (kgf)	
DRAG TORQUE(Ng-cm)	
LUBRICATION	OIL
DIRECTION OF TURN	R.H
PC DIA.	16.62
BALL DIA.	3.175
BALL TRACK FORM	GOthic
BACKLASH	0.05MAX
CIRCUIT	1.5*2
LEAD ANGLE	17.04°
DYNAMIC (kgf)	
STATIC (kgf)	
LEAD/PITCH	16/8

SPEC: R16-16A2-DRSB



UNCHECKED USE	<input type="checkbox"/> C0.5	<input checked="" type="checkbox"/> C1	<input type="checkbox"/> C	CUSTOMER	HIWIN STD	DATE	04.02.99
ROUGH MACHINING	<input type="checkbox"/> M/C	<input type="checkbox"/> GRD	<input type="checkbox"/> 1: X	TITLE	BALL SCREW	DWG	張曉華
UNTOL	DIMN	mm		MATERIAL	NT: SNCM220	APPD	
UP TO	30	120	300	600	1200	2400	2400
T:	±0.1	±0.2	±0.3	±0.4	±0.5	±0.8	±1.0
E:	e300:						
THREAD BALL TRACK	HRC 58 ~ 62			THREAD END	ALLOWS ABOVE LENGTH		
					OUT OF HARDNESS TOLERANCE		

04.02.99	MOD. A	
DATE	MODIFICATION	APPROVED

* PLEASE IGNORE CHINESE CHARACTERS WHICH ARE FOR OUR REFERENCE ONLY.

HIWIN BALLSCREWS