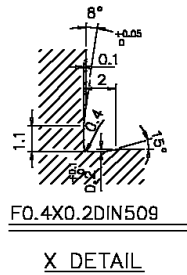
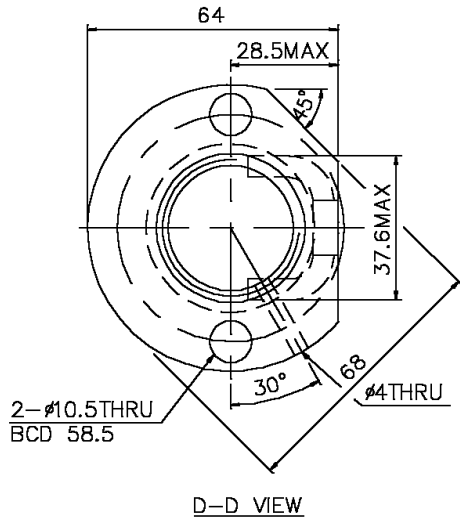
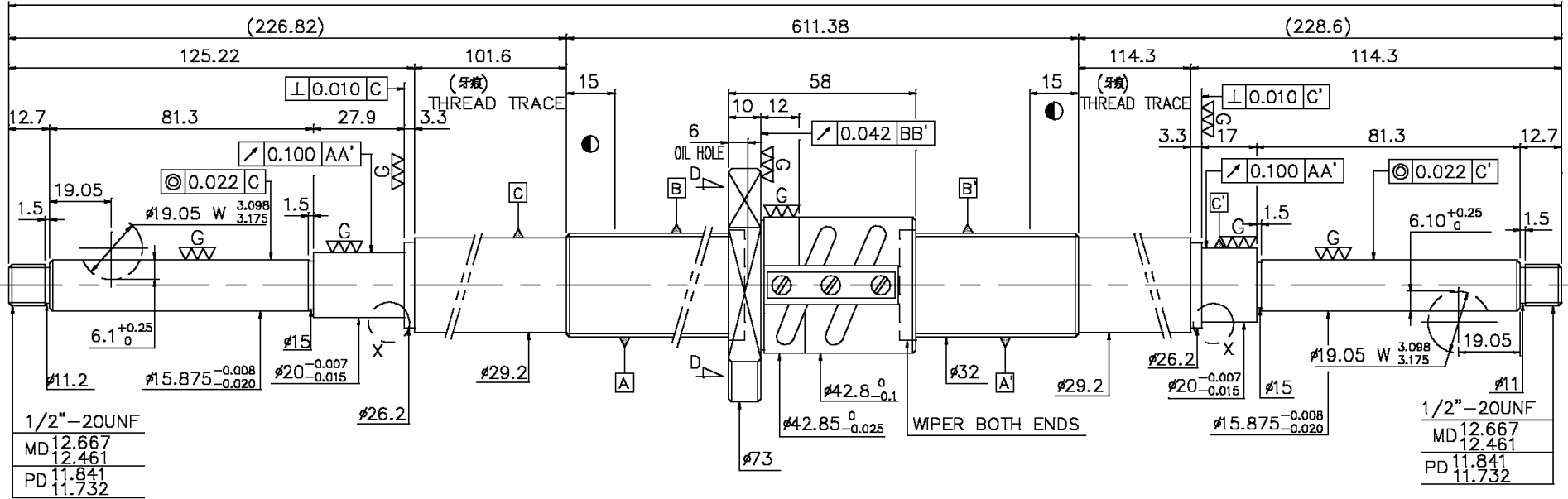


A10JS9A1

1066.8



1. MAX AXIAL LOAD: _____ kgf
2. MAX BALLSCREW ROTATIONAL SPEED: _____ rpm
3. MAX FEED RATE: _____ m/min

PRELOAD (kgf)	113
R.D	29.124
S.F (kgf)	0.04~1.36
DRAG TORQUE (kgf-cm)	0.10~4.00
LUBRICATION	---
DIRECTION OF TURN	R.H
PC DIA.	32.4
BALL DIA.	3.175
BACKLASH	0
CIRCUIT	2.5*2
LEAD ANGLE	2.86°
DYNAMIC (kgf)	1702
STATIC (kgf)	5098
LEAD	5.08

SPBC: R32-5.08B2-FSV-611.38-1066.8-0.05

UNCHAMFERED USE <input type="checkbox"/> R0.5 <input type="checkbox"/> R1 <input type="checkbox"/> R	SCALE	MATERIAL	SH: CF53	DATE	11.28.01
ROUNDER W/C FIN W/C GRD	1: X	NT: SNCM220	DWG	APPD	
UNTOL DIMN mm		THREAD BALL TRACK	HRC 56 ~ 62	PROCESS NO	G E
UP 6 30 120 300 600 1200 OVER		CUSTR	HIWIN STD.	DWG.NO.	A10JS9A1
TD 8 30 120 300 600 1200 2400					
±0.1 ±0.2 ±0.3 ±0.4 ±0.5 ±0.8 ±1.0 ±1.5					

*BREAK SHARP EDGE UNLESS OTHER SPECIFIED.	CUSTOMER DRAWING NO.
*未畫倒角者以R0.5MAX	
① THREAD END ALLOWS ABOVE LENGTH OUT OF HARDNESS TOLERANCE	MC TYPE
	ANAL TYPE

DATE	MODIFICATION	APPROVED

* PLEASE IGNORE CHINESE CHARACTERS WHICH ARE FOR OUR REFERENCE ONLY.