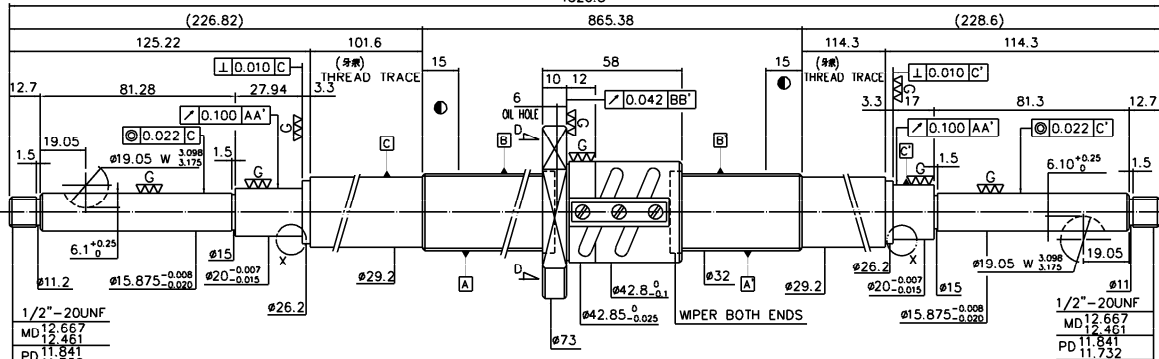
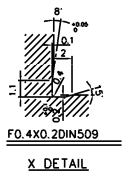
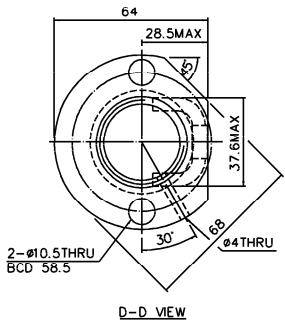


1320.8



1/2" - 20UNF
MD 12.667
PD 11.841
11.732

1/2" - 20UNF
MD 12.667
PD 11.841
11.732



- 1. MAX AXIAL LOAD: _____ kgf
- 2. MAX BALLSCREW ROTATIONAL SPEED: _____ rpm
- DN VALUE: _____
- ACCELERATION = _____ m/sec²
- 3. MAX FEED RATE: _____ m/min

PRELOAD(kgf)	113
R.D	29.124
S.F (kgf)	0.04~1.36
DRAG TORQUE(N·m)	0.10~4.00
LUBRICATION	
DIRECTION OF TURN	R.H
PC DIA	32.4
BALL DIA	3.175
BACKLASH	0
CIRCUIT	2.5*2
LEAD ANGLE	2.86°
DYNAMIC (kgf)	1702
STATIC (kgf)	5098
LEAD	5.08

SPEC: R32-5.08B2-FSV-865.38-1320.8-0.05



UNMEASURED USE	ØRO.5	ØR1	ØR
100% MEAN WAVE	ØRO.5	ØR1	ØR
SCALE	1: X		
UNIT	mm		
GRD	1500	1500	1500
10	30	30	30
20	60	60	60
30	90	90	90
40	120	120	120
50	150	150	150
60	180	180	180
70	210	210	210

PRELOAD (kgf)	113
STATIC (kgf)	5098
DYNAMIC (kgf)	1702
LEAD ANGLE	2.86°
CIRCUIT	2.5*2
BACKLASH	0
BALL DIA	3.175
PC DIA	32.4
DIRECTION OF TURN	R.H
LUBRICATION	
DRAG TORQUE (N·m)	0.10~4.00
S.F (kgf)	0.04~1.36
R.D	29.124
PRELOAD (kgf)	113

E300:0.05

HIWIN BALLSCREWS

MATERIAL	SH: CF53	DATE	11.28.01
	NT: SNCM220	DWG	280808
THREAD BALL TRACK	APPD	DRABR	
HRC	56 ~ 62	PROCESS	M G I E
CUSTOMER	HIWIN STD.		
DWG. NO.	A10JSAA1		

DATE	MODIFICATION	APPROVED

* PLEASE IGNORE CHINESE CHARACTERS WHICH ARE FOR OUR REFERENCE ONLY.