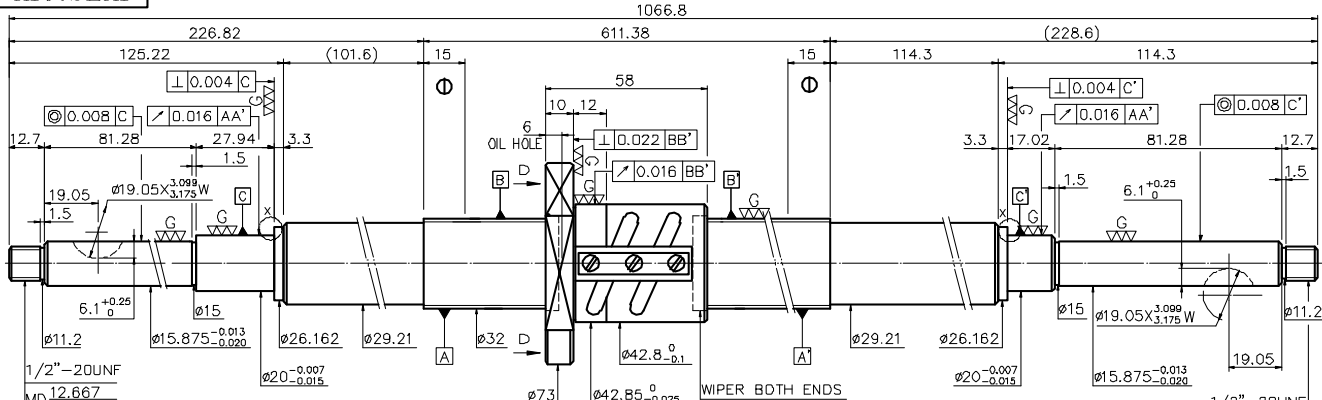
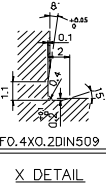
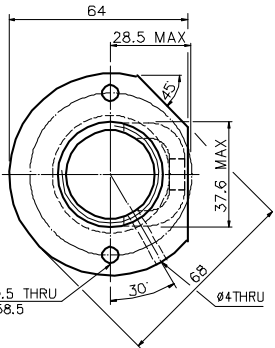


A10JSEA1



1/2"-20UNF
MD 12.667
12.461
PD 11.841
11.732

1/2"-20UNF
MD 12.667
12.461
PD 11.841
11.732



- 1. MAX AXIAL LOAD: _____ kgf
- 2. MAX BALLSCREW ROTATIONAL SPEED: _____ rpm
- DN VALUE: _____
- ACCELERATION = _____ m/sec²
- 3. MAX FEED RATE: _____ m/min

PRELOAD(kgf)	207
R.D	29.324
S.F. (kgf)	0.65~1.92
DRAG TORQUE(kgf-cm)	1.88~5.64
LUBRICATION	_____
DIRECTION OF TURN	R.H
PC DIA.	32.6
BALL DIA.	3.175
BACKLASH	0
CIRCUIT	2.5*2
LEAD ANGLE	2.84°
DYNAMIC (kgf)	1886
STATIC (kgf)	5666
LEAD	5.08

SPEC: R32-5.08B2-FSV-611.38-1066.8-0.012

		UNCHAMFERED USE	CR0.5	CR1	CR	MATERIAL	SH:50CrMo4	DATE	11.28.'01
		ROUGH TURN W/CI GRD	20 ^a	10 ^a	5 ^a	3 ^a	INT:SNCM220	DWG	张明
UNTOL DIMM mm UP 16 30 120 1500 1600 12000 OVER 10 40 100 200 400 1000 2000						THREAD BALL TRACK HRC 58 ~ 62		PROCESS NO	G E
*BRAIN SWAMP EDGE UNLESS OTHER SPECIFIED *未量时均按L0.5MAX		CUSTOMER DRAWING NO.		T: -0.018 s100: 0.012 E: 0.016 e: 0.014		DUSTR DWGNO.		HIWIN STD. A10JSEA1	

DATE	MODIFICATION	APPROVED

* PLEASE IGNORE CHINESE CHARACTERS WHICH ARE FOR OUR REFERENCE ONLY