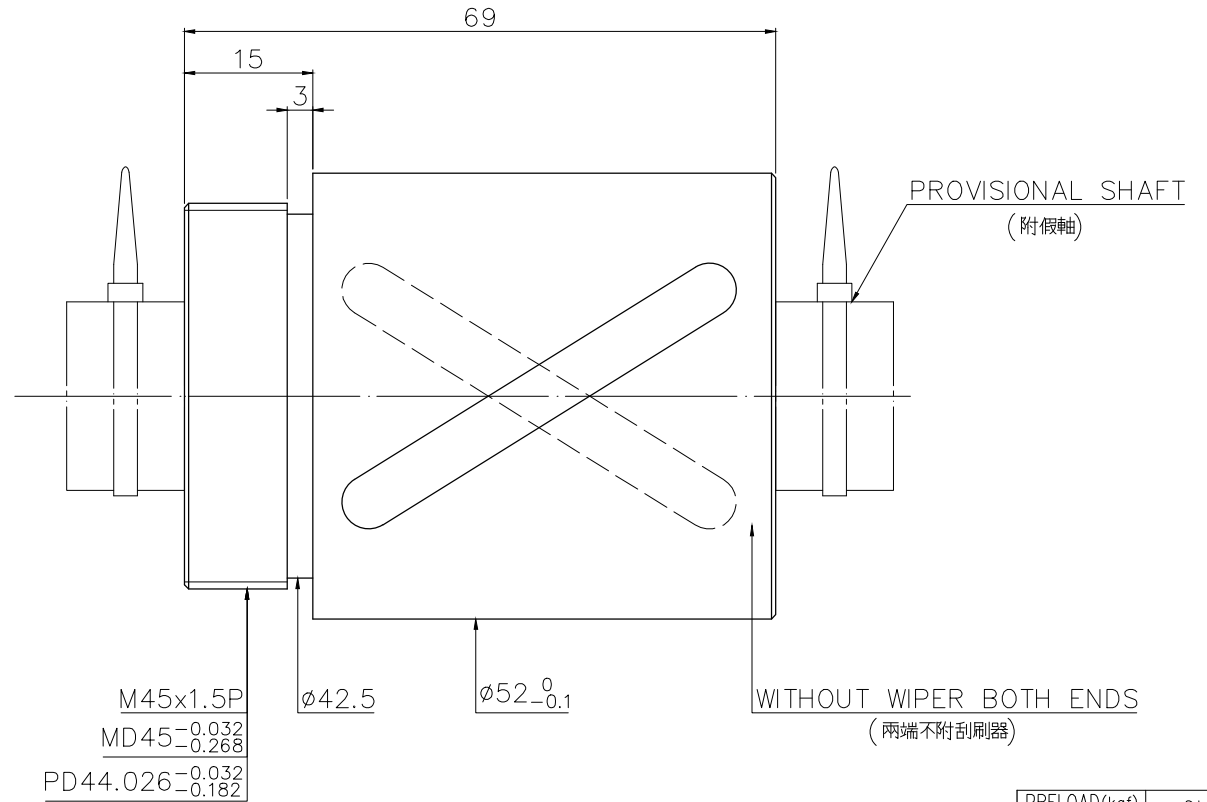
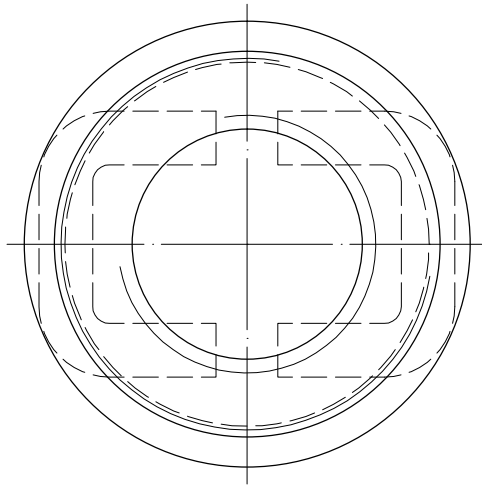


A10RBPA3

More Confidential

$\sqrt{Ra6.3}$ ($\sqrt{Ra0.4}$)



NOTE: STELL BALL TOLERANCE MUST BE IN THE RANGE OF $-0.0025, -0.01$.
(鋼珠公差限用 $-0.0025, -0.01$)

△ SPEC: 4R25-25A2-DRSB

MAX. AXIAL LOAD (kgf)	LUBRICATION	BALL DIA.	3.969
MAX. ROTATIONAL SPEED (rpm)	SPACE BALL	BACKLASH	0.04MAX
DN VALUE	EI TYPE ASSEMBLY METHOD	CIRCUIT	1.5*2
MAX. FEED RATE (m/min)	CUSTOMER DRAWING NO.	LEAD ANGLE	17
ACCELERATION (m/sec ²)	CUSTOMER MC TYPE	DYNAMIC (kgf)	1174
SUPPORT METHOD	CUSTOMER AXIAL TYPE	STATIC (kgf)	2729
		LEAD/PITCH	25/12.5

PRELOAD (kgf)	~
R.D.	~
S.F. (kgf)	~
DRAG TORQUE (kgf-cm)	~
DIRECTION OF TURN	R
P.C. DIA.	26.03
BALL DIA.	3.969
BACKLASH	0.04MAX
CIRCUIT	1.5*2
LEAD ANGLE	17
DYNAMIC (kgf)	1174
STATIC (kgf)	2729
LEAD/PITCH	25/12.5

UNCHAMFERED USE	<input checked="" type="checkbox"/> CO.5	<input type="checkbox"/> C1	<input type="checkbox"/> C	MAT.	SH:ROLLED	DATE	2019.06.20
ROUGH M/C	FIN M/C	GRD	SCALE		NT:SNM220/Equivalent	DWG	Sandy
$\sqrt{Ra25}$	$\sqrt{Ra6.3}$	$\sqrt{Ra0.4}$	1: X		THREAD BALL TRACK	CHK	Sting
NORMAL TOLERANCE mm					HRC 56 ~ 62	APPD	Michelle
UP	6	30	120	300	600	1200	2400
TO	6	30	120	300	600	1200	2400
	±0.1	±0.2	±0.3	±0.4	±0.5	±0.8	±1.0
THREAD LENGTH				*BREAK SHARP EDGE UNLESS OTHER SPECIFIED. *未畫倒角者去毛邊 (CO.2MAX)			
ep:				* THREAD END ALLOWS ABOVE LENGTH OUT OF HARDNESS TOLERANCE.			
				CUSTR H-CHICAGO DWG.NO. A10RBPA3			

2019.06.20	MOD.	Michelle
DATE	MODIFICATION	APPROVED

* PLEASE IGNORE CHINESE CHARACTERS WHICH ARE FOR OUR REFERENCE ONLY.