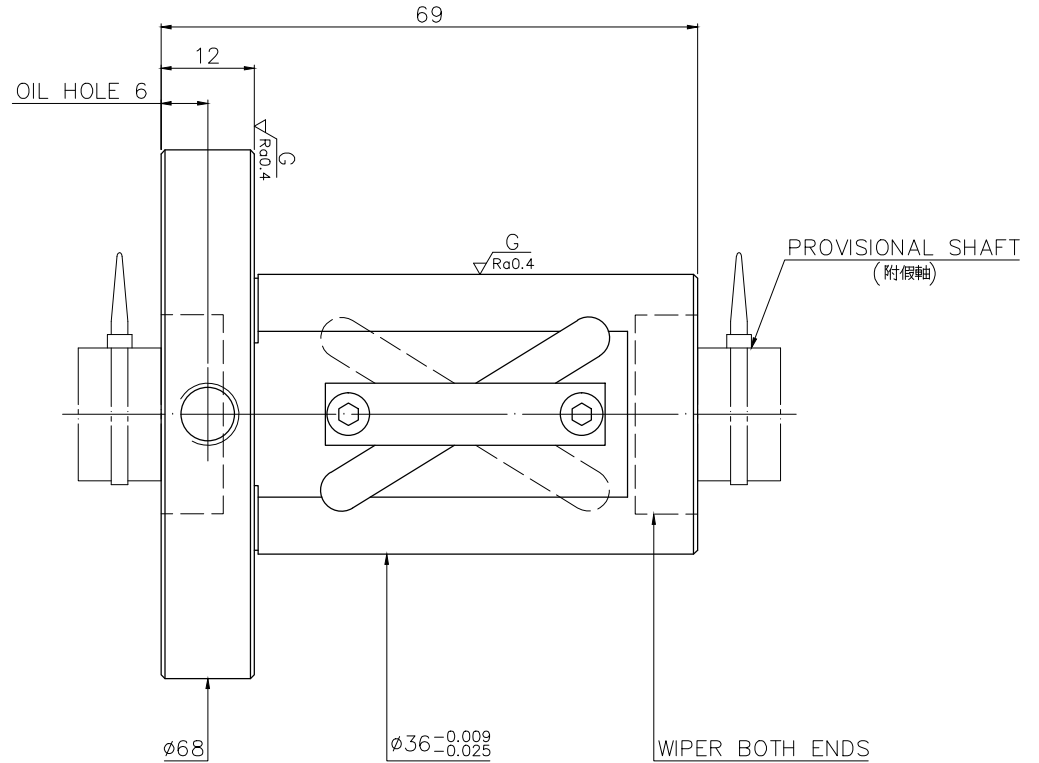
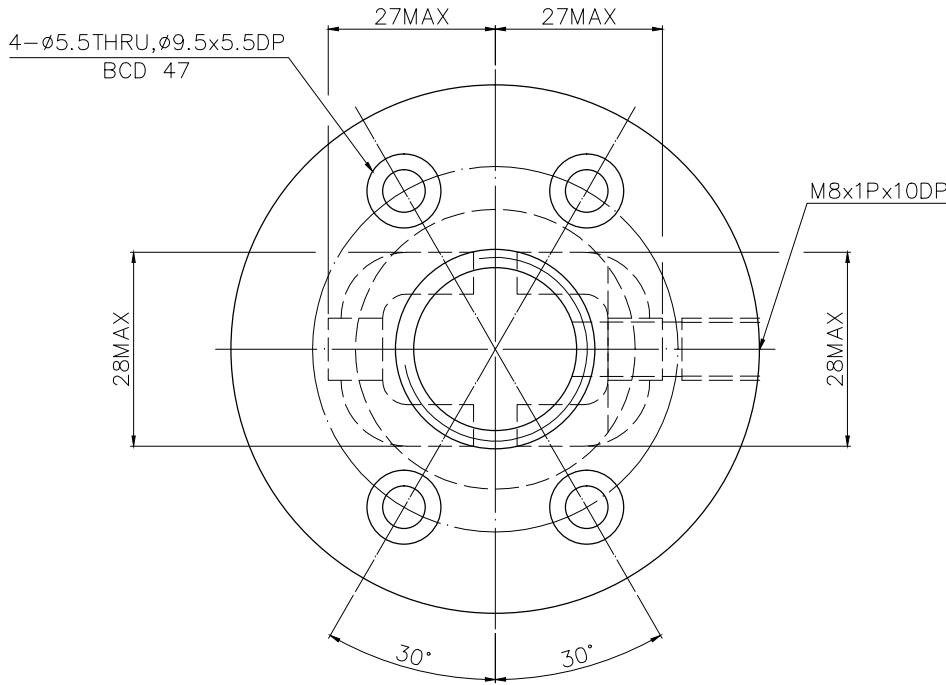


A10SKUA3

More Confidential

$\sqrt{Ra6.3}$ ($\sqrt{Ra0.4}$)



NOTE :1.THIS NUT MATCH UP THE SHAFT A10SL9.
 (螺帽須搭配圖號 A10SL9 螺桿出貨.)
 2.STEEL BALL TOLERANCE MUST BE IN THE RANGE OF -0.0025,-0.010
 (鋼珠公差限用-0.0025,-0.010)

PRELOAD(kgf)	~
R.D.	~
S.F. (kgf)	~
DRAG TORQUE(kgf-cm)	~
DIRECTION OF TURN	R
P.C. DIA.	20.36
BALL DIA.	3.175
BACKLASH	0.04MAX
CIRCUIT	1.5*2
LEAD ANGLE	17.36
DYNAMIC (kgf)	792
STATIC (kgf)	1744
LEAD/PITCH	20/10

△
 SPEC: 4R20-20A2-DFSV

MAX. AXIAL LOAD (kgf)		LUBRICATION		BALL DIA.	3.175
MAX. ROTATIONAL SPEED (rpm)		SPACE BALL		BACKLASH	0.04MAX
DN VALUE		EI TYPE ASSEMBLY METHOD		CIRCUIT	1.5*2
MAX. FEED RATE (m/min)		CUSTOMER DRAWING NO.		LEAD ANGLE	17.36
ACCELERATION (m/sec ²)		CUSTOMER MC TYPE		DYNAMIC (kgf)	792
SUPPORT METHOD		CUSTOMER AXIAL TYPE		STATIC (kgf)	1744
				LEAD/PITCH	20/10

THREAD LENGTH 	UNCHAMFERED USE <input checked="" type="checkbox"/> C0.5 <input type="checkbox"/> C1 <input type="checkbox"/> C ROUGH M/C FIN M/C GRD $\sqrt{Ra25}$ $\sqrt{Ra6.3}$ $\sqrt{Ra0.4}$	SCALE 1: X	MAT. SH.ROLLED INT:SNM220/Equivalent	DATE 2019.06.20 DWG Sandy
	NORMAL TOLERANCE mm UP 6 30 120 300 600 1200 2400 OVER TO ±0.1 ±0.2 ±0.3 ±0.4 ±0.5 ±0.8 ±1.0 ±1.5	THREAD BALL TRACK HRC 56 ~ 62	APPD Michelle	CUSTR H-CHICAGO DWG.NO. A10SKUA3

*BREAK SHARP EDGE UNLESS OTHER SPECIFIED.
 *未量倒角者去毛邊 (CO.2MAX)
 ● THREAD END ALLOWS ABOVE LENGTH OUT OF HARDNESS TOLERANCE

2019.06.20	MOD.	Michelle
DATE	MODIFICATION	APPROVED

* PLEASE IGNORE CHINESE CHARACTERS WHICH ARE FOR OUR REFERENCE ONLY.

HIWIN® BALLSCREWS