

1
A10SSHA3

2
Released by HIWIN design group.

3
▽ (▽▽) ^G

4

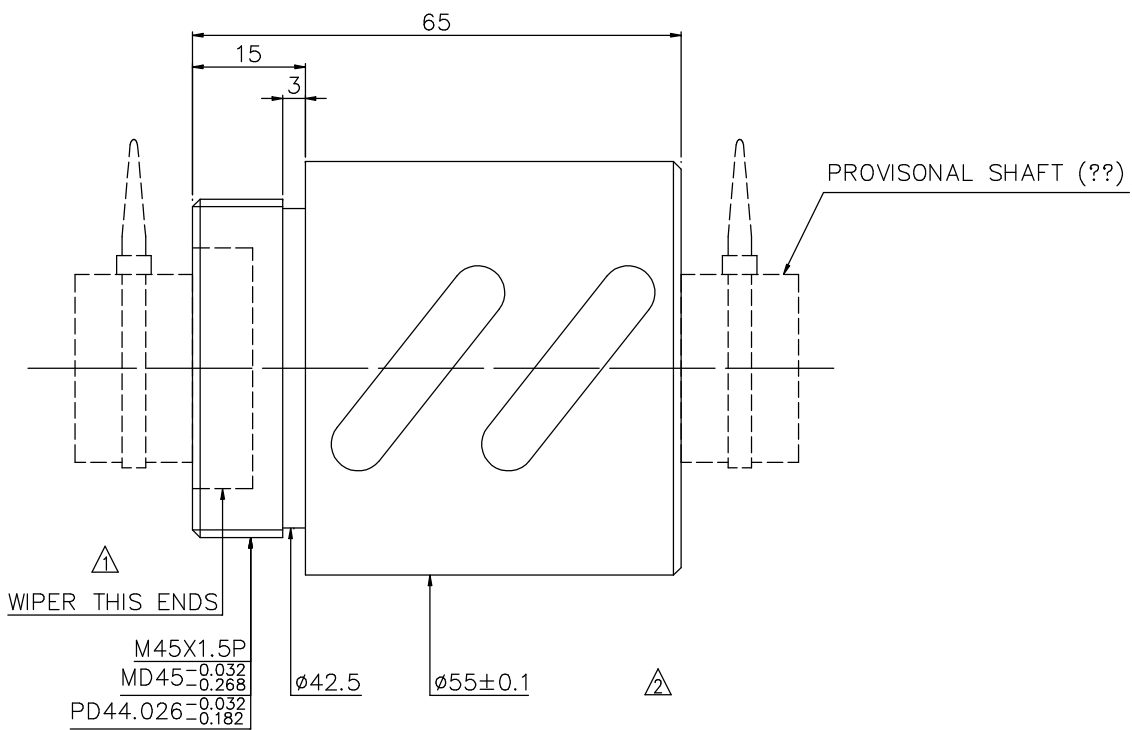
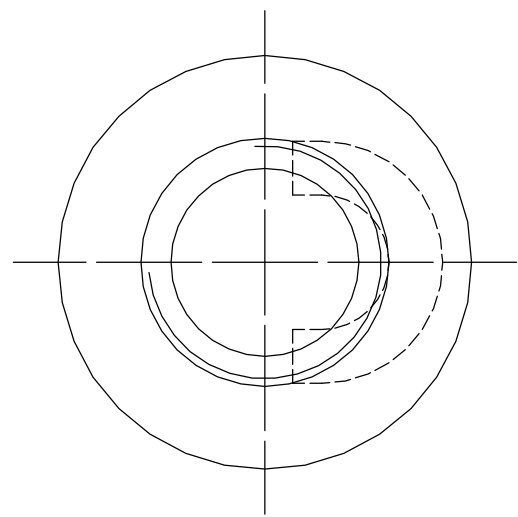
5

6

7

8

9



M45X1.5P
MD45^{-0.032}/_{-0.268}
PD44.026^{-0.032}/_{-0.182}

NOTE: 1. Steel ball tolerance must be in the range of -0.0025? - 0.010 (?????? - 0.0025, - 0.010)

SPEC: R25-10A2-RSB

| | | | | |
|------------------------------------|-------------------------|--|----------------------|---------|
| MAX. AXIAL LOAD (kgf) | LUBRICATION | | PRELOAD (kgf) | ~ |
| MAX. ROTATIONAL SPEED (rpm) | SPACE BALL | | R.D. | ~ |
| DN VALUE | EI TYPE ASSEMBLY METHOD | | S.F. (kgf) | ~ |
| MAX. FEED RATE (m/min) | CUSTOMER DRAWING NO. | | DRAG TORQUE (kgf-cm) | ~ |
| ACCELERATION (m/sec ²) | CUSTOMER MC TYPE | | DIRECTION OF TURN | R |
| SUPPORT METHOD | CUSTOMER AXIAL TYPE | | P.C. DIA. | 26.1 |
| | | | BALL DIA. | 4.763 |
| | | | BACKLASH | 0.03MAX |
| | | | CIRCUIT | 1.5*2 |
| | | | LEAD ANGLE | 6.95 |
| | | | DYNAMIC (kgf) | 1661 |
| | | | STATIC (kgf) | 3468 |
| | | | LEAD | 10 |

| | | | |
|--|---|--|---|
| | UNCHAMFERED USE <input type="checkbox"/> RO.5 <input checked="" type="checkbox"/> R1 <input type="checkbox"/> OR ROUGH M/C FIN M/C GRD 25a 6.3a 0.4a ∇ ∇ ∇ ∇ ∇ ∇ | SCALE 1: X NORMAL TOLERANCE mm UP 130 120 300 600 1200 2400 OVER TO 6 30 120 300 600 1200 2400 ±0.1 ±0.2 ±0.3 ±0.4 ±0.5 ±0.8 ±1.0 ±1.5 | MAT. SH: ROLLED DATE 2008.05.28 NT: SNCM220/Equivalent DWG Kai THREAD BALL TRACK APPD Lady HRC 56 ~ 62 PROCESS NO. G |
| | e300: ~ E: ~ | HIWIN BALLSCREWS | CUSTR H-CHICAGO DWG.NO. A10SSHA3 |

*BREAK SHARP EDGE UNLESS OTHER SPECIFIED.
*??????RO.5MAX
● THREAD END ALLOWS ABOVE LENGTH OUT OF HARDNESS TOLERANCE

| | | |
|------------|--------------|----------|
| 2008.05.29 | MOD. △~△ | Lady |
| DATE | MODIFICATION | APPROVED |

* PLEASE IGNORE CHINESE CHARACTERS WHICH ARE FOR OUR REFERENCE ONLY.