

1 A10WXP3

2 More Confidential

3  $\sqrt{Ra6.3}$  ( $\sqrt{Ra0.4}$ )

4

5

6

7

8

9

A

B

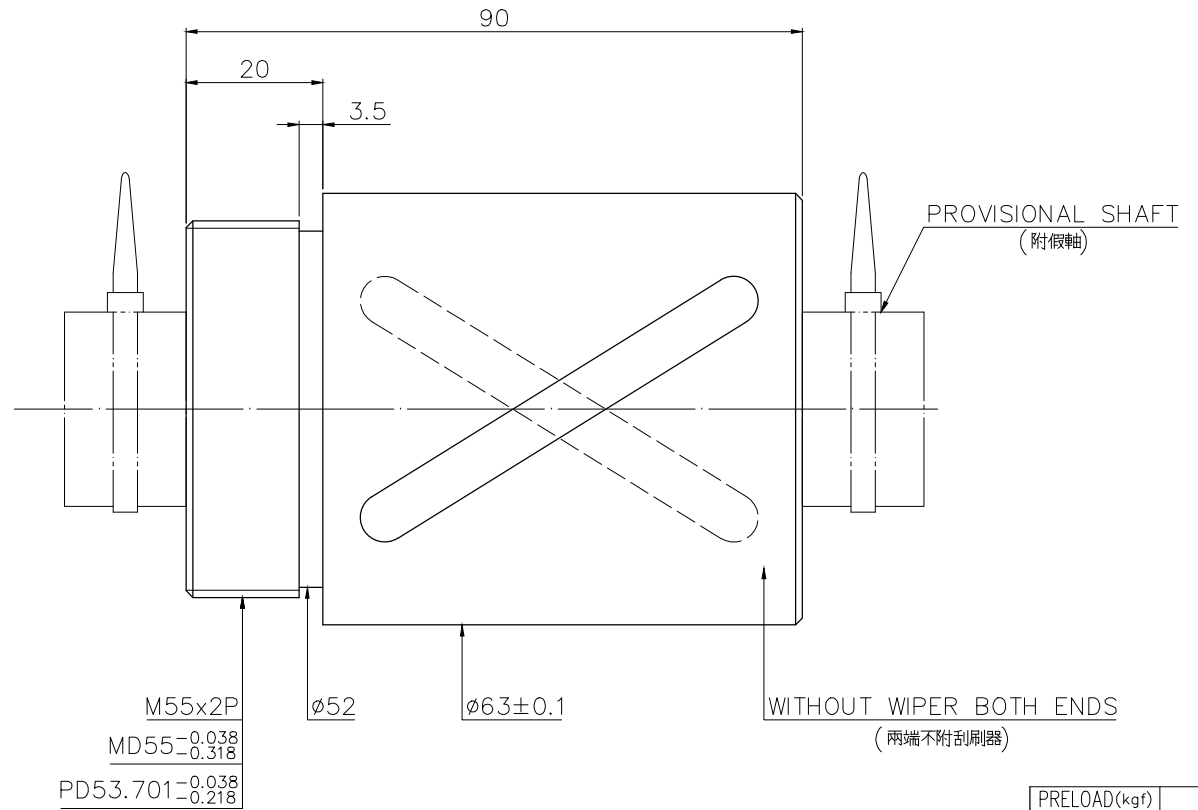
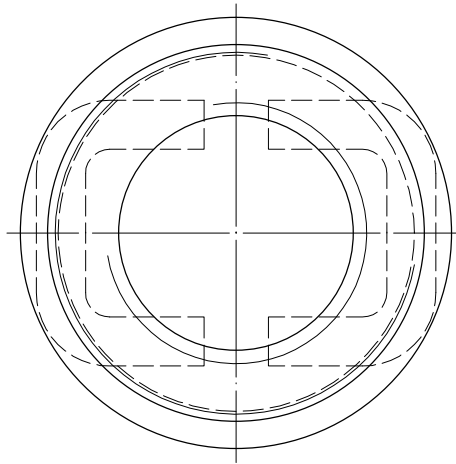
C

D

E

F

G



△ NOTE : STEEL BALL TOLERANCE MUST BE IN THE RANGE OF  $-0.0025, -0.01$  .  
(鋼珠公差限用  $-0.0025, -0.01$ )

PRELOAD(kgf)	~
R.D.	~
S.F. (kgf)	~
DRAG TORQUE(kgf-cm)	~
DIRECTION OF TURN	R
P.C. DIA.	33.26
BALL DIA.	4.763
BACKLASH	0.05MAX
CIRCUIT	1.5*2
LEAD ANGLE	17.03
DYNAMIC (kgf)	1681
STATIC (kgf)	4208
LEAD/PITCH	32/16

SPEC: 4R32-32A2-DRSB

MAX. AXIAL LOAD(kgf)		LUBRICATION		BALL DIA.	4.763
MAX. ROTATIONAL SPEED (rpm)		SPACE BALL		BACKLASH	0.05MAX
DN VALUE		E1 TYPE ASSEMBLY METHOD		CIRCUIT	1.5*2
MAX. FEED RATE(m/min)		CUSTOMER DRAWING NO.		LEAD ANGLE	17.03
ACCELERATION (m/sec <sup>2</sup> )		CUSTOMER MC TYPE		DYNAMIC (kgf)	1681
SUPPORT METHOD		CUSTOMER AXIAL TYPE		STATIC (kgf)	4208
				LEAD/PITCH	32/16

<p>UNCHAMFERED USE <input type="checkbox"/> C0.5 <input checked="" type="checkbox"/> C1 <input type="checkbox"/> C</p> <p>ROUGH M/C/FIN M/C/GRD <input type="checkbox"/> <input type="checkbox"/> <input type="checkbox"/></p> <p><math>\sqrt{Ra25}</math> <math>\sqrt{Ra6.3}</math> <math>\sqrt{Ra0.4}</math> <math>\sqrt{Ra0.2}</math> <math>\sqrt{Ra0.1}</math></p> <p>SCALE 1: X</p> <p>NORMAL TOLERANCE mm</p> <table border="1"> <tr><td>UP</td><td>6</td><td>30</td><td>120</td><td>300</td><td>600</td><td>1200</td><td>2400</td><td>OVER</td></tr> <tr><td>TO</td><td>±0.1</td><td>±0.2</td><td>±0.3</td><td>±0.4</td><td>±0.5</td><td>±0.8</td><td>±1.0</td><td>±1.5</td></tr> </table> <p>1/300p: ~</p> <p>ep: ~</p> <p>*BREAK SHARP EDGE UNLESS OTHER SPECIFIED. *未畫倒角者去毛邊 (CO.2MAX)</p> <p>THREAD END ALLOWS ABOVE LENGTH OUT OF HARDNESS TOLERANCE</p>	UP	6	30	120	300	600	1200	2400	OVER	TO	±0.1	±0.2	±0.3	±0.4	±0.5	±0.8	±1.0	±1.5	<p>MAT. SH.ROLLED</p> <p>INT:SNCM220/Equivalent</p> <p>DATE 2019.06.20</p> <p>DWG Sandy</p> <p>THREAD BALL TRACK</p> <p>HRC 56 ~ 62</p> <p>CHK Sting</p> <p>APPD Michelle</p>	<p>CUSTR H-CHICAGO</p> <p>DWG.NO. A10WXP3</p>
UP	6	30	120	300	600	1200	2400	OVER												
TO	±0.1	±0.2	±0.3	±0.4	±0.5	±0.8	±1.0	±1.5												

2019.06.20	MOD.		Michelle
DATE	MODIFICATION	APPROVED	

\* PLEASE IGNORE CHINESE CHARACTERS WHICH ARE FOR OUR REFERENCE ONLY.

HIWIN BALLSCREWS