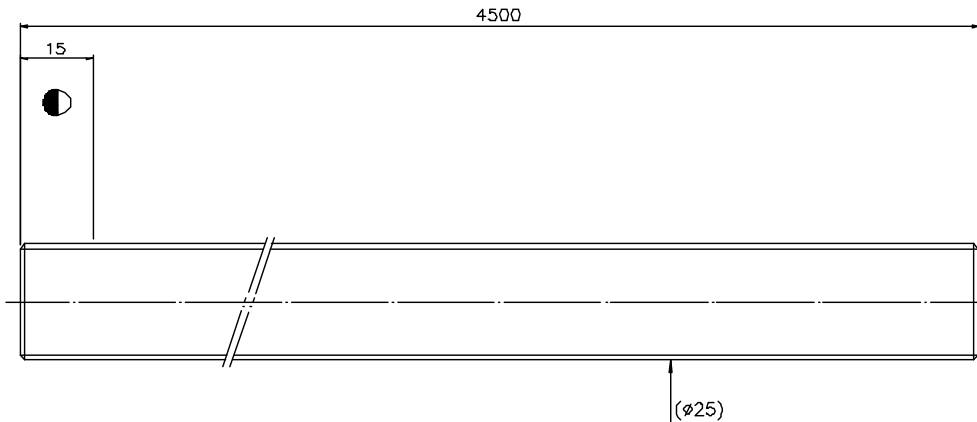


A10ZK6A1

Released by HIWIN design group.

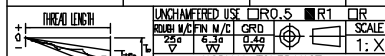
▽ (▽▽)



PRELOAD (kgf)	~
R.D.	21.232
S.F. (kgf)	~
DRAG TORQUE (kgf-m)	~
DIRECTION OF TURN	R
P.C. DIA.	26.1
BALL DIA.	4.763
BACKLASH	~
CIRCUIT	~
LEAD ANGLE	6.95
DYNAMIC (kgf)	~
STATIC (kgf)	~
LEAD	10

SPEC: R25-10-4500-4500-0.05

MAX. AXIAL LOAD (kgf)	LUBRICATION	
MAX. ROTATIONAL SPEED (rpm)	SPACE BALL	
DN VALUE	ET TYPE ASSEMBLY METHOD	
MAX. FEED RATE (m/min)	CUSTOMER DRAWING NO.	
ACCELERATION (m/sec ²)	CUSTOMER M/C TYPE	
SUPPORT METHOD	CUSTOMER ANIAL TYPE	

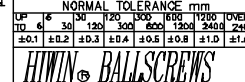


UNHAMEFERED USE	<input type="checkbox"/> R0.5	<input type="checkbox"/> R1	<input type="checkbox"/> R
ROUGH M/C FIN. M/C	<input type="checkbox"/> GRD	<input type="checkbox"/>	<input type="checkbox"/>
SCALE	1: X		

MAT. SH: CF53/Equivalent	DATE	2008.12.02
THREAD BALL TRACK	DWG	Penny
HRC 56 ~ 62	APPD	Kenny
CUSTR	PROCESS NO.	G

*BREAK SHARP EDGE UNLESS OTHER SPECIFIED
 *未盡銳角者以R0.5MAX
 * THREAD END ALWAYS ABOVE LENGTH
 * OUT OF HARDNESS TOLERANCE

1/300p:0.05
 ep:0.75



THREAD BALL TRACK HRC 56 ~ 62
 CUSTR HIWIN STD.
 DWG.NO. A10ZK6A1

2008.12.02	MOD. Δ~Δ	Kenny
DATE	MODIFICATION	APPROVED

* PLEASE IGNORE CHINESE CHARACTERS WHICH ARE FOR OUR REFERENCE ONLY.