

1  
A114DFA3

2  
Released by HIWIN design group.

3  
4  
G  
▽▽ (▽▽▽)

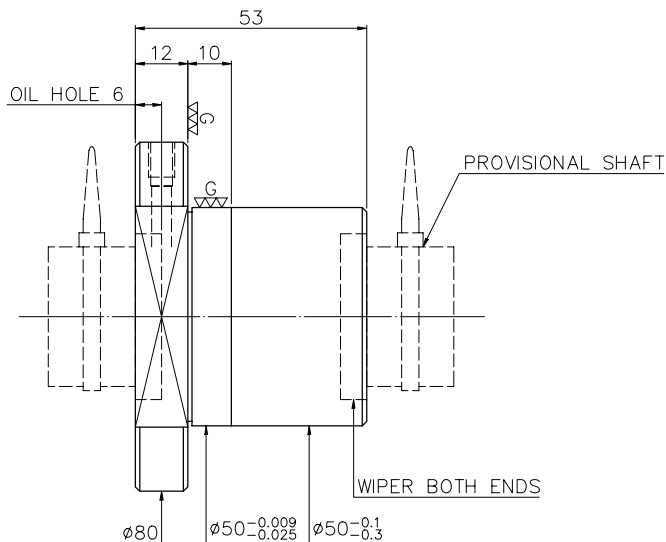
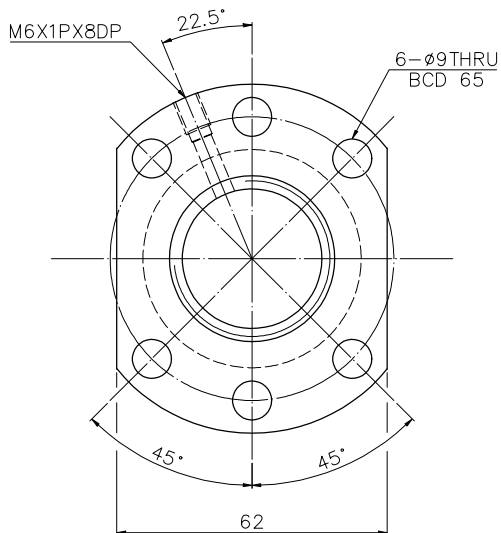
5

6

7

8

9



NOTE: 1. Steel ball tolerance must be in the range of  $-0.0025, -0.015$   
2. DIN 69051 part 5 form B TYPE 1.

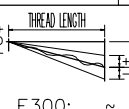
SPEC: R32-5.08T4-FS1

MAX. AXIAL LOAD (kgf)	LUBRICATION	BALL DIA.	3.175
MAX. ROTATIONAL SPEED (rpm)	SPACE BALL	BACKLASH $\Delta$	0.03MAX
DN VALUE	E1 TYPE ASSEMBLY METHOD	CIRCUIT	4
MAX. FEED RATE (m/min)	CUSTOMER DRAWING NO.	LEAD ANGLE	2.86
ACCELERATION (m/sec <sup>2</sup> )	CUSTOMER MC TYPE	DYNAMIC (kgf)	1291
SUPPORT METHOD	CUSTOMER AXIAL TYPE	STATIC (kgf)	3697
		LEAD	5.08

PRELOAD (kgf)	~
R.D	~
S.F (kgf)	~
DRAG TORQUE (kgf-cm)	~
DIRECTION OF TURN	R
PC DIA.	32.4

UNCHAMFERED USE <input type="checkbox"/> R0.5 <input checked="" type="checkbox"/> R1 <input type="checkbox"/> R	SCALE	MATL	SH: ROLLED	DATE	2007.07.16
ROUGH M/C FIN M/C GRD	1: X		NT: SNCM220/SCM415	DWG	JANET
25° 6.3° 0.4g 0.2g 0.2g	UNTOL DIMM mm		THREAD BALL TRACK	APPD	MICHELLE
UP 6 30 120 300 600 1200 2400 2400			HRC 56 ~ 62	PROCESS NO.	G
±0.1 ±0.2 ±0.3 ±0.4 ±0.5 ±0.8 ±1.0 ±1.5			CUSTR	H-CHICAGO	
			DWG.NO.	A114DFA3	

\*BREAK SHARP EDGE UNLESS OTHER SPECIFIED  
\*未畫倒角者以R0.5MAX  
● THREAD END ALLOWS ABOVE LENGTH OUT OF HARDNESS TOLERANCE



2007.07.16	MOD. $\Delta$	MICHELLE
DATE	MODIFICATION	APPROVED

\* PLEASE IGNORE CHINESE CHARACTERS WHICH ARE FOR OUR REFERENCE ONLY.

HIWIN® BALLSCREWS