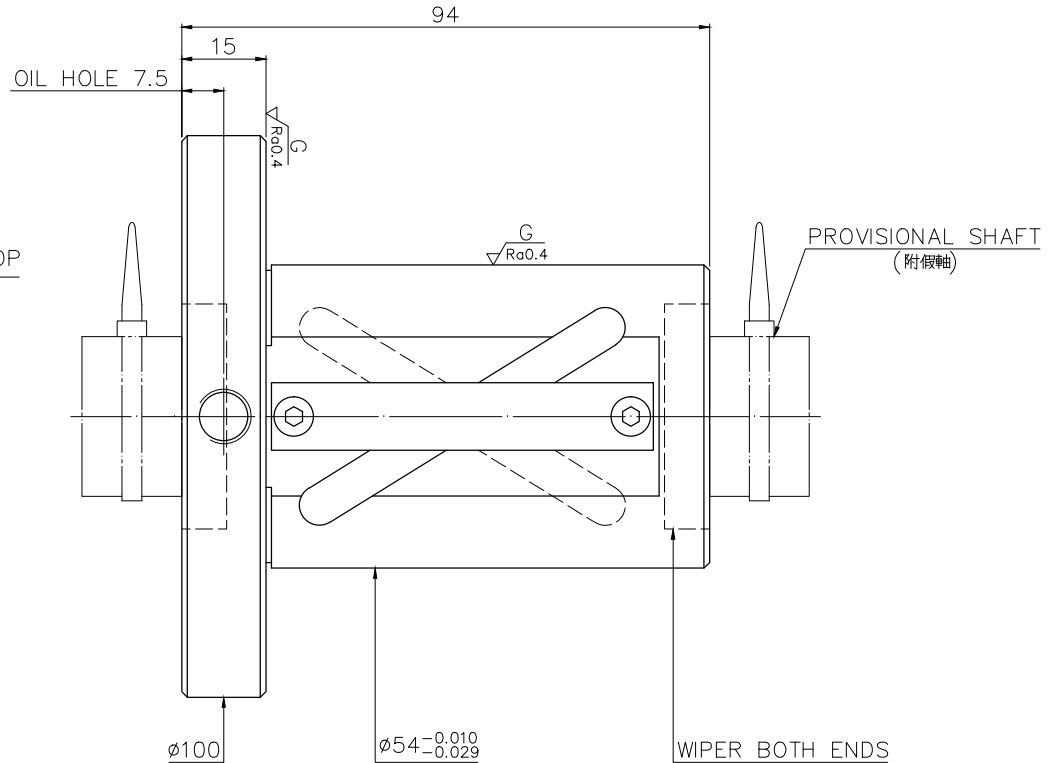
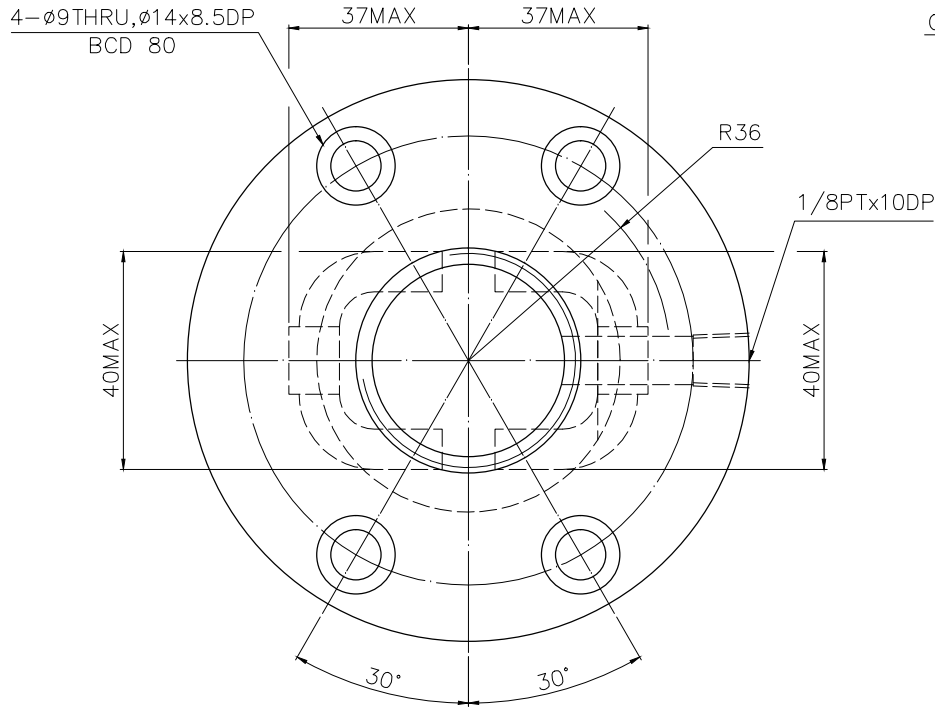


A114IDA4

More Confidential

$\sqrt{Ra6.3}$ ($\sqrt{Ra0.4}$)



NOTE : STEEL BALL TOLERANCE MUST BE IN THE RANGE OF $-0.0025, -0.015$.
(鋼珠公差限用 $-0.0025, -0.015$.)

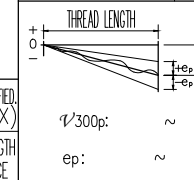
PRELOAD(kgf)	~
R.D.	~
S.F. (kgf)	~
DRAG TORQUE(kgf-cm)	~
DIRECTION OF TURN	R
P.C. DIA.	33.26
BALL DIA.	4.763
BACKLASH	0.05MAX
CIRCUIT	1.5*2
LEAD ANGLE	17.03
DYNAMIC (kgf)	1681
STATIC (kgf)	4208
LEAD/PITCH	32/16

SPEC: 4R32-32A2-DFSV

MAX. AXIAL LOAD (kgf)	LUBRICATION	BALL DIA.	4.763
MAX. ROTATIONAL SPEED (rpm)	SPACE BALL	BACKLASH	0.05MAX
DN VALUE	EI TYPE ASSEMBLY METHOD	CIRCUIT	1.5*2
MAX. FEED RATE (m/min)	CUSTOMER DRAWING NO.	LEAD ANGLE	17.03
ACCELERATION (m/sec ²)	CUSTOMER MC TYPE	DYNAMIC (kgf)	1681
SUPPORT METHOD	CUSTOMER AXIAL TYPE	STATIC (kgf)	4208
		LEAD/PITCH	32/16

UNCHAMFERED USE	<input type="checkbox"/> C0.5 <input checked="" type="checkbox"/> C1 <input type="checkbox"/> C	SCALE	1: X	MAT.	SH.ROLLED	DATE	2019.06.20
ROUGH M/C FIN M/C	GRD				INT: SNCM220/Equivalent	DWG	Sandy
$\sqrt{Ra25}$	$\sqrt{Ra6.3}$ $\sqrt{Ra0.4}$				THREAD BALL TRACK	CHK	Sting
					HRC 56 ~ 62	APPD	Michelle
						CUSTR	H-CHICAGO
						DWG.NO.	A114IDA4

*BREAK SHARP EDGE UNLESS OTHER SPECIFIED.
*未量倒角者去毛邊 (CO.2MAX)
THREAD END ALLOWS ABOVE LENGTH OUT OF HARDNESS TOLERANCE.



ROUGH M/C FIN M/C	GRD	SCALE	1: X
$\sqrt{Ra25}$	$\sqrt{Ra6.3}$ $\sqrt{Ra0.4}$		

2019.06.20	MOD.	Michelle
DATE	MODIFICATION	APPROVED

* PLEASE IGNORE CHINESE CHARACTERS WHICH ARE FOR OUR REFERENCE ONLY.

HIWIN BALLSCREWS