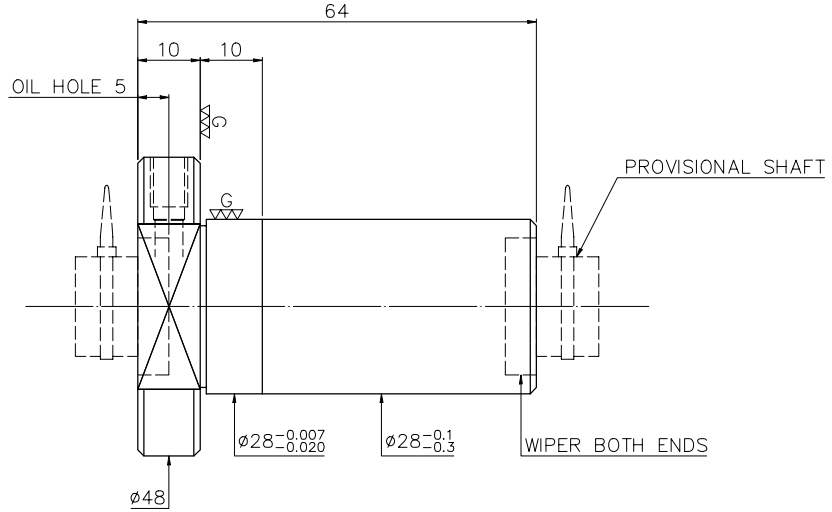
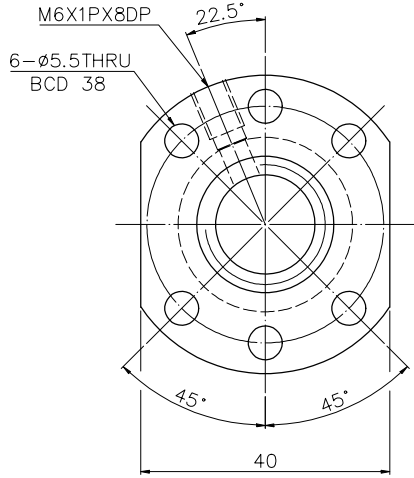


A114IHA3

Released by HIWIN design group.

▽ (▽▽)



NOTE: 1. Steel ball tolerance must be in the range of -0.0025, -0.015

PRELOAD(kgf)	~
R.D	~
S.F (kgf)	~
DRAG TORQUE(kgf-cm)	~
DIRECTION OF TURN	R
PC DIA.	15.96
BALL DIA.	3.175
BACKLASH Δ	0.03MAX
CIRCUIT	3
LEAD ANGLE	11.28
DYNAMIC (kgf)	623
STATIC (kgf)	1102
LEAD	10

SPEC: R16-10T3-FS1

MAX. AXIAL LOAD (kgf)	LUBRICATION	
MAX. ROTATIONAL SPEED (rpm)	SPACE BALL	
DIN VALUE	EI TYPE ASSEMBLY METHOD	
MAX. FEED RATE (m/min)	CUSTOMER DRAWING NO.	
ACCELERATION (m/sec <sup>2</sup> )	CUSTOMER MC TYPE	
SUPPORT METHOD	CUSTOMER AXIAL TYPE	

<p>E300: ~</p>	<input type="checkbox"/> UNCHAMFERED USE <input type="checkbox"/> R0.5 <input checked="" type="checkbox"/> R1 <input type="checkbox"/> R <input type="checkbox"/> GRD <input type="checkbox"/> SCALE 25a/y   6.3a/vv   0.4g/vv UNTOL DIMN mm UP TO 6 30 120 300 600 1200 2400 ±0.1 ±0.2 ±0.3 ±0.4 ±0.5 ±0.8 ±1.0 ±1.5	MATAL SH: ROLLED DATE 2007.07.16 INT: SNCM220/SCM415 DWG JANET
	THREAD BALL TRACK APPD MICHELLE HRC 56 ~ 62 PROCESS NO. G	CUSTR H-CHICAGO
	DWG.NO. A114IHA3	

\*BREAK SHARP EDGE UNLESS OTHER SPECIFIED.  
 \*未量倒角者以R0.5MAX  
 ● THREAD END ALLOWS ABOVE LENGTH OUT OF HARDNESS TOLERANCE

2007.07.16	MOD ▲	
DATE	MODIFICATION	APPROVED

\* PLEASE IGNORE CHINESE CHARACTERS WHICH ARE FOR OUR REFERENCE ONLY.