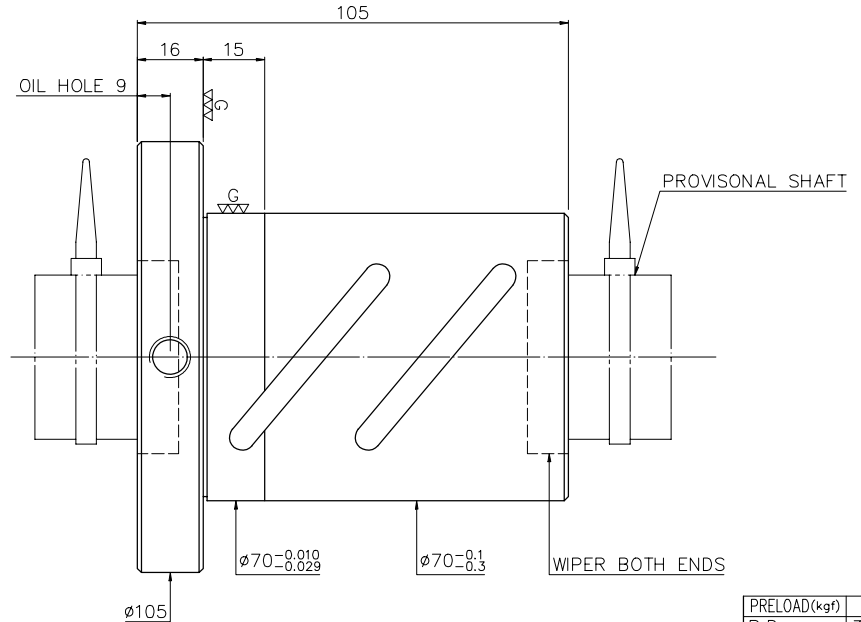
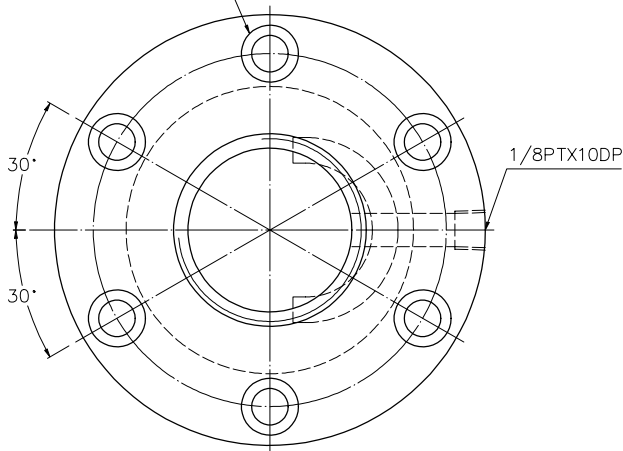


6- $\varnothing 9$ THRU $\varnothing 14 \times 8.5$ DP  
BCD 86



NOTE: 1. Steel ball tolerance must be in the range of  $-0.0025, -0.015$ .

SPEC: 2R40-12.7B2-FSB

MAX. AXIAL LOAD (kgf)	LUBRICATION	PRELOAD (kgf)	~
MAX. ROTATIONAL SPEED (rpm)	SPACE BALL	R.D	36.427
DN VALUE	EI TYPE ASSEMBLY METHOD	S.F (kgf)	~
MAX. FEED RATE (m/min)	CUSTOMER DRAWING NO.	DRAG TORQUE (kgf-cm)	~
ACCELERATION (m/sec <sup>2</sup> )	CUSTOMER MC TYPE	DIRECTION OF TURN	R
SUPPORT METHOD	CUSTOMER AXIAL TYPE	PC DIA.	40.483
		BALL DIA.	3.969
		BACKLASH $\Delta$	0.03MAX
		CIRCUIT	2.5*2
		LEAD ANGLE	5.7
		DYNAMIC (kgf)	2544
		STATIC (kgf)	7967
		LEAD / PITCH	12.7/6.35



UNCHAMFERED USE	<input type="checkbox"/> R0.5	<input checked="" type="checkbox"/> R1	<input type="checkbox"/> R
ROUGH M/C FINI. M/C	25 $\mu$	6.3 $\mu$	0.4 $\mu$
UNTOL. DIMN. mm	GRD. $\frac{G}{6}$		
UP TO	6	30	120
TO	30	120	300
	600	1200	2400
	2400	2400	OVER
	$\pm 0.1$	$\pm 0.2$	$\pm 0.3$
	$\pm 0.4$	$\pm 0.5$	$\pm 0.8$
	$\pm 1.0$	$\pm 1.0$	$\pm 1.5$

SH: ROLLED	DATE	2007.07.16
INT: SNOW220/SOM415	DWG	JANET
THREAD BALL TRACK	APPD	MICHELLE
CUSTR	PROCESS NO.	G

\*BREAK SHARP EDGE UNLESS OTHER SPECIFIED.  
\*未量倒角者以R0.5MAX  
● THREAD END ALLOWS ABOVE LENGTH OUT OF HARDNESS TOLERANCE

E300: ~

HIWIN BALLSCREWS

CUSTR H-CHICAGO  
DWG.NO. A114ZLA2

2007.07.16	MOD. $\Delta$	MICHELLE
DATE	MODIFICATION	APPROVED

\* PLEASE IGNORE CHINESE CHARACTERS WHICH ARE FOR OUR REFERENCE ONLY.